

SECTION 1

LAMP HOLDERS G9:

Art. **A60A** *page 139*

Art. **A66** *page 141*

LAMP HOLDERS GZ10 - GU10:

Art. **A40 - A40B** *page 133*

Art. **A42Z - A42U** *page 137*

LAMP HOLDERS R7s:

Art. **A01** *page 105*

Art. **A10** *page 113*

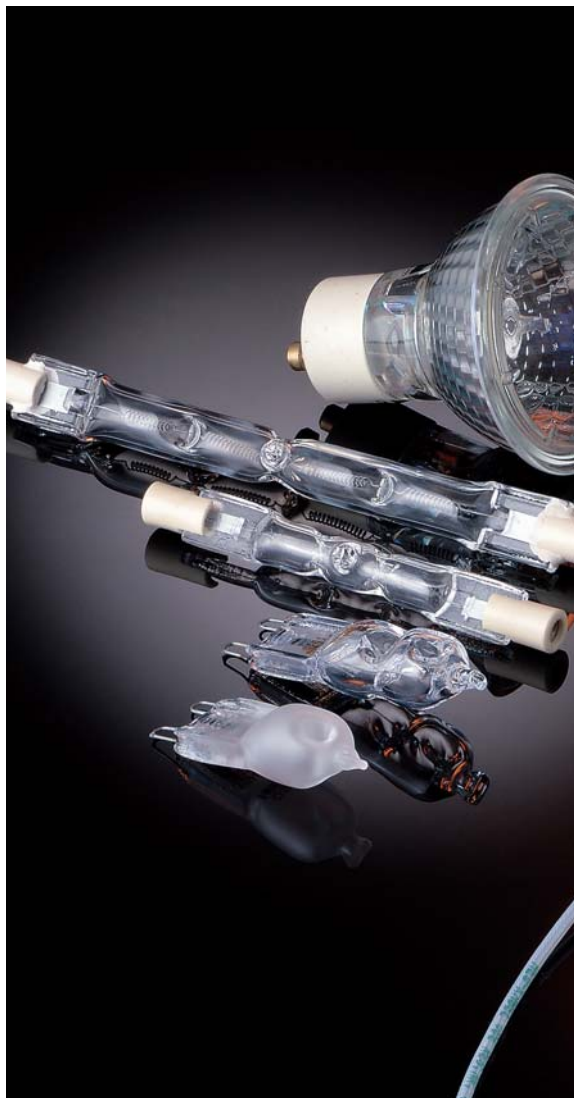
Art. **A20** *page 127*

Art. **A22** *page 129*

Art. **A25** *page 131*

LAMP HOLDERS Gx16d:

Art. **P35** *page 163*



LAMPHOLDERS FOR INCANDESCENT HALOGEN LAMPS FOR NET TENSION 110 - 250V



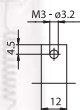
LAMP HOLDERS FOR INCANDESCENT HALOGEN LAMPS

Attention: the back side of this lampholder has uncovered parts under tension. During the project verify that the surface and air distance, prescribed by lighting fixtures construction standards, will be respected. Verify also the protection against accidental contacts.

Note: the version AO1P, lampholder equipped with protection device in LCP, grants the protection against electrical shocks caused by accidental contacts with the back side of the lampholder.

AO1F, lampholder with micarta plate positioned between the contacts and the pressure spring. The insulation plate grants the protection against the electric shock with the standardized IEC 529 test-finger in the contact area lamp-lampholder, with inserted lamp. PATENTED

- Steatite body.
Contacts in electrolytic copper and silver.
Pressure spring in nickel-plated, hardened and normalized, steel.
Self-threading fixing screws M3.
- Weight of the lampholders pair in standard execution (with cables L= 25 cm): 50 g.
- D: fixing distance of the lampholders pair on rigid structures:
 - 54,7 mm for lamps with R7s cap, with "Z nom." lamp 74,9 mm
 - 94,0 mm for lamps with R7s cap, with "Z nom." lamp 114,2 mm
- d: distance between contacts = D + 16,4 mm
- Indications to fix the lampholder on structures.



- Fixing of the lampholders pair by M3 self-threading screws inserted in the bodies. Standard screw M3 x 8 with cross head. Other lengths on request (minimum length for threaded supports: 6 mm).

A01



Lampholder:

Maximum power:
Rated voltage:
Working temperature:
Connected cables working temperature:
In conformity to the standards:

R7s

1500 W
250 V
T 250°C

T 105°± 250°C
UL 496
CSA 22.2 N.43

Approval marks:

cURus

Single-conductor flexible connecting cables, polarized black and white, crimped to the lampholder:

Insulation	T in °C	Conduct.	Available voltages and AWG		
			300V	600V	18AWG
Silicone <i>Single insulation</i>	200	CuSn		•	•
Silicone+glass-braid <i>Single insulation</i>	200	CuSn		•	•
FEP <i>Single insulation</i>	200	CuNi	•	•	•
FEP+FEP <i>Double insulation</i>	200	CuNi	•		•
PTFE <i>Single insulation</i>	250	CuNi	•	•	•
PTFE+PFA <i>Double insulation</i>	250	CuNi	•		•



FOR NET TENSION 110 - 250V

A01

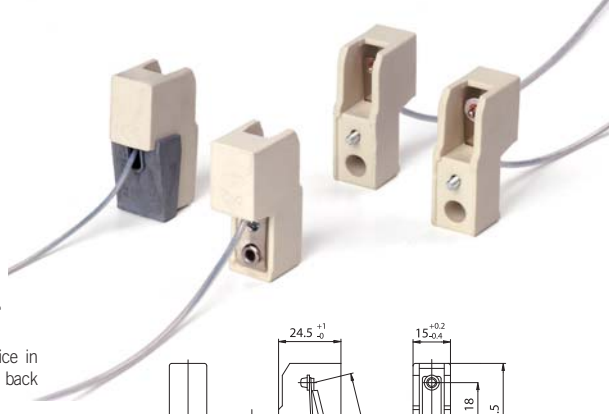
1984-1998



Lampholder:

Rated voltage:
 Rated current:
 Working temperature:
 Connected cables
 working temperature:
 Overvoltage category:
 Protection degree (IP):
 In conformity to the standards:
 In conformity to the requirements
 of the directive:
 Approval marks:

R7s
500 V
6 A
T 300°C
T 105°± 250°C
III
IP00
EN 60838-1
2014/35/EU
ENEC 03 CQC

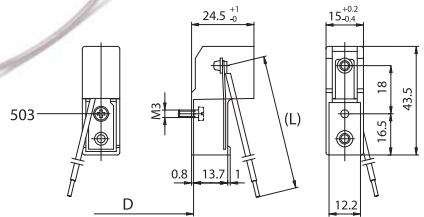


A01P: A01 lampholder equipped with protection device in LCP T250°C (T240°C for UL), which covers the back pressure springs.

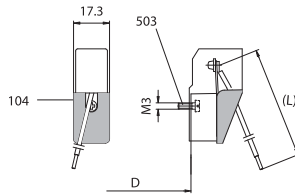
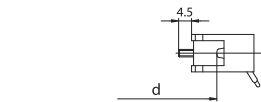
A01F: A01 lampholder with micarta plate positioned between the contacts and the pressure springs.

Single-conductor flexible connecting cables crimped to the lampholder:

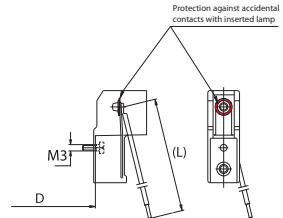
Insulation	T in °C	Conduct.	Available sections in mm²			
			0,50	0,75	1,00	1,50
Silicone <i>Single insulation</i>	180	CuSn	•	•	•	•
Silicone+Silicone <i>Double insulation</i>	180	CuSn		•	•	•
Silicone+glass-braid <i>Single insulation</i>	180	CuSn	•	•	•	•
FEP <i>Single insulation</i>	180	CuSn	•	•	•	•
FEP+FEP <i>Double insulation</i>	180	CuSn	•	•	•	•
FEP+FEP+FEP <i>Triple insulation</i>	180	CuSn	•	•	•	•
PTFE <i>Single insulation</i>	180	CuSn	•	•	•	•
PTFE <i>Single insulation</i>	250	CuNi	•	•	•	•
PTFE+PTFE <i>Double insulation</i>	250	CuNi	•	•		
PTFE+PFA <i>Double insulation</i>	250	CuNi		•	•	
PTFE+PFA+PFA <i>Triple insulation</i>	250	CuNi		•		
PFA <i>Single insulation</i>	260	CuNi	•	•	•	
PFA+PFA <i>Double insulation</i>	260	CuNi	•	•		



A01



A01P



A01F

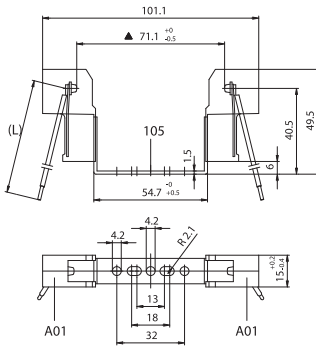
• 503 - Self-threading screw M3 x 8 (other lengths on request)



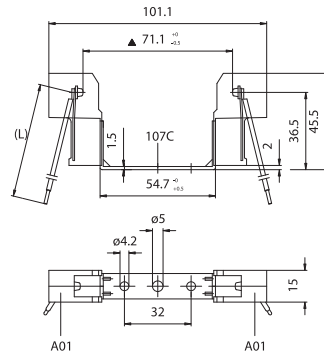
A02



A04C



▲ Dimension without inserted lamp in the lampholder



▲ Dimension without inserted lamp in the lampholder

A02: A01 lampholders assembled with spacer bracket in zinc-plated iron for R7s cap, with "Z nom." lamp 74,9 mm art. 105.

A04C: A01 lampholders assembled with spacer bracket in zinc-plated iron for R7s cap, with "Z nom." lamp 74,9 mm art. 107C.

A02P: version with lampholders equipped with protection in LCP which covers the pressure springs (see A01P).

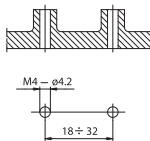
A04CP: version with lampholders equipped with protection in LCP which covers the pressure springs (see A01P).

- Weight of the lampholder in standard execution: 60 g.

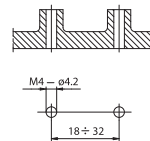
- Weight of the lampholder in standard execution: 60 g.

- Indications to fix the lampholder on structures.

- Indications to fix the lampholder on structures.

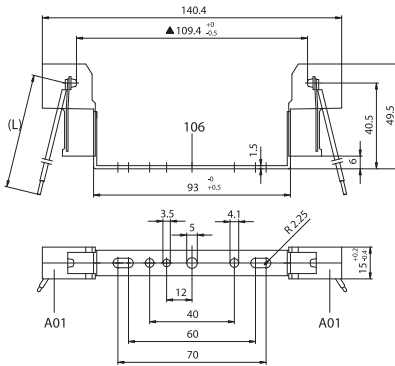


- Fixing of the lampholder by M4 screws to be inserted in the holes of the bracket, placed on two supports with a center distance of 18÷32 mm.



- Fixing of the lampholder by M4 screws to be inserted in the holes of the bracket, placed on two supports with a center distance of 18÷32 mm.

A03

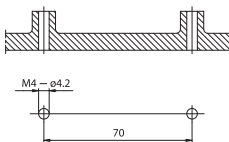


▲ Dimension without inserted lamp in the lampholder

A03: A01 lampholders assembled with spacer bracket in zinc-plated iron for R7s cap, with "Z nom." lamp 114,2 mm art. 106.

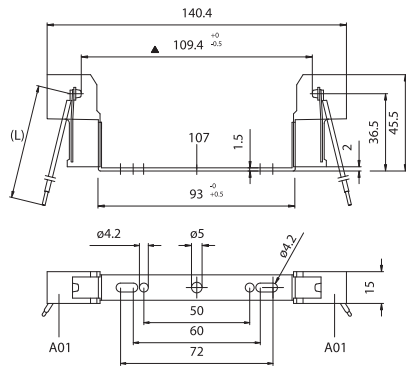
A03P: version with lampholders equipped with protection in LCP which covers the pressure springs (see A01P).

- Weight of the lampholder in standard execution: 65 g.
- Indications to fix the lampholder on structures.



- Fixing of the lampholder by M4 screws to be inserted in the holes of the bracket, placed on two supports with a center distance of 70 mm.

A04

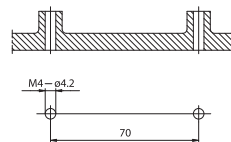


▲ Dimension without inserted lamp in the lampholder

A04: A01 lampholders assembled with spacer bracket in zinc-plated iron for R7s cap, with "Z nom." lamp 114,2 mm art. 107.

A04P: version with lampholders equipped with protection in LCP which covers the pressure springs (see A01P).

- Weight of the lampholder in standard execution: 65 g.
- Indications to fix the lampholder on structures.

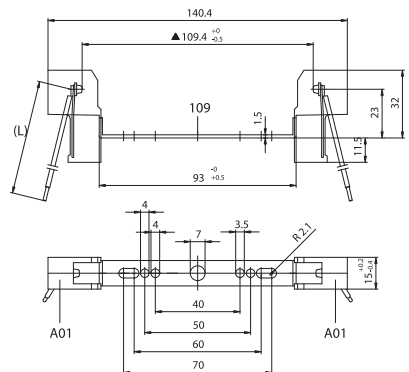
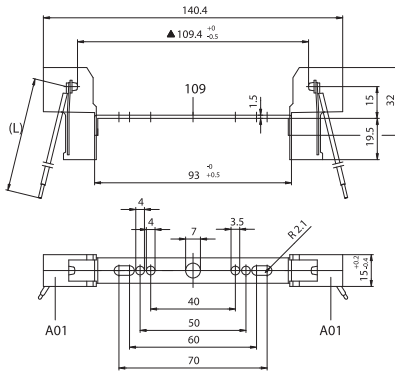


- Fixing of the lampholder by M4 screws to be inserted in the holes of the bracket, placed on two supports with a center distance of 70 mm.

A06



A06U



▲ Dimension without inserted lamp in the lampholder

▲ Dimension without inserted lamp in the lampholder

A06: A01 lampholders assembled with spacer bracket in zinc-plated iron for R7s cap, with "Z nom." lamp 114,2 mm art. 109.

A06U: A01 lampholders assembled with spacer bracket in zinc-plated iron for R7s cap, with "Z nom." lamp 114,2 mm art. 109.

A06P: version with lampholders equipped with protection in LCP which covers the pressure springs (see A01P).

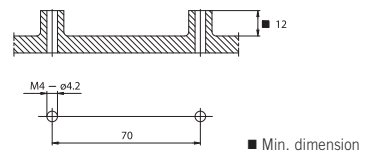
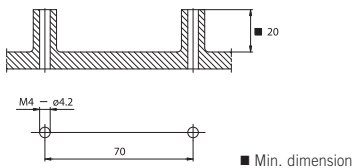
A06UP: version with lampholders equipped with protection in LCP which covers the pressure springs (see A01P).

- Weight of the lampholder in standard execution: 60 g.

- Weight of the lampholder in standard execution: 60 g.

- Indications to fix the lampholder on structures.

- Instructions to fix the lampholder on structures.



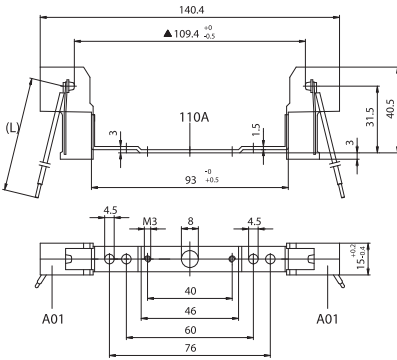
- Fixing of the lampholder by M4 screws to be inserted in the holes of the bracket, placed on two supports with a center distance of 70 mm.

- Fixing of the lampholder by M4 screws to be inserted in the holes of the bracket, placed on two supports with a center distance of 70 mm.

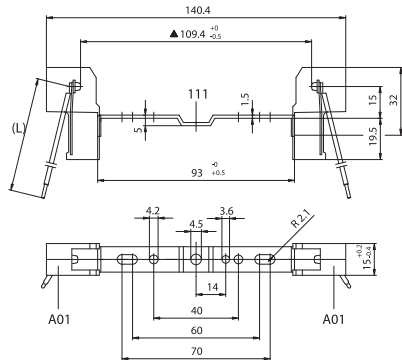
A07



A08



▲ Dimension without inserted lamp in the lampholder



▲ Dimension without inserted lamp in the lampholder

A07: A01 lampholders assembled with spacer bracket in zinc-plated iron for R7s cap, with "Z nom." lamp 114,2 mm art. 110A.

A08: A01 lampholders assembled with spacer bracket in zinc-plated iron for R7s cap, with "Z nom." lamp 114,2 mm art. 111.

A07P: version with lampholders equipped with protection in LCP which covers the pressure springs (see A01P).

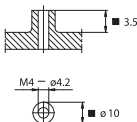
A08P: version with lampholders equipped with protection in LCP which covers the pressure springs (see A01P).

- Weight of the lampholder in standard execution: 65 g.

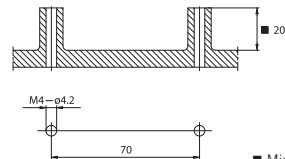
- Weight of the lampholder in standard execution: 60 g.

- Indications to fix the lampholder on structures.

- Indications to fix the lampholder on structures.



■ Min. dimension

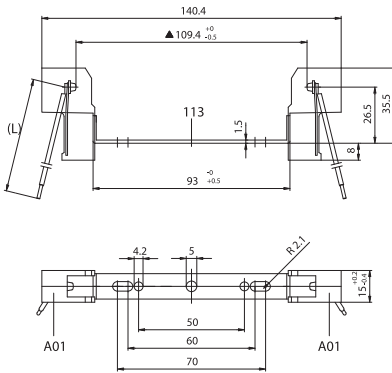


■ Min. dimension

- Fixing of the lampholder by M4 screws (with head with minimum diameter 8 mm) to be inserted in the central hole of the bracket, placed on a support.

- Fixing of the lampholder by M4 screws to be inserted in the holes of the bracket, placed on two supports with a center distance of 70 mm.

A09

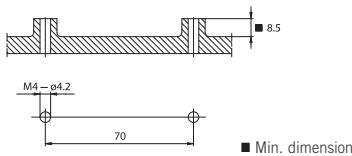


▲ Dimension without inserted lamp in the lampholder

A09: A01 lampholders assembled with spacer bracket in zinc-plated iron for R7s cap, with "Z nom." lamp 114,2 mm art. 113.

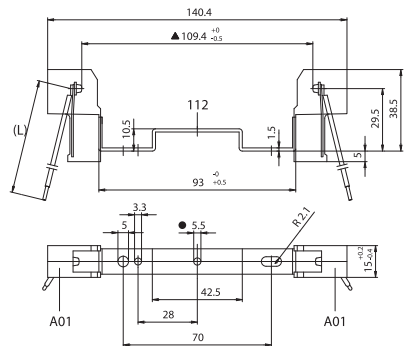
A09P: version with lampholders equipped with protection in LCP which covers the pressure springs (see A01P).

- Weight of the lampholder in standard execution: 60 g.
- Indications to fix the lampholder on structures.



- Fixing of the lampholder by M4 screws to be inserted in the holes of the bracket, placed on two supports with a center distance of 70 mm.

AB8



▲ Dimension without inserted lamp in the lampholder

AB8: A01 lampholders assembled with spacer bracket in zinc-plated iron for R7s cap, with "Z nom." lamp 114,2 mm with central hole diameter 5,5 mm art. 112.

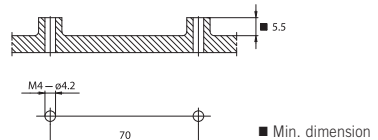
AB8P: version with lampholders equipped with protection in LCP which covers the pressure springs (see A01P).

AB8A - AB8AP: ● with central hole diameter 3,4 mm.

AB8B - AB8BP: ● with central hole M4.

AB8C - AB8CP: ● with central hole diameter 4,5 mm.

- Weight of the lampholder in standard execution: 65 g.
- Indications to fix the lampholder on structures.



- Fixing of the lampholder by M4 screw (with head min. diameter 8 mm) to be inserted in the central fixing hole of the bracket, placed on a support.

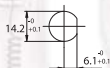
LAMP HOLDERS FOR INCANDESCENT HALOGEN LAMPS

A10

cUR[®]US

Lampholder whose creepage and clearance distances allow the use in class II fixtures with working voltage up to 250V, if connected with double or triple insulated cables (ref. standard EN 60598.1).

- Steatite body.
Nickel-plated brass envelope, diameter 18 mm, with thread M14 x1, length 6 mm.
Contacts in special nickel-plated alloy.
Pressure springs in normalized stainless steel.
Fixing nuts M14 x1, hexagonal 17, in nickel-plated brass.
- Weight of the lampholders pair in standard execution (with cables L= 25 cm): 40 g.
- D: fixing distance of the lampholders pair on rigid structures:
 - 103,4 mm for lamps with R7s cap, with "Z nom." lamp 74,9 mm
 - 142,7 mm for lamps with R7s cap, with "Z nom." lamp 114,2 mm
- d: distance between the contacts = D - 31,1 mm
- Indications to fix the lampholder on structures.



- Fixing of lampholders pair by thread M14 x1 on the lampholder external envelope. The standard supply includes the 17 mm hexagonal nuts in nickel-plated brass M14 x1.
The threaded part of the brass external envelope has a lateral milling, in order to avoid the wrong assembling of the lampholders pair.

Lampholder:

Maximum power:
Rated voltage:
Working temperature:
Connected cables working temperature:
In conformity to the standards:

R7s

1500 W
250 V
T 250°C
T 105°± 250°C
UL 496
CSA 22.2 N.43

Approval marks:

cURus

A10M: the lampholder, in the version cURus, may be supplied with a device that blocks the sliding of the lampholder body connected to the line (black colour polarized cable).

Single-conductor flexible connecting cables, polarized black and white, crimped to the lampholder:

Insulation	T in °C	Conduct.	Available voltages and AWG		
			300V	600V	18AWG
Silicone <i>Single insulation</i>	200	CuSn		•	•
Silicone+glass-braid <i>Single insulation</i>	200	CuSn		•	•
FEP <i>Single insulation</i>	200	CuNi	•	•	•
FEP+FEP <i>Double insulation</i>	200	CuNi	•		•
PTFE <i>Single insulation</i>	250	CuNi	•	•	•
PTFE+PFA <i>Double insulation</i>	250	CuNi	•		•



FOR NET TENSION 110 - 250V

A10

1984



Lampholder:

Rated voltage:
Rated current:
Working temperature:
Connected cables
working temperature:
Overvoltage category:
Protection degree (IP):
In conformity to the standards:
In conformity to the requirements
of the directive:

R7s
250 V
6 A
T 300°C
T 105°± 250°C
III
IP20
EN 60838-1
2014/35/EU

Approval marks:

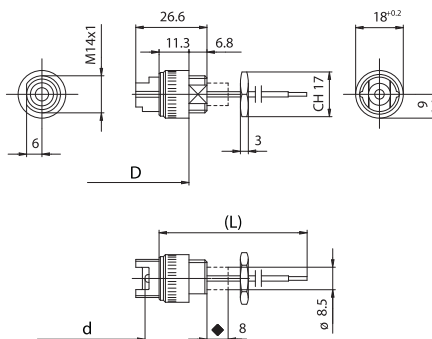
ENEC 03
CQC



Double insulation

Single-conductor flexible connecting cables
crimped to the lampholder:

Insulation	T in °C	Conduct.	Available sections in mm ²			
			0,50	0,75	1,00	1,50
Silicone <i>Single insulation</i>	180	CuSn	•	•	•	•
Silicone+Silicone <i>Double insulation</i>	180	CuSn		•	•	
Silicone+glass-braid <i>Single insulation</i>	180	CuSn	•	•	•	•
FEP <i>Single insulation</i>	180	CuSn	•	•	•	•
FEP+FEP <i>Double insulation</i>	180	CuSn	•	•	•	•
FEP+FEP+FEP <i>Triple insulation</i>	180	CuSn	•	•		
PTFE <i>Single insulation</i>	180	CuSn	•	•	•	•
PTFE <i>Single insulation</i>	250	CuNi	•	•	•	•
PTFE+PTFE <i>Double insulation</i>	250	CuNi	•	•	•	
PTFE+PFA <i>Double insulation</i>	250	CuNi		•	•	
PTFE+PFA+PFA <i>Triple insulation</i>	250	CuNi		•		
PFA <i>Single insulation</i>	260	CuNi	•	•	•	
PFA+PFA <i>Double insulation</i>	260	CuNi	•	•	•	



♦ Maximum jut of the steatite body during lamp insertion



A10G



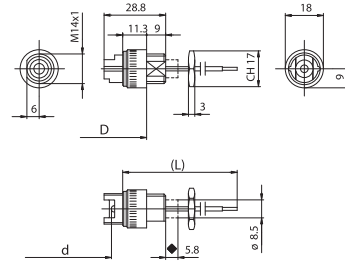
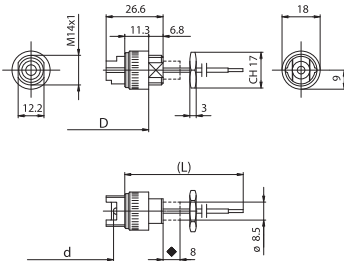
A10L



Double insulation



Double insulation



◆ Maximum jut of the steatite body during lamp insertion

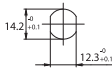
◆ Maximum jut of the steatite body during lamp insertion

A10G: lampholder as A10 with nickel-plated brass envelope diameter 18 mm with M14 x1 threading with two parallel millings, length 6 mm.

ATTENTION: the brass envelope, in its threaded part, has a double lateral milling that may cause the wrong assembling of the lampholders pairs.

A10GM: version UR, with device that blocks the lampholder body connected to the line (see A10M).

- D: fixing distance of the lampholders pairs on rigid structures:
 - 103,4 mm for lamps with R7s caps, with "Z nom." lamp 74,9 mm
 - 142,7 mm for lamps with R7s cap, with "Z nom." lamp 114,2 mm
- Weight of the lampholders pair in standard execution: 40 g.
- Indications to fix the lampholder on structures.

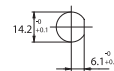


- Fixing of lampholders pair by thread M14 x1 on the lampholder external envelope. The standard supply includes the 17 mm hexagonal nuts in nickel-plated brass M14 x1.

A10L: lampholder as A10 with nickel-plated brass envelope diameter 18 mm with M14 x1 threading, length 9 mm.

A10LM: version UR, with device that blocks the lampholder body connected to the line (see A10M).

- D: fixing distance of the lampholders pairs on rigid structures:
 - 103,4 mm for lamps with R7s caps, with "Z nom." lamp 74,9 mm
 - 142,7 mm for lamps with R7s cap, with "Z nom." lamp 114,2 mm
- Weight of the lampholders pair in standard execution: 40 g.
- Indications to fix the lampholder on structures.



- Fixing of lampholders pair by thread M14 x1 on the lampholder external envelope. The standard supply includes the 17 mm hexagonal nuts in nickel-plated brass M14 x1. The threaded part of the brass external envelope has a lateral milling, in order to avoid the wrong assembling of the lampholders pair.

A10F



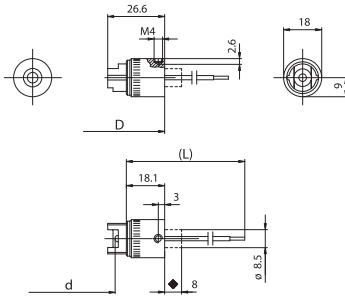
A10A



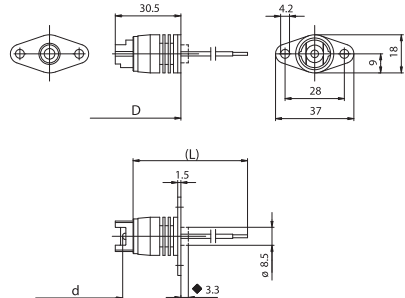
Double insulation



Double insulation



◆ Maximum jut of the steatite body during lamp insertion

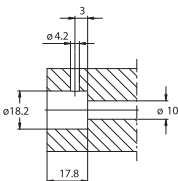


◆ Maximum jut of the steatite body during lamp insertion

A10F: lampholder as A10 with nickel-plated brass envelope with M4 lateral threading.

A10FM: version UR, with device that blocks the lampholder body connected to the line (see A10M).

- D: fixing distance of the lampholders pairs on rigid structures:
 - 117,0 mm for lamps with R7s cap, with "Z nom." lamp 74,9 mm
 - 156,3 mm for lamps with R7s cap, with "Z nom." lamp 114,2 mm
- Weight of the lampholders pair in standard execution: 45 g.
- Indications to fix the lampholder on structures.

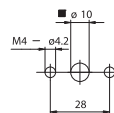


- Fixing system, of the lampholders pair, by insertion in cylindrical structures diameter 18,2 mm, in which the lampholders stability is granted screwing down M4 screws in fore-made threads of the envelope holes (see the drawing).

A10A: lampholder as A10 with nickel-plated brass envelope with nickel-plated fixing plate.

A10AM: version UR, with device that blocks the lampholder body connected to the line (see A10M).

- D: fixing distance of the lampholders pairs on rigid structures:
 - 125,7 mm for lamps with R7s cap, with "Z nom." lamp 74,9 mm
 - 165,0 mm for lamps with R7s cap, with "Z nom." lamp 114,2 mm
- Indications to fix the lampholder on structures.



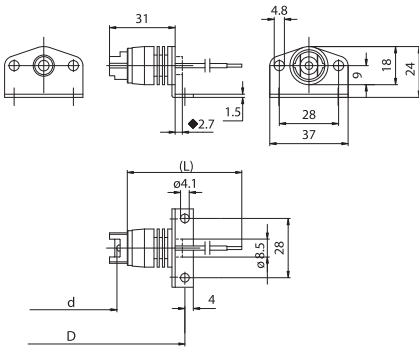
■ Insertion hole of the steatite body during lamp insertion

- Fixing of the lampholders pair by M4 screws to be inserted in holes with center distance 28 mm.

A10B



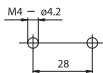
Double insulation



◆ Maximum jut of the steatite body during lamp insertion

A10B: lampholder as A10 with nickel-plated fixing bracket turned towards the cables.

- D: fixing distance of the lampholders pairs on rigid structures:
 - 134,9 mm for lamps with R7s cap, with "Z nom." lamp 74,9 mm
 - 174,2 mm for lamps with cap R7s, with "Z nom." lamp 114,2 mm
- Weight of the lampholders pair in standard execution: 65 g.
- Indications to fix the lampholder on structures.

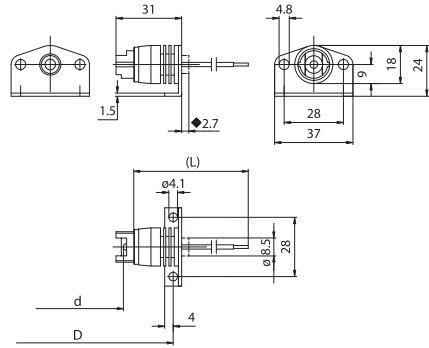


- Fixing of the lampholders pair by M4 screws to be inserted in holes with center distance 28 mm.

A10C



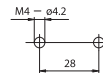
Double insulation



◆ Maximum jut of the steatite body during lamp insertion

A10C: lampholder as A10 with nickel-plated fixing bracket turned towards the lamp.

- D: fixing distance of the lampholders pairs on rigid structures:
 - 113,7 for lamps with R7s cap, with "Z nom." lamp 74,9 mm
 - 173,2 mm for lamps with cap R7s, with "Z nom." lamp 114,2 mm
- Weight of the lampholders pair in standard execution: 65 g.
- Indications to fix the lampholder on structures.



- Fixing of the lampholders pair by M4 screws to be inserted in holes with center distance 28 mm.

A10Q



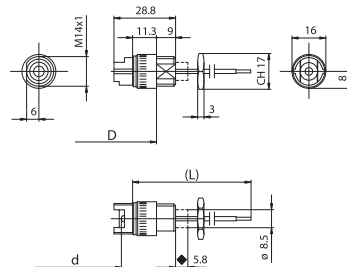
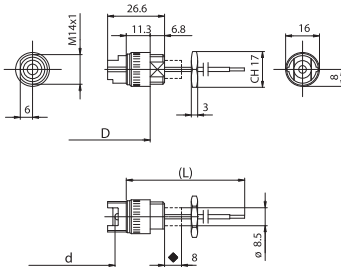
A10V



Double insulation



Double insulation



◆ Maximum jut of the steatite body during lamp insertion

◆ Maximum jut of the steatite body during lamp insertion

A10Q: lampholder as A10 with nickel-plated brass envelope diameter 16 mm, with M14 x1 thread, length 6 mm.

A10V: lampholder as A10 with nickel-plated brass envelope diameter 16 mm, with M14 x1 thread, length 9 mm.

A10QM: version UR, with device that blocks the lampholder body connected to the line (see A10M).

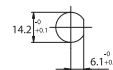
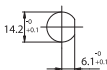
A10VM: version UR, with device that blocks the lampholder body connected to the line (see A10M).

- D: fixing distance of the lampholders pairs on rigid structures:
 - 103,4 mm for lamps with R7s cap, with "Z nom." lamp 74,9 mm
 - 142,7 mm for lamps with R7s cap, with "Z nom." lamp 114,2 mm

- D: fixing distance of the lampholders pairs on rigid structures:
 - 103,4 mm for lamps with R7s cap, with "Z nom." lamp 74,9 mm
 - 142,7 mm for lamps with R7s cap, with "Z nom." lamp 114,2 mm

- Weight of the lampholders pair in standard execution: 30 g.
- Indications to fix the lampholder on structures.

- Weight of the lampholders pair in standard execution: 30 g.
- Indications to fix the lampholder on structures.



- Fixing of lampholders pair by thread M14 x1 on the lampholder external envelope. The standard supply includes the 17 mm hexagonal nuts in nickel-plated brass M14 x1. The threaded part of the brass external envelope has a lateral milling, in order to avoid the wrong assembling of the lampholders pair.

- Fixing of lampholders pair by thread M14 x1 on the lampholder external envelope. The standard supply includes the 17 mm hexagonal nuts in nickel-plated brass M14 x1. The threaded part of the brass external envelope has a lateral milling, in order to avoid the wrong assembling of the lampholders pair.

A10E



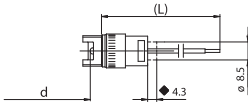
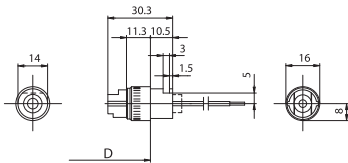
A12



Double insulation



Double insulation

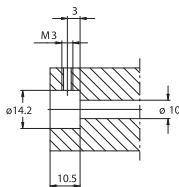


◆ Maximum jut of the steatite body during lamp insertion

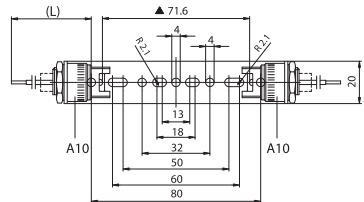
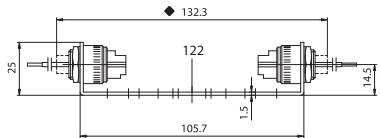
A10E: lampholder as A10, with nickel-plated brass envelope diameter 16 mm and reference plane for the fastening.

A10EM: version UR with device that blocks the lampholder body connected to the line (see A10M).

- D: fixing distance of the lampholders pairs on rigid structures:
 - 103,4 mm for lamps with R7s cap, with "Z nom." lamp 74,9 mm
 - 142,7mm for lamps with R7s cap, with "Z nom." lamp 114,2 mm
- Weight of the lampholders pair in standard execution: 30 g.
- Indications to fix the lampholder on structures.



- Fixing system of the lampholders pair by insertion in holes diameter 14,2 mm, in which lampholder stability is guaranteed screwing the M3 screws in the fore-made threads on the envelope holes (see the drawing).

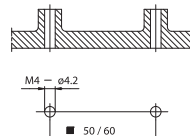


▲ Dimension without inserted lamp in the lampholder
◆ Maximum jut of the steatite body during lamp insertion

A12: A10 lampholders assembled with spacer bracket in zinc-plated iron for lamps with R7s cap with "Z nom." lamp 74,9 mm art. 122.

A12M: version UR and CSA, with device that blocks the lampholder body connected to the line (see A10M).

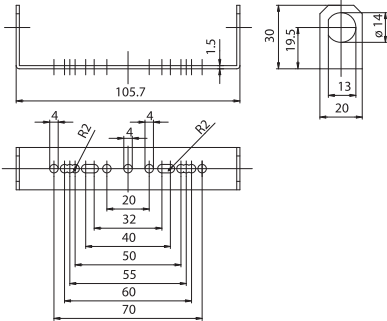
- Weight of the lampholder in standard execution: 65 g.
- Indications to fix the lampholder on structures.



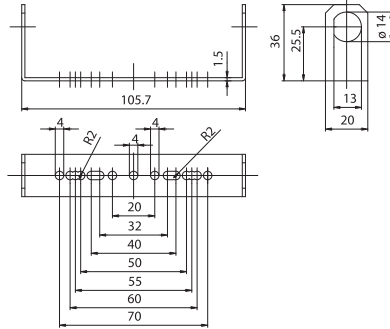
■ Dimension for supported lampholder. When lampholder is placed on a plane, it is possible to use all the bracket holes.

- Fixing of the lampholder by M4 screws to be inserted in the holes of the bracket, placed on a plane surface on two supports with a center distance of 50 - 60 mm.

197



198



197: bracket in zinc-plated iron 30 mm high, for lampholders of the A10 series, for R7s lamps with "Z nom." lamp 74,9 mm.

- Weight: 30 g.

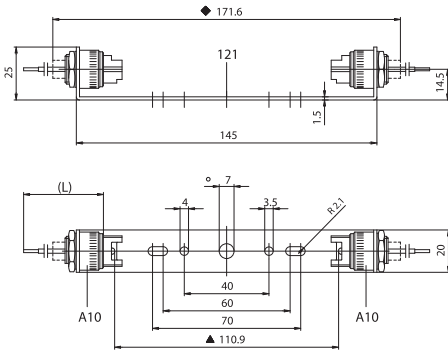
198: bracket in zinc-plated iron 36 mm high, for lampholders of the A10 series, for R7s lamps with "Z nom." lamp 74,9 mm.

- Weight: 30 g.

A11



Double insulation



- ▲ Dimension without inserted lamp in the lampholder
- ◆ Maximum jut of the steatite body during lamp insertion

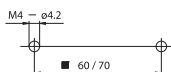
A11: A10 lampholders assembled with spacer bracket in zinc-plated iron for lamps with R7s cap with "Z nom." lamp 114,2 mm with central hole diameter 7 mm art.121.

A11G: with central hole diameter 11 mm.

A11P: with central hole diameter 4,5 mm.

A11M - A11GM - A11PM: version UR and CSA, with device that blocks the lampholder body connected to the line (see A10M).

- Weight of the lampholder in standard execution: 75 g.
- Indications to fix the lampholder on structures.



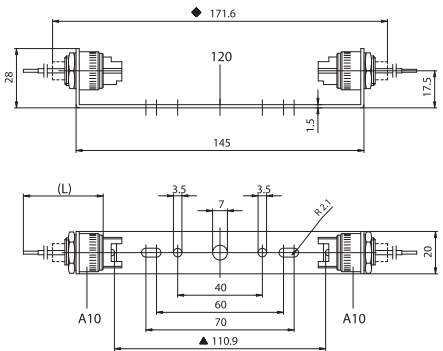
- Dimension for supported lampholder. When lampholder is placed on a plane, it is possible to use all the bracket holes.

- Fixing of the lampholder by M4 screws to be inserted in the holes of the bracket, placed on a plane surface on two supports with a center distance of 60 - 70 mm.

A13



Double insulation

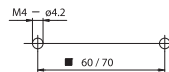


- ▲ Dimension without inserted lamp in the lampholder
- ◆ Maximum jut of the steatite body during lamp insertion

A13: A10 lampholders assembled with spacer bracket in zinc-plated iron for lamps with R7s cap with "Z nom." lamp 114,2 mm with central hole diameter 7 mm art. 120.

A13M: version UR, with device that blocks the lampholder body connected to the line (see A10M).

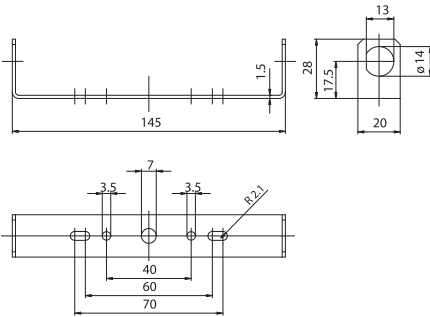
- Weight of the lampholder in standard execution: 75 g.
- Indications to fix the lampholder on structures.



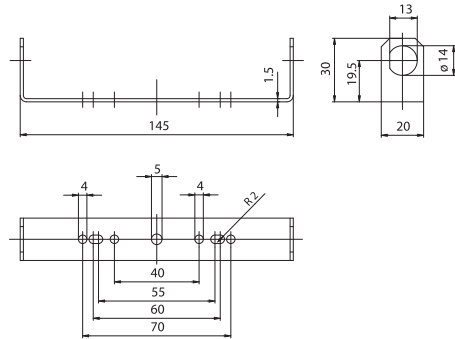
- Dimension for supported lampholder. When lampholder is placed on a plane, it is possible to use all the bracket holes.

- Fixing of the lampholder by M4 screws to be inserted in the holes of the bracket, placed on a plane surface on two supports with a center distance of 60 - 70 mm.

120



189



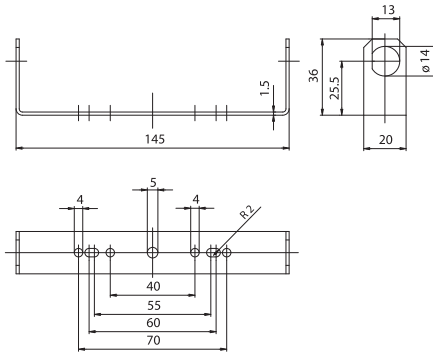
120: bracket in zinc-plated iron 28 mm high, for lampholders of the A10 series, for R7s lamps with "Z nom." lamp 114,2 mm.

- Weight: 40 g.

189: bracket in zinc-plated iron 30 mm high, for lampholders of the A10 series, for R7s lamps with "Z nom." lamp 114,2 mm.

- Weight: 30 g.

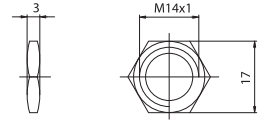
196



196: bracket in zinc-plated iron, 36 mm high, for lampholders of the A10 series, for R7s lamps with "Z nom." lamp 114,2 mm.

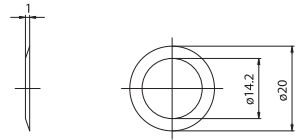
- Weight: 40 g.

119



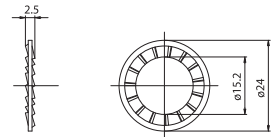
119: nut in nickel-plated brass, with threaded hole M14 x1, hexagonal 17 mm, thickness 3 mm, with double beveling.

123



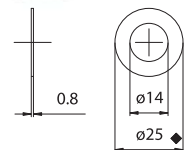
123: steel compensation washer, for lampholders of A10 series, to be used in fixing devices with conical bearing (for instance lampholders bearing forks of die-cast pieces).

142



142: tab washer in zinc-plated steel, for lampholders of A10 series (to be used as tighten guarantee for the eventual ground).

1099-



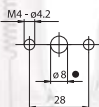
1099: washer in nickel-plated iron, diameter 25 mm, 0,8 mm thickness, for lampholders of A10 series, to be used as rear cover of the protection glasses.

1099/30: ♦ washer diameter 30 mm.

LAMPHOLDERS FOR INCANDESCENT HALOGEN LAMPS

- **Current carrying capacity of cables:**
 - 6A for cables of section until 0,75 mm²
 - 8A for cables of section from 1,00 mm²

- Steatite body.
Aluminium envelope.
Contacts in special nickel-plated alloy.
Springs in normalized stainless steel.
Cable-guide bush in steatite.
- Weight of the lampholders pair in standard execution
(with cables L = 25 cm): 30 g.
- D: fixing distance of the lampholders pairs on rigid structures:
 - 125,7 mm for lamps with R7s cap with "Z nom." lamp 74,9 mm
 - 165,0 mm for lamps with R7s cap with "Z nom." lamp 114,2 mm
 - 236,5 mm for lamps with R7s cap, with "Z nom." lamp 185,7 mm
 - 301,5 mm for lamps with R7s cap, with "Z nom." lamp 250,7 mm
- d: distance between contacts = D - 53,4 mm
- Indications to fix the lampholder on structures.



- Hole for the cable passage

- Fixing of the lampholders pair by M4 screws to be inserted in the holes at center distance 28 mm.

FOR NET TENSION 110 - 250V

A20

1984



Lampholder:

Rated voltage:
Rated current:
Working temperature:
Connected cables
working temperature:
Overvoltage category:
Protection degree (IP):
In conformity to the standards:
In conformity to the requirements
of the directive:

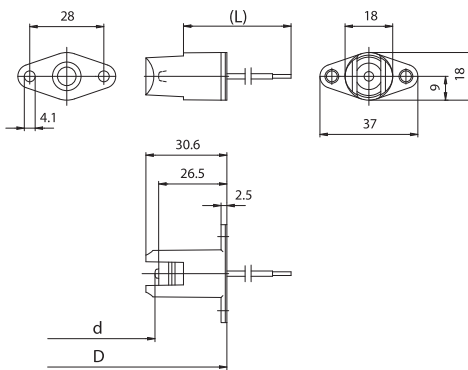
Approval marks:

R7s
500 V
8 A
T 300°C
T 105°± 250°C
III
IP20
EN 60838-1
2014/35/EU
ENEC 03



Single-conductor flexible connecting cables
crimped to the lampholder:

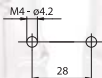
Insulation	T in °C	Conduct.	Available sections in mm ²			
			0,50	0,75	1,00	1,50
Silicone <i>Single insulation</i>	180	CuSn	•	•	•	•
Silicone+Silicone <i>Double insulation</i>	180	CuSn		•	•	•
Silicone+glass-braid <i>Single insulation</i>	180	CuSn	•	•	•	•
FEP <i>Single insulation</i>	180	CuSn	•	•	•	•
FEP+FEP <i>Double insulation</i>	180	CuSn	•	•	•	•
FEP+FEP+FEP <i>Triple insulation</i>	180	CuSn	•	•	•	•
PTFE <i>Single insulation</i>	180	CuSn	•	•	•	•
PTFE <i>Single insulation</i>	250	CuNi	•	•	•	•
PTFE+PTFE <i>Double insulation</i>	250	CuNi	•	•	•	
PTFE+PFA <i>Double insulation</i>	250	CuNi		•	•	
PTFE+PFA+PFA <i>Triple insulation</i>	250	CuNi		•		
PFA <i>Single insulation</i>	260	CuNi	•	•	•	
PFA+PFA <i>Double insulation</i>	260	CuNi	•	•		



LAMPHOLDERS FOR INCANDESCENT HALOGEN LAMPS

- **Current carrying capacity of cables:**
 - 6A for cables of section until 0,75 mm²
 - 8A for cables of section from 1,00 mm²

- Steatite body.
Aluminium envelope.
Contacts in special nickel-plated alloy.
Springs in normalized stainless steel.
Cable-guide bush in steatite.
Fixing bracket in zinc-plated iron.
- Weight of the lampholders pair in standard execution
(with cables L= 25 cm): 30 g.
- D: fixing distance of the lampholders pairs on rigid structures:
 - 132,7 mm for lamps with R7s cap with "Z nom." lamp
74,9 mm
 - 172,0 mm for lamps with R7s cap with "Z nom." lamp
114,2 mm
 - 243,5 mm for lamps with R7s cap, with "Z nom." lamp
185,7 mm
 - 308,5 mm for lamps with R7s cap, with "Z nom." lamp
250,7 mm
- d: distance between contacts = D - 60,4 mm
- Indications to fix the lampholder on structures.



- Fixing of the lampholders pair by M4 screws to be inserted in the holes at center distance 28 mm.



FOR NET TENSION 110 - 250V

A22

1984



Lampholder:

Rated voltage:
 Rated current:
 Working temperature:
 Connected cables
 working temperature:
 Overvoltage category:
 Protection degree (IP):
 In conformity to the standards:
 In conformity to the requirements
 of the directive:

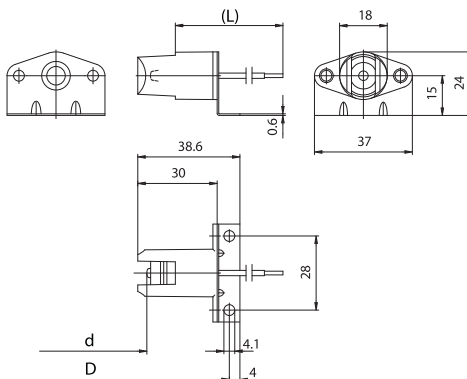
R7s
500 V
8 A
T 300°C
T 105°± 250°C
III
IP20
EN 60838-1
2014/35/EU
ENEC 03

Approval marks:



Single-conductor flexible connecting cables
 crimped to the lampholder:

Insulation	T in °C	Conduct.	Available sections in mm ²			
			0,50	0,75	1,00	1,50
Silicone <i>Single insulation</i>	180	CuSn	•	•	•	•
Silicone+Silicone <i>Double insulation</i>	180	CuSn		•	•	•
Silicone+glass-braid <i>Single insulation</i>	180	CuSn	•	•	•	•
FEP <i>Single insulation</i>	180	CuSn	•	•	•	•
FEP+FEP <i>Double insulation</i>	180	CuSn	•	•	•	•
FEP+FEP+FEP <i>Triple insulation</i>	180	CuSn	•	•	•	•
PTFE <i>Single insulation</i>	180	CuSn	•	•	•	•
PTFE <i>Single insulation</i>	250	CuNi	•	•	•	•
PTFE+PTFE <i>Double insulation</i>	250	CuNi	•	•	•	
PTFE+PFA <i>Double insulation</i>	250	CuNi		•	•	
PTFE+PFA+PFA <i>Triple insulation</i>	250	CuNi		•		
PFA <i>Single insulation</i>	260	CuNi	•	•	•	
PFA+PFA <i>Double insulation</i>	260	CuNi	•	•		



LAMP HOLDERS FOR INCANDESCENT HALOGEN LAMPS

A25

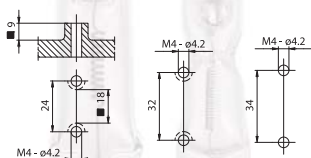


Lampholder whose creepage and clearance distances allow the use in class II fixtures with working voltage up to 250V, if connected with double or triple insulated cables (ref. standard EN 60598.1).

- Steatite body.
Aluminium envelope.
Contacts in special nickel-plated alloy.
Springs in normalized stainless steel.
- Weight of the lampholders pair in standard execution (with cables L= 25 cm): 25 g.
- D: fixing distance of the lampholders pairs on rigid structures:

D	"Z nom." lamp 74,9 mm	"Z nom." lamp 114,2 mm	"Z nom." lamp 185,7 mm
D (A)	89,2	128,5	200,0
D (B)	100,0	139,3	210,8
D (C)	110,2	149,5	221,0
d=	71,4	110,7	182,2

- Indications to fix the lampholder on structures.



■ Min. dimension

- Fixing of the lampholders pair by M4 screws to be inserted in the chosen fixing holes (with max. head diameter of 7 mm, only if holes with center distance 24 mm are used).

Lampholder:

Maximum power:
Rated voltage:
Working temperature:
Connected cables
working temperature:
In conformity to the standards:

R7s

1500 W
250 V
T 250°C
T 105± 250°C
UL 496
CSA 22.2 N.43

Approval marks:

cURus

Single-conductor flexible connecting cables, polarized black and white, crimped to the lampholder:

Insulation	T in °C	Conduct.	Available voltages and AWG		
			300V	600V	18AWG
Silicone <i>Single insulation</i>	200	CuSn	•	•	•
Silicone+glass-braid <i>Single insulation</i>	200	CuSn	•	•	•
FEP <i>Single insulation</i>	200	CuNi	•	•	•
FEP+FEP <i>Double insulation</i>	200	CuNi	•	•	•
PTFE <i>Single insulation</i>	250	CuNi	•	•	•
PTFE+PFA <i>Double insulation</i>	250	CuNi	•	•	•



FOR NET TENSION 110 - 250V

A25

1987

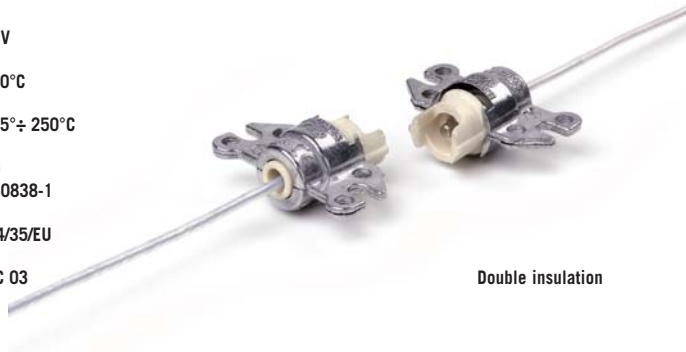


Lampholder:

Rated voltage:
Rated current:
Working temperature:
Connected cables
working temperature:
Overvoltage category:
Protection degree (IP):
In conformity to the standards:
In conformity to the requirements
of the directive:

R7s
250 V
6 A
T 300°C
T 105°± 250°C
III
IP20
EN 60838-1
2014/35/EU
ENEC 03

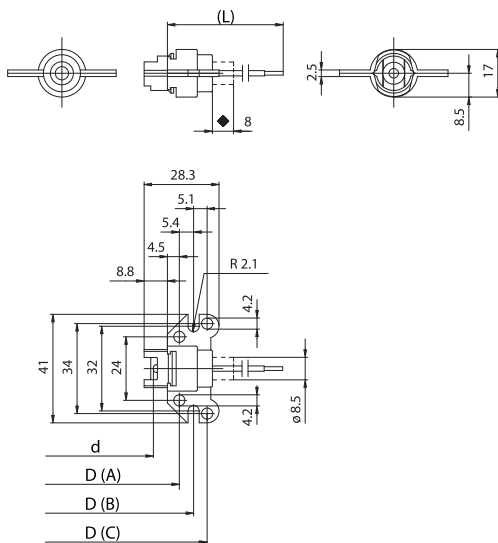
Approval marks:



Double insulation

Single-conductor flexible connecting cables
crimped to the lampholder:

Insulation	T in °C	Conduct.	Available sections in mm ²			
			0,50	0,75	1,00	1,50
Silicone <i>Single insulation</i>	180	CuSn	•	•	•	•
Silicone+Silicone <i>Double insulation</i>	180	CuSn		•	•	
Silicone+glass-braid <i>Single insulation</i>	180	CuSn	•	•	•	•
FEP <i>Single insulation</i>	180	CuSn	•	•	•	•
FEP+FEP <i>Double insulation</i>	180	CuSn	•	•	•	•
FEP+FEP+FEP <i>Triple insulation</i>	180	CuSn	•	•		
PTFE <i>Single insulation</i>	180	CuSn	•	•	•	•
PTFE <i>Single insulation</i>	250	CuNi	•	•	•	•
PTFE+PTFE <i>Double insulation</i>	250	CuNi	•	•	•	
PTFE+PFA <i>Double insulation</i>	250	CuNi		•	•	
PTFE+PFA+PFA <i>Triple insulation</i>	250	CuNi		•		
PFA <i>Single insulation</i>	260	CuNi	•	•	•	
PFA+PFA <i>Double insulation</i>	260	CuNi	•	•	•	



♦ Maximum jut of the steatite body during lamp insertion



LAMP HOLDERS FOR INCANDESCENT HALOGEN LAMPS

A40-



Lampholder whose creepage and clearance distances allow the use in class II fixtures with working voltage up to 250V, if connected with double or triple insulated cables (ref. standard EN 60598.1).

- Steatite body.
Contacts in special alloy.
Springs in normalized stainless steel.
- Weight of the lampholder in standard execution (with cables L = 25 cm): 15 g.

Lampholder:

Rated voltage:
Rated current:
Working temperature:
Connected cables
working temperature:
In conformity to the standards:

GZ10 (art. A40) for lamp with dichroic reflector
GU10 (art. A40B) for lamp with aluminium reflector

250 V
2 A
T 250°C

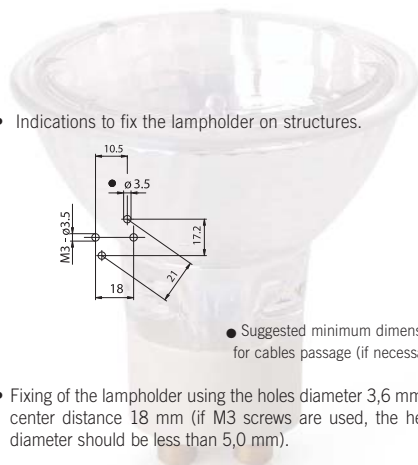
T 105° ± 250°C
UL 496
CSA 22.2 N.43 (for A40B)

Approval marks:

cURus

Single-conductor flexible connecting cables crimped to the lampholder:

Insulation	T _{in} °C	Conduct.	Available voltages and AWG		
			300V	600V	18AWG
Silicone <i>Single insulation</i>	200	CuSn		•	•
Silicone+glass-braid <i>Single insulation</i>	200	CuSn		•	•
FEP <i>Single insulation</i>	200	CuNi	•	•	•
FEP+FEP <i>Double insulation</i>	200	CuNi	•		•
PTFE <i>Single insulation</i>	250	CuNi	•	•	•
PTFE+PFA <i>Double insulation</i>	250	CuNi	•		•



- Indications to fix the lampholder on structures.

● Suggested minimum dimension for cables passage (if necessary)

- Fixing of the lampholder using the holes diameter 3,6 mm at center distance 18 mm (if M3 screws are used, the head diameter should be less than 5,0 mm).



FOR NET TENSION 110 - 250V

A40-

1997



Lampholder:

GZ10 (art. A40) for lamp with dichroic reflector

GU10 (art. A40B) for lamp with aluminium reflector

Rated voltage:
Rated current:
Working temperature:
Connected cables
working temperature:
Overvoltage category:
Protection degree (IP):
In conformity to the standards:
In conformity to the requirements
of the directive:

250 V
2 A
T 300°C

T 105± 250°C
III
IP20
EN 60838-1

2014/35/EU

Approval marks:

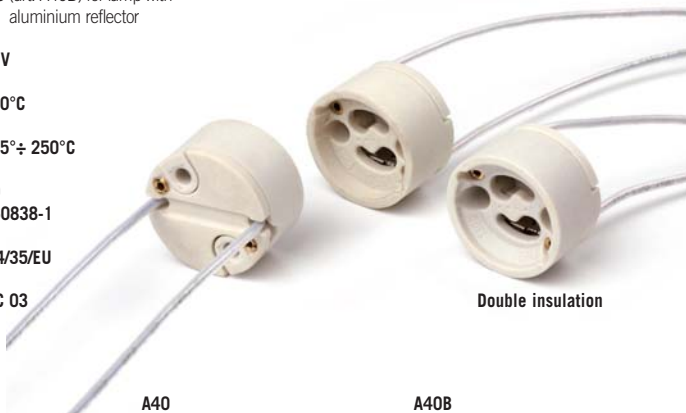
ENEC 03
CQC

A40: lampholder GZ10

A40B: lampholder GU10

Single-conductor flexible connecting cables
crimped to the lampholder:

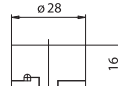
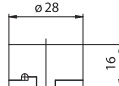
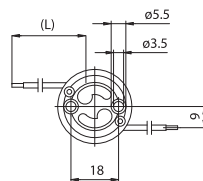
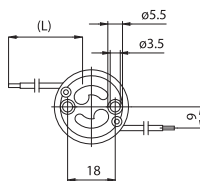
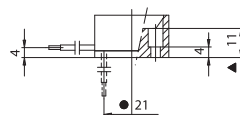
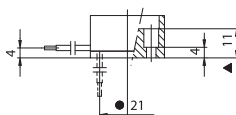
Insulation	T, in °C	Conduct.	Available sections in mm ²			
			0,50	0,75	1,00	1,50
Silicone <i>Single insulation</i>	180	CuSn	•	•	•	
Silicone+glass-braid <i>Single insulation</i>	180	CuSn	•	•		
FEP <i>Single insulation</i>	180	CuSn	•	•	•	
FEP+FEP <i>Double insulation</i>	180	CuSn	•	•		
FEP+FEP+FEP <i>Triple insulation</i>	180	CuSn	•			
PTFE <i>Single insulation</i>	180	CuSn	•	•	•	
PTFE <i>Single insulation</i>	250	CuNi	•	•	•	
PTFE+PTFE <i>Double insulation</i>	250	CuNi	•	•		
PTFE+PFA <i>Double insulation</i>	250	CuNi			•	
PTFE+PFA+PFA <i>Triple insulation</i>	250	CuNi			•	
PFA <i>Single insulation</i>	260	CuNi	•	•	•	
PFA+PFA <i>Double insulation</i>	260	CuNi	•	•		



Double insulation

A40

A40B



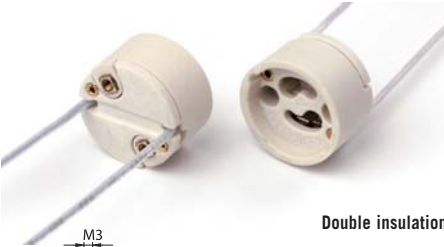
- ▲ Reference plane
- Suggested minimum dimension for cables passage (if necessary)



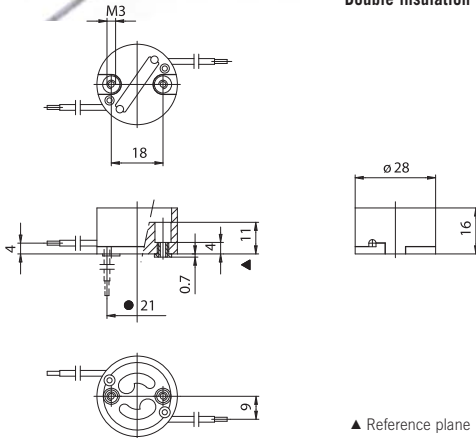
A40-F



A40-H



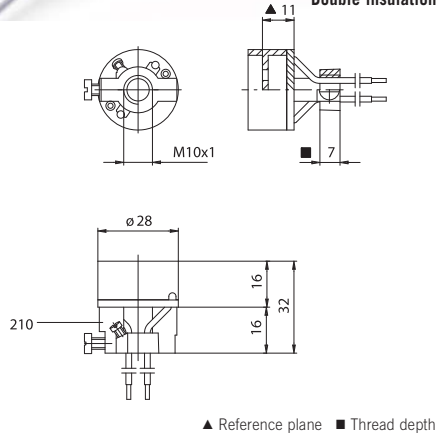
Double insulation



▲ Reference plane



Double insulation



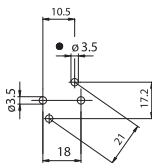
▲ Reference plane ■ Thread depth

A40-F: lampholder A40 - A40B assembled with M3 threaded bushes inserted in the fixing holes at 18 mm center distance (useful for the easy back-fixing of the piece).

- Weight of the lampholder in standard execution: 15 g.
- Indications to fix the lampholder on structures.

A40-H: lampholder A40 - A40B assembled with adapter in white zinc-plated zamak 16 mm high, with threaded hole M10 X1, with screws for nipple-block and ground cable (art. 210).

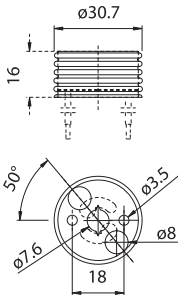
- Weight of the lampholder in standard execution: 35 g.



● Suggested minimum dimension for cables passage (if necessary)

- Fixing of the lampholder by M10 x1 nipples.

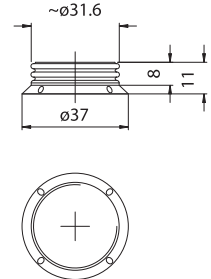
435/16



435/16: case, white zinc-plated iron, with round thread, external diameter 30,7 mm, height 16 mm.

- Weight: 10 g.

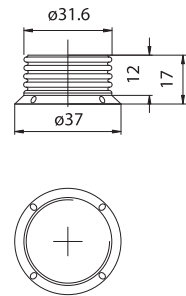
435F/11



435F/11: ring-nut, in white zinc-plated iron, with round thread, external diameter 31,6 mm, height 11 mm, for case 435-.

- Weight: 2,2 g.

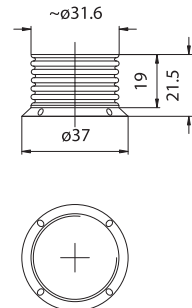
435F/15



435F/15: ring-nut, in white zinc-plated iron, with thread, external diameter 31,6 mm, height 15 mm, for case 435-.

- Weight: 2,2 g.

435F/22



435F/22: ring-nut, in white zinc-plated iron, with round thread, external diameter 31,6 mm, height 22 mm, for case 435-.

- Weight: 2,3 g.

LAMPHOLDERS FOR INCANDESCENT HALOGEN LAMPS

Lampholder whose creepage and clearance distances allow the use in class II fixtures with working voltage up to 250V, if connected with double or triple insulated cables (ref. standard EN 60598.1).

NOTE: back cable-clamp cover to be assembled after having inserted the cables in double or triple insulation, which can exit from the back side or lateral side of the lampholder (ref. standard EN 60598.1 par. 5.2.10.3 "pull test 60 N" and "torsion test 0,15 Nm").

In some applications, it is necessary to guarantee the fastening of the cable-clamps cover by two 3 x 9,5 mm thread-forming screws for plastic, to be inserted in the holes with center distance 24 mm (ref. art. 652).

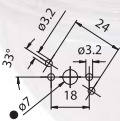
Attention: consider 2 cm of cable loss in lampholder with cables exit from the back side; consider 3 cm of cable loss in lampholder with cables exit from the lateral side.

Note: on request, it is also possible to supply the lampholder with already inserted cables (ref. A42Z or A42U with back side exit, ref. A42ZL or A42UL with lateral side exit).

- Steatite body.
External envelope in black LCP (grey on request).
Contacts in special silver-plated alloy.
Push-in clamps built in the contacts.
Cables exit from the back side or lateral side.
Built in cable-clamp device.

• Glow wire 960° C

- Weight: 23 g.
- Indications to fix the lampholder on structures.



- Suggested minimum dimension for cables passage (if necessary)

- Fixing of the lampholder:
 - by two M3 screws, with maximum head diameter 5,0 mm, 16 mm length + thickness of the material, to be inserted in the holes with center distance 18 mm (available screws M3 x 20 art. 651).
 - by two thread-forming screws for plastic diameter 3 mm, 10 mm length + thickness of the material, to be inserted in the holes with center distance 24 mm positioned in the back side of the lampholder (available thread-forming screws for plastic 3 x12 mm, ref. art. 526).

A42-

Lampholder:

Rated voltage:
Rated current:
Working temperature:
Type of clamps to connect the cables:

Clamps connecting capacity:
In conformity to the standards:

Approval marks:

GZ10 (art. A42Z) for lamp with dichroic reflector
GU10 (art. A42U) for lamp with aluminium reflector

500 V
2 A
T 240°C

SPRING CLAMPS
(push-in insertion)

18 AWG
UL 496
CSA 22.2 N.43

cURus

Single-conductor flexible connecting cables crimped to the lampholder (arranged with crimped end-terminals L= 6 mm)

Insulation	T in °C	Conduct.	Available voltages and AWG		
			300V	600V	18AWG
FEP Single insulation	200	CuNi	•	•	•
FEP+FEP Double insulation	200	CuNi	•		•
PTFE Single insulation	250	CuNi	•	•	•
PTFE+PFA Double insulation	250	CuNi	•		•



FOR NET TENSION 110 - 250V

A42-

2004



Lampholder:

Rated voltage:
Rated current:
Working temperature:
Type of clamps to connect the cables:
Clamps connecting capacity:
Overvoltage category:
Protection degree (IP):
In conformity to the standards:
In conformity to the requirements of the directive:
Approval marks:

GZ10 (art. A42Z) for lamp with dichroic reflector
GU10 (art. A42U) for lamp with aluminium reflector

500 V
2 A
T 260°C

SPRING CLAMPS (push-in insertion)

0,75 - 1,00 mm²
III
IP20
EN 60838-1

2014/35/EU

ENEC O3
CQC



Double insulation

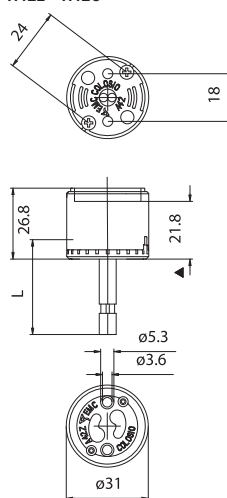
A42Z: lampholder GZ10

A42U: lampholder GU10

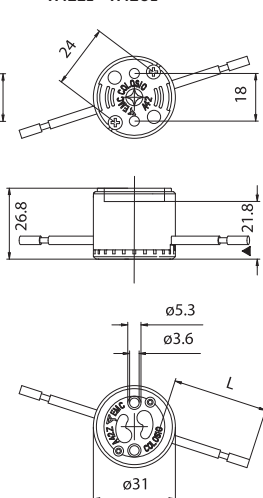
Single-conductor flexible connecting cables which could be connected to the lampholder (arranged with crimped end-terminals):

Insulation	T in °C	Conduct.	Available sections in mm ²			
			0,50	0,75	1,00	1,50
Silicone <i>Single insulation</i>	180	CuSn		•	•	
Silicone+glass-braid <i>Single insulation</i>	180	CuSn		•	•	
FEP <i>Single insulation</i>	180	CuSn		•	•	
FEP+FEP <i>Double insulation</i>	180	CuSn		•	•	
FEP+FEP+FEP <i>Triple insulation</i>	180	CuSn		•		
PTFE <i>Single insulation</i>	180	CuSn		•	•	
PTFE <i>Single insulation</i>	250	CuNi		•	•	
PTFE+PTFE <i>Double insulation</i>	250	CuNi		•	•	
PTFE+PFA <i>Double insulation</i>	250	CuNi		•	•	
PTFE+PFA+PFA <i>Triple insulation</i>	250	CuNi		•		
PFA <i>Single insulation</i>	260	CuNi		•	•	
PFA+PFA <i>Double insulation</i>	260	CuNi		•	•	

A42Z - A42U



A42ZL - A42UL



▲ Reference plane



LAMP HOLDERS FOR INCANDESCENT HALOGEN LAMPS

A60A



Lampholder whose creepage and clearance distances allow the use in class II fixtures with working voltage up to 250V, if connected with double or triple insulated cables (ref. standard EN 60598.1).

Solid fixing steel structure, independent from the body, which allows to carry out quick and safe fixing of the lampholder. This solves the problem of the easy breaking, during the fixing process, of the existing lampholders.

- Steatite body.
Contacts in special alloy.
Retaining springs in stainless steel.
- Weight of the lampholder in standard execution (with cables L = 25 cm): 10 g.



- Instructions to fix the lampholder on structures: snap-in fixing on the support bracket inserted in the accessories presented in the following pages.

PATENTED

Lampholder:	G9
Rated voltage:	250 V
Rated current:	2 A
Working temperature:	T 250°C
Connected cables working temperature:	T 105°± 250°C
In conformity to the standards:	UL 496 CSA 22.2 N.43
Approval marks:	cURus

Single-conductor flexible connecting cables crimped to the lampholder:

Insulation	T in °C	Conduct.	Available voltages and AWG		
			300V	600V	18AWG
Silicone <i>Single insulation</i>	200	CuSn		•	•
FEP <i>Single insulation</i>	200	CuNi	•	•	•
FEP+FEP <i>Double insulation</i>	200	CuNi	•		•
PTFE <i>Single insulation</i>	250	CuNi	•	•	•
PTFE+PFA <i>Double insulation</i>	250	CuNi	•		•

Attention: in the end product the cables connected to this lampholder should not be accessible during the normal replacement operations of the lamp (if accessible a cord-grip device should be provided).



FOR NET TENSION 110 - 250V

A60A

1999



PATENTED

Lampholder:

G9

Rated voltage:

250 V

Rated current:

2 A

Working temperature:

T 280°C

Connected cables

working temperature:

T 105± 250°C

Overtoltage category:

III

Protection degree (IP):

IP20

In conformity to the standards:

EN 60838-1

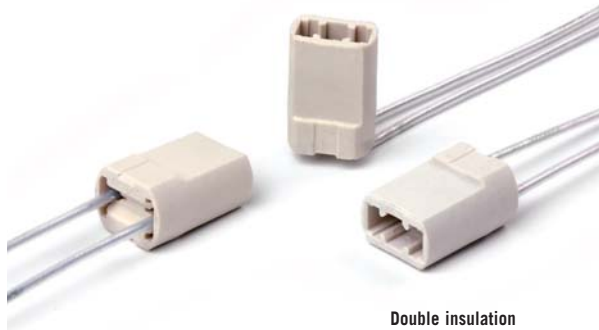
In conformity to the requirements of the directive:

2014/35/EU

Approval marks:

ENEC 03

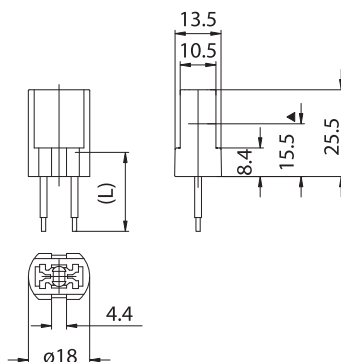
CQC



Double insulation

Single-conductor flexible connecting cables crimped to the lampholder:

Insulation	T in °C	Conduct.	Available sections in mm ²			
			0,50	0,75	1,00	1,50
Silicone Single insulation	180	CuSn	•	•	•	
Silicone+glass-braid Single insulation	180	CuSn	•	•		
FEP Single insulation	180	CuSn	•	•	•	
FEP+FEP Double insulation	180	CuSn	•	•	•	
FEP+FEP+FEP Triple insulation	180	CuSn	•	•		
PTFE Single insulation	180	CuSn	•	•	•	
PTFE Single insulation	250	CuNi	•	•	•	
PTFE+PTFE Double insulation	250	CuNi	•	•	•	
PTFE+PFA Double insulation	250	CuNi		•	•	
PTFE+PFA+PFA Triple insulation	250	CuNi		•		
PFA Single insulation	260	CuNi	•	•	•	
PFA+PFA Double insulation	260	CuNi	•	•	•	



▲ Reference plane



LAMP HOLDERS FOR INCANDESCENT HALOGEN LAMPS

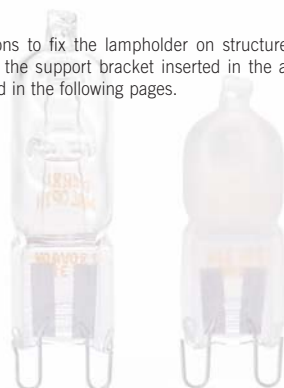
Lampholder whose creepage and clearance distances allow the use in class II fixtures with working voltage up to 250V, if connected with double or triple insulated cables (ref. standard EN 60598.1).

The lampholder has a quick connection system of the cables with double entrance spring clamp, which allows the application in parallel of more lampholders.

Solid fixing steel structure, independent from the body, which allows to carry out quick and safe fixing of the lampholder. This solves the problem of the easy breaking, during the fixing process, of the existing lampholders.

- Steatite body.
Contacts in special alloy.
Spring clamps with double insert ways (two each contact), push-in insertion already built in the lampholder.
Retaining spring in stainless steel.
- Weight: 10 g.

- Instructions to fix the lampholder on structures: snap-in fixing on the support bracket inserted in the accessories presented in the following pages.



A66



PATENTED

Lampholder:	G9
Rated voltage:	250 V
Rated current:	2 A
Working temperature:	T 250°C
Type of clamps to connect the cables:	SPRING CLAMPS (push-in insertion)
Clamps connecting capacity:	18 AWG
In conformity to the standards:	UL 496 CSA 22.2 N.43
Approval marks:	cURus

Single-conductor flexible connecting cables crimped to the lampholder (arranged with crimped end-terminals l = 6 mm, or stripping l = 6 mm)

Insulation	T in °C	Conduct.	Available voltages and AWG		
			300V	600V	18AWG
FEP <i>Single insulation</i>	200	CuNi	•	•	•
FEP+FEP <i>Double insulation</i>	200	CuNi	•		•
PTFE <i>Single insulation</i>	250	CuNi	•	•	•
PTFE+PFA <i>Double insulation</i>	250	CuNi	•		•

Attention: in the end product the cables connected to this lampholder should not be accessible during the normal replacement operations of the lamp (if accessible a cord-grip device should be provided).



FOR NET TENSION 110 - 250V

A66

2003



PATENTED

Lampholder:

G9

Rated voltage:

250 V

Rated current:

2 A

Working temperature:

T 280°C

Type of clamps
to connect the cables:

**SPING CLAMPS
(push-in insertion)**

Clamps connecting
capacity:

0,50 - 0,75 mm²

Overvoltage category:

III

Protection degree (IP):

IP20

In conformity to the standards:

EN 60838-1

In conformity to the requirements
of the directive:

2014/35/EU

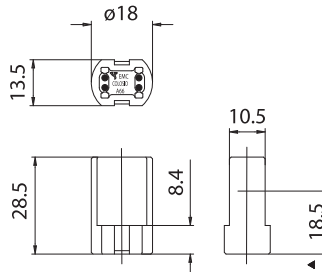
Approval marks:

ENEC 03
CQC

Double insulation

Single-conductor flexible connecting cables which could be connected to the lampholder (arranged with crimped end-terminals, or with stripping 6 mm, or with tinning 6 mm):

Insulation	T in °C	Conduct.	Available sections in mm ²			
			0,50	0,75	1,00	1,50
Silicone <i>Single insulation</i>	180	CuSn	•	•		
FEP <i>Single insulation</i>	180	CuSn	•	•		
FEP+FEP <i>Double insulation</i>	180	CuSn	•	•		
FEP+FEP+FEP <i>Triple insulation</i>	180	CuSn	•	•		
PTFE <i>Single insulation</i>	180	CuSn	•	•		
PTFE <i>Single insulation</i>	250	CuNi	•	•		
PTFE-PTFE <i>Double insulation</i>	250	CuNi	•	•		
PTFE+PFA <i>Double insulation</i>	250	CuNi		•		
PTFE+PFA+PFA <i>Triple insulation</i>	250	CuNi		•		
PFA <i>Single insulation</i>	260	CuNi	•	•		
PFA+PFA <i>Double insulation</i>	260	CuNi	•	•		



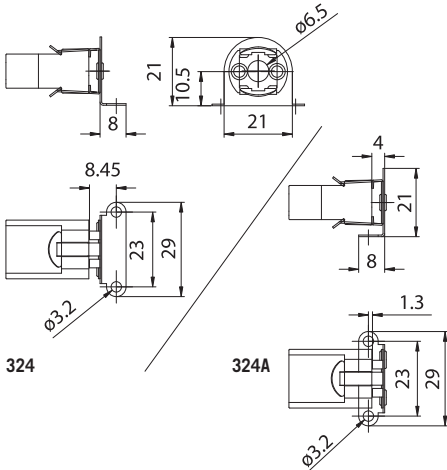
▲ Reference plane



324-



Double insulation



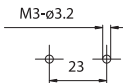
324

324A

324: 90° bracket, for lampholders A60A and A66, in nickel-plated iron, with fixing holes diameter 3,2 mm, with 23 mm center distance, turned towards the cables.

324A: 90° bracket, in nickel-plated iron, with fixing holes diameter 3,2 mm with 23 mm center distance, turned towards the lampholder.

- Weight: 4 g.
- Instructions to fix the bracket on the structure.

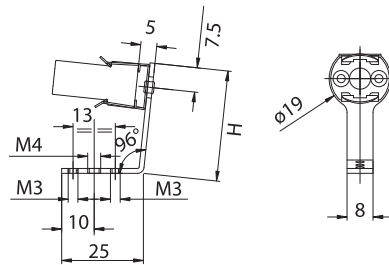


- Bracket fixing by holes diameter 3,2 mm with center distance 23 mm.
- Snap-in fixing to the lampholders.

413-



Double insulation



413-: 96° bracket, for lampholders A60A and A66, in zinc-plated iron, with M3 fixing holes, with 13 mm center distance, and M4 hole.

413/19: bracket with lateral side height 19 mm (H)

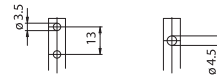
413/23: bracket with lateral side height 23 mm (H)

413/29: bracket with lateral side height 29 mm (H)

413/31: bracket with lateral side height 31 mm (H)

Note: It is also possible to supply the bracket with earth clamp (ref. art. 413T/-).

- Weight: 7 g.
- Instructions to fix the bracket on the structure.



- Fixing of the bracket by screws to be tightened in the chosen threaded holes.
- Snap-in fixing to the lampholders.

319A



PATENTED

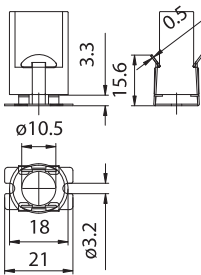
Double insulation

319

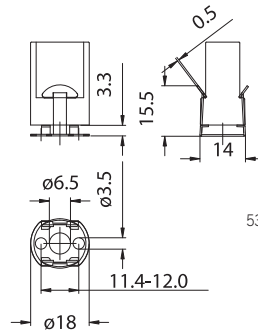
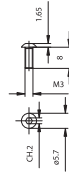


PATENTED

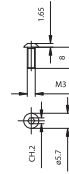
Double insulation



536



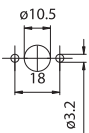
536



319A: support bracket, for lampholders A60A and A66, in steel, with fixing holes diameter 3,2 mm with center distance 18 mm.

Available screws M3 x 8 mm with rounded hexagonal head, diameter 5,7 mm, key 2 mm, in white zinc-plated steel (art. 536).

- Weight: 2 g.
- Instructions to fix the bracket on the structure.

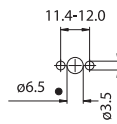


- Bracket fixing by holes diameter 3,2 mm with center distance 18 mm.
- Snap-in fixing to the lampholders.

319: support bracket, for lampholders A60A and A66, in steel, with fixing slotted holes diameter 3,2 mm with center distance 11,4 - 12,0 mm.

Available screws M3 x 8 mm with rounded hexagonal head, diameter 5,7 mm, key 2 mm, in white zinc-plated steel (art. 536).

- Weight: 2 g.
- Instructions to fix the bracket on the structure.



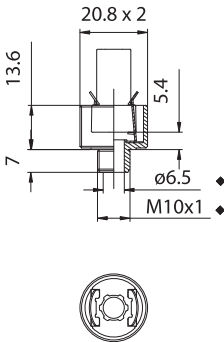
• Suggested minimum dimension for cables passage (if necessary)

- Bracket fixing by holes diameter 3,2 mm with center distance 11,4 - 12 mm.
- Snap-in fixing to the lampholders.

490M



Double insulation



◆ M8 x1 - ø 4,8 mm

490M: adapter, for lampholders A60A and A66, in nickel-plated brass, with round thread 20,8 x2 mm, height 13 mm, with male thread M10 x1.

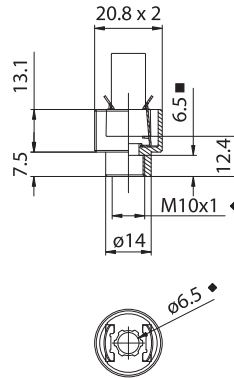
490MA: ◆ version with male thread M8 x1.

• Weight: 12 g.

490



Double insulation



◆ M8 x1 - ø 4,8 mm ■ Thread depth

490: adapter, for lampholders A60A and A66, in nickel-plated brass, with round thread 20,8 x2 mm, height 13 mm, with female thread M10 x1.

490A: ◆ version with female thread M8 x1.

• Weight: 15 g.

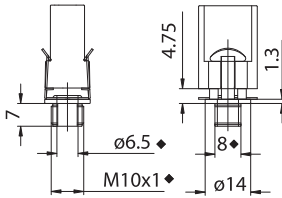
- Fixing of the adapter in faceted holes.
- Snap-in fixing to the lampholders.

- Fixing of the adapter by threaded nipples.
- Snap-in fixing to the lampholders.

320M



Double insulation



◆ M8 x1 - 6,2 - ø 4,8 mm

320M: male nipple, for lampholders A60A and A66, in nickel-plated brass, with thread M10 x1.

320MA: ◆ version with nipple thread M8 x1.

- Weight: 5 g.
- Instructions to fix the nipple on the structure.



320M



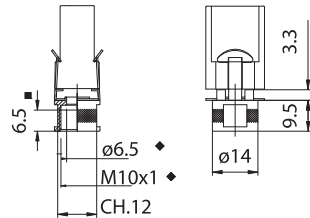
320MA

- Fixing of the adapter in faceted holes.
- Snap-in fixing to the lampholders.

320



Double insulation



◆ M8 x1 - ø 4,8 mm ■ Thread depth

320: female nipple, for lampholders A60A and A66, in nickel-plated brass, with threaded hole M10 x1.

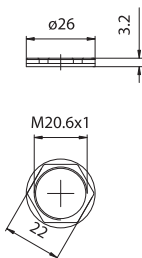
320A: ◆ version with nipple threaded hole M8 x1.

320Z - 320AZ: version nipple equipped with M3 dowel, without head, for nipple-block.

- Weight: 8 g.

- Fixing of the adapter by threaded nipples.
- Snap-in fixing to the lampholders.

334

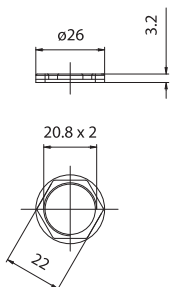


334: ring-nut threaded M20,6 x1, diameter 26 mm, with hexagonal profile key 22 mm, for adapters 333- and 335-.

Note: to easily fix the ring-nut 334 it is also available an hexagonal recessed indent key 22 (ref. art. 440).

- Weight: 3 g.

734

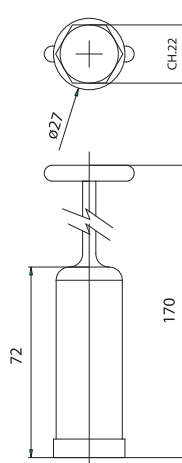


734: ring-nut round threaded 20,8 x2 mm, diameter 26mm, with hexagonal profile key 22 mm, for adapters 490- and 420-.

Note: to easily fix the ring-nut 734 it is also available an hexagonal recessed indent key 22 (ref. art. 440).

- Weight: 3 g.

440



440: key with hexagonal indent form 22 mm, in PA66, for art. 334, ring-nut threaded M20,6 x1 or art. 734, ring-nut round threaded 20,8 x2 mm.

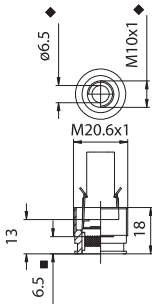
- Weight: 18 g.

335



PATENTED

Double insulation



◆ M8 x1 - \varnothing 4,8 mm ■ Thread depth

335: adapter, for lampholders A60A and A66, in nickel-plated brass, with external thread M20,6 x1 and threaded hole M10 x1.

335A: ◆ version with threaded hole M8 x1.

335Z - 335AZ: version equipped with M3 dowel, without head, for nipple-block.

• Weight: 20 g.

Note: it is possible to process similar customized accessories upon customer's request.

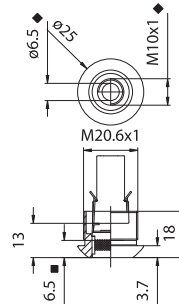
- Fixing of the adapter by threaded nipples.
- Snap-in fixing to the lampholders.

333



PATENTED

Double insulation



◆ M8 x1 - \varnothing 4,8 mm ■ Thread depth

333: adapter, for lampholders A60A and A66, in nickel-plated brass, with external thread M20,6 x1, ledge 25 mm, and threaded hole M10 x1.

333A: ◆ version with threaded hole M8 x1.

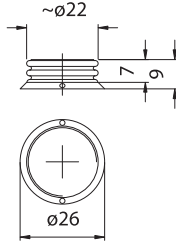
333Z - 333AZ: version equipped with M3 dowel, without head, for nipple-block.

• Weight: 25 g.

Note: it is possible to process similar customized accessories upon customer's request.

- Fixing of the adapter by threaded nipples.
- Snap-in fixing to the lampholders.

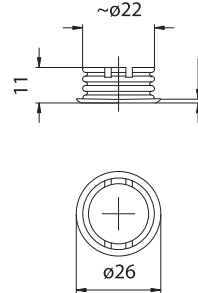
420F/9



420F/9: ring-nut, white zinc-plated iron, with round thread 20,8 x2 mm, height 9 mm, for adapter 420-.

- Weight: 1,5 g.

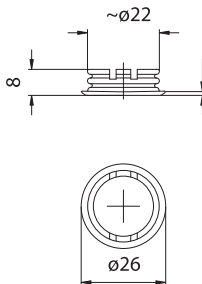
420FV/11T3



420FV/11T3: ring-nut, in white zinc-plated iron, with plain ledge with round thread 20,8 x2 mm, height 11 mm, with rifts, for adapter 420-.

- Weight: 1,5 g.
- Note: this ring-nut works properly when inserted in holes diameter $22 \pm 0,2$ mm.*

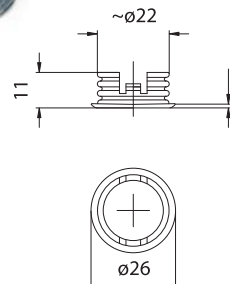
420FV/8T3



420FV/8T3: ring-nut, in white zinc-plated iron, with plain ledge with round thread 20,8 x2 mm, height 8 mm, with rifts, for adapter 420-.

- Weight: 1,5 g.
- Note: this ring-nut works properly when inserted in holes diameter $22 \pm 0,2$ mm.*

420FV/11T63



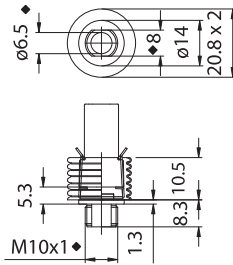
420FV/11T63: ring-nut, in white zinc-plated iron, with plain ledge with round thread 20,8 x2 mm, height 11 mm, with rifts, for adapter 420-.

- Weight: 1,5 g.
- Note: this ring-nut works properly when inserted in holes diameter $22 \pm 0,2$ mm.*

420M



Double insulation



◆ M8 x1 - 6,2 - \varnothing 4,8 mm

420M: adapter, for lampholders A60A and A66, in white zinc-plated iron, with round thread 20,8 x2 mm, height 10,5 mm, with nickel-plated brass male nipple with thread M10 x1.

420MA: ◆ version with nipple thread M8 x1.

- Weight: 7 g.
- Instructions to fix the adapter on the structure.



420M



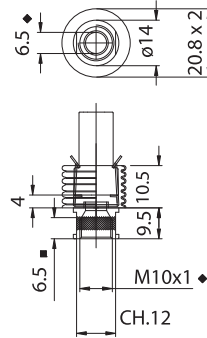
420MA

- Fixing of the adapter in faceted holes.
- Snap-in fixing to the lampholders.

420



Double insulation



◆ M8 x1 - \varnothing 4,8 mm ■ Thread depth

420: adapter, for lampholders A60A and A66, in white zinc-plated iron, with round thread 20,8 x2 mm, height 10,5 mm, with nickel-plated brass female nipple with threaded hole M10 x1.

420A: ◆ version with female nipple threaded M8 x1.

420Z - 420AZ: version nipple equipped with M3 dowel, without head, for nipple-block.

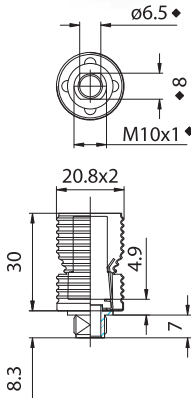
- Weight: 10 g.

- Fixing of the adapter by threaded nipples.
- Snap-in fixing to the lampholders.

420/30M



Double insulation

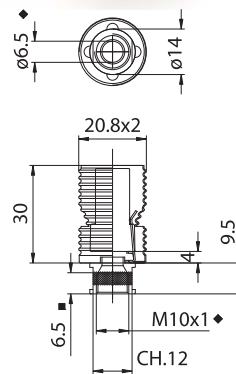


◆ M8 x1 - 6,2 - ø 4,8 mm

420/30



Double insulation



◆ M8 x1 - ø 4,8 mm ■ Thread depth

420/30M: adapter, for lampholders A60A and A66, in white zinc-plated iron, with round thread 20,8 x2 mm, height 30 mm, with nickel-plated brass male nipple with thread M10 x1.

420/30MA: ◆ version with nipple thread M8 x1.

- Weight: 9 g.
- Instructions to fix the adapter on the structure.



420/30M



420/30MA

420/30: adapter, for lampholders A60A and A66, in white zinc-plated iron, with round thread 20,8 x2 mm, height 30 mm, with nickel-plated brass female nipple with threaded hole M10 x1.

420/30A: ◆ version with female nipple threaded M8 x1.

420/30Z - 420/30AZ: version nipple equipped with M3 dowel, without head, for nipple-block.

- Weight: 12 g.

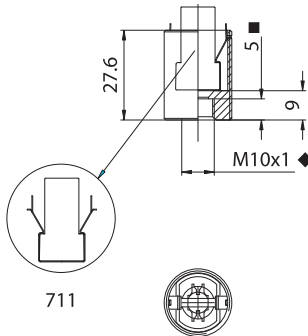
- Fixing of the adapter in faceted holes.
- Snap-in fixing to the lampholders.

- Fixing of the adapter by threaded nipples.
- Snap-in fixing to the lampholders.

740



Double insulation



711

◆ M8 x1 - ø 4,8 mm ■ Thread depth

740: adapter, for lampholders A60A and A66, in nickel-plated brass, with external round thread 20,8 x2 mm, height 27,6 mm, and threaded hole M10 x1.

- Fixing of the lampholder to the adapter with retaining spring, art. 711, assembled to the lampholder during its insertion in the adapter.

740A: ◆ version with threaded hole M8 x1.

- Weight: 30 g.

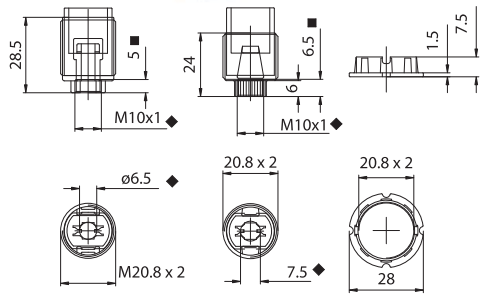
Note: it is possible to process similar customized accessories upon customer's request.

- Fixing of the adapter by threaded nipples.
- Fixing of the lampholder by release of the retaining spring art. 711.

470-



Double insulation



470

470B

470F

◆ M8 x1 - ø 4,8 mm ■ Thread depth

470: adapter, for lampholders A60A and A66, in natural LCP T260°C, with external round thread 20,8 x2 mm, height 28,5 mm, and threaded hole M10 x1.

470A: ◆ version with threaded hole M8 x1.

- Weight: 3 g.

470B: adapter, for lampholders A60A and A66, in natural PPS T210°C, with external round thread 20,8 x2 mm, height 24 mm, and threaded hole M10 x1.

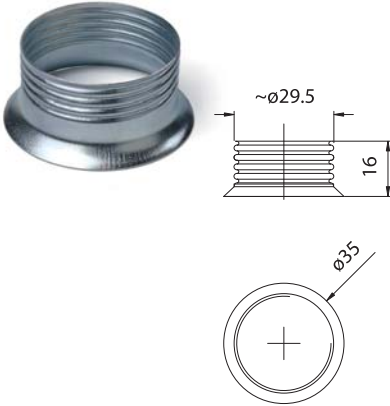
- Weight: 2 g.

470F: ring-nut, in natural LCP, with round thread 20,8 x2 mm, height 7,5 mm, for adapter 470-.

- Weight: 1 g.

- Fixing of the adapter by threaded nipples.
- Snap-in fixing to the lampholders.

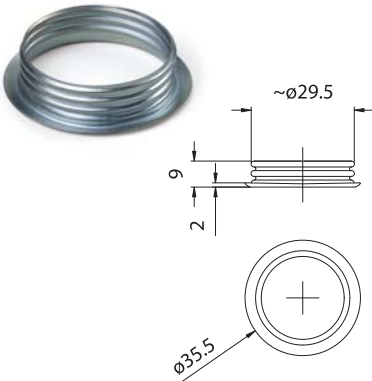
428F/16



428F/16: ring-nut, in white zinc-plated iron, with round thread 28 x2 mm, height 16 mm, for adapter 428.

- Weight: 3,5 g.

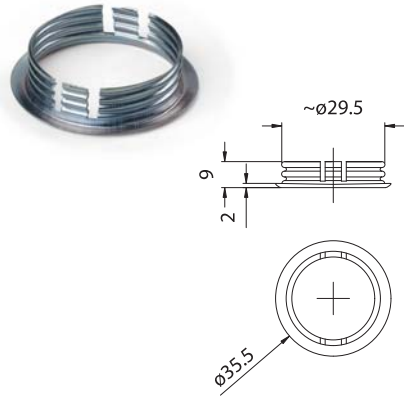
428FV/9



428FV/9: ring-nut, in white zinc-plated iron, with plain ledge with round thread 28 x2 mm, height 9 mm, for adapter 428-.

- Weight: 2 g.

428FV/9T6



428FV/9T6: ring-nut, in white zinc-plated iron, with plain ledge with round thread 28 x2 mm, height 9 mm, with rifts, for adapter 428-.

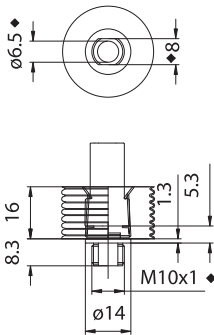
- Weight: 2 g.

Note: this ring-nut works properly when inserted in holes diameter $29,5 \pm 0,2$ mm.

428M



Double insulation



◆ M8 x1 - 6,2 - \varnothing 4,8 mm

428M: adapter, for lampholders A60A and A66, in white zinc-plated iron, with round thread 28 x2 mm, height 16 mm, with nickel-plated brass male nipple with thread M10 x1.

428MA: ◆ version with nipple thread M8 x1.

- Weight: 9 g.
- Instructions to fix the adapter on the structure.



428M



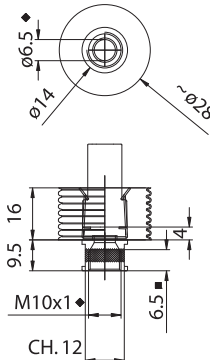
428MA

- Fixing of the adapter in faceted holes.
- Snap-in fixing to the lampholders.

428



Double insulation



◆ M8 x1 - \varnothing 4,8 mm ■ Thread depth

428: adapter, for lampholders A60A and A66, in white zinc-plated iron, with round thread 28 x2 mm, height 16 mm, with nickel-plated brass female nipple with threaded hole M10 x1.

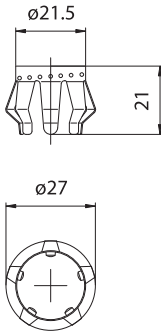
428A: ◆ version with female nipple threaded M8 x1.

428Z - 428AZ: version nipple equipped with M3 dowel, without head, for nipple-block.

- Weight: 12 g.

- Fixing of the adapter by threaded nipples.
- Snap-in fixing to the lampholders.

439

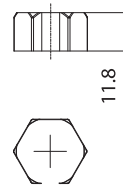


439: “spider” spring, in nickel-plated steel, used to hold glasses with internal hole from 22 to 25 mm to be fastened on specific structures or with the adapters or cases with round thread.

- Weight: 3 g.

Attention: in order to use properly the glass-holder springs, we recommend to carefully evaluate the tolerances of the hole, the glass thickness and the weight of the glass itself.

442



442: hexagonal spring, in steel , height 11,8 mm, used to hold the glass with internal hole diameter 22 ÷ 22,5 mm to be housed on specific structures (see our item 443).

- Weight: 1,2 g.

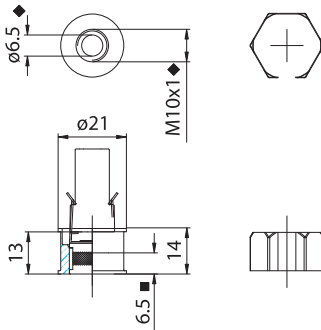
Attention: in order to use properly the glass-holder springs, we recommend to carefully evaluate the tolerances of the hole, the glass thickness and the weight of the glass itself.

465



Double insulation

442



◆ M8 x1 - ø 4,8 mm ■ Thread depth

465: adapter, for lampholders A60A and A66, in nickel-plated brass, with glass-holder spring for glasses with holes diameter $22 \pm 22,5$ and threaded hole M10 x1.

- Glass-holder spring, in steel, included but not assembled on the piece (art. 442).

465A: ◆ version with threaded hole M8 x1.

465Z - 465AZ: version equipped with M3 dowel, without head, for nipple-block.

- Weight: 20 g.

ATTENTION: in order to use properly the glass-holder springs, we recommend to carefully evaluate the tolerances of the hole, the glass thickness and the weight of the glass itself.

Note: it is possible to process similar customized accessories upon customer's request.

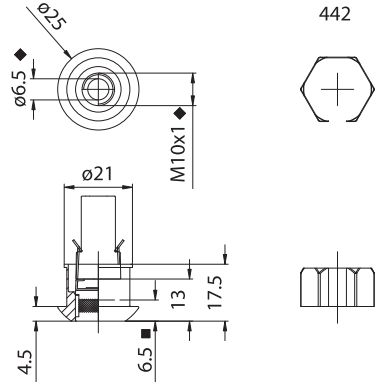
- Fixing of the adapter by threaded nipples.
- Snap-in fixing to the lampholders.

443



Double insulation

442



◆ M8 x1 - ø 4,8 mm ■ Thread depth

443: adapter, for lampholders A60A and A66, in nickel-plated brass, with glass-holder spring for glasses with holes diameter $22 \pm 22,5$, ledge diameter 25 mm, and threaded hole M10 x1.

- Glass-holder spring, in steel, included but not assembled on the piece (art. 442).

443A: ◆ version with threaded hole M8 x1.

443Z - 443AZ: version equipped with M3 dowel, without head, for nipple-block.

- Weight: 25 g.

ATTENTION: in order to use properly the glass-holder springs, we recommend to carefully evaluate the tolerances of the hole, the glass thickness and the weight of the glass itself.

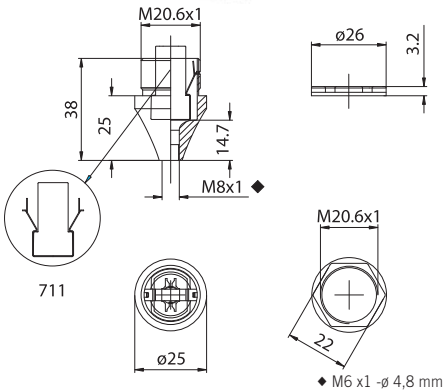
Note: it is possible to process similar customized accessories upon customer's request.

- Fixing of the adapter by threaded nipples.
- Snap-in fixing to the lampholders.

753-



Double insulation
334



753CA: adapter with “concave” profile, for lampholders A60A and A66, in raw brass, with external thread M20,6 x1, ledge 25 mm, and threaded hole M8 x1.

753VA: adapter as 753CA with “convex” profile.

- Fixing of the lampholder to the adapter with retaining spring, art. 711, assembled to the lampholder during its insertion in the adapter.

753CB - 753VB: ♦ versions with threaded hole M6 x1.

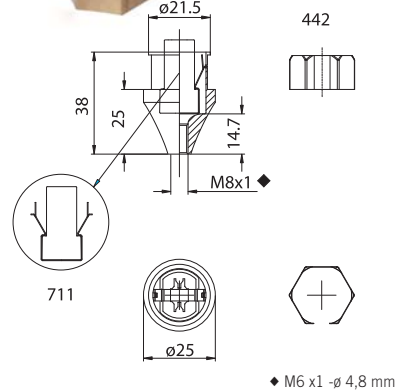
- Weight: 30 g.

- Fixing of the adapter by threaded nipples.
- Fixing of the lampholder by release of the retaining spring art. 711.

750-



Double insulation
442



750CA: adapter with “concave” profile, for lampholders A60A and A66, in raw brass, with glass-holder spring for glasses with holes diameter 22 ÷ 22,5, ledge 25 mm, and threaded hole M8 x1.

750VA: adapter as 750CA with “convex” profile.

- Fixing of the lampholder to the adapter with retaining spring, art. 711, assembled to the lampholder during its insertion in the adapter.
- Glass-holder spring, in steel, included but not assembled on the piece (art.442).

750CB - 750VB: ♦ versions with threaded hole M6 x1.

- Weight: 30 g.

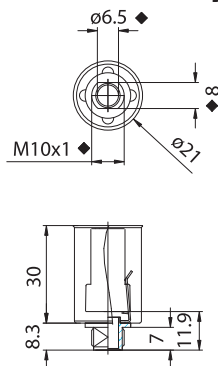
ATTENTION: in order to use properly the glass-holder springs, we recommend to carefully evaluate the tolerances of the hole, the glass thickness and the weight of the glass itself.

- Fixing of the adapter by threaded nipples.
- Fixing of the lampholder by release of the retaining spring art. 711.

488M



Double insulation



◆ M8 x1 - 6,2 - ø 4,8 mm

488M: adapter, for lampholders A60A and A66, in white zinc-plated iron, diameter 21 mm, height 30 mm, with nickel-plated brass male nipple with thread M10 x1.

488MA: ◆ version with nipple thread M8 x1.

- Weight: 9 g.
- Instructions to fix the adapter on the structure.



488M



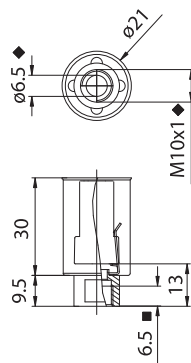
488MA

- Fixing of the adapter in faceted holes.
- Snap-in fixing to the lampholders.

488



Double insulation



◆ M8 x1 - ø 4,8 mm ■ Thread depth

488: adapter, for lampholders A60A and A66, in white zinc-plated iron, diameter 21 mm, height 30 mm, with nickel-plated brass female nipple with threaded hole M10 x1.

488A: ◆ version with female nipple threaded M8 x1.

488Z - 488AZ: version nipple equipped with M3 dowel, without head, for nipple-block.

- Weight: 12 g.

- Fixing of the adapter by threaded nipples.
- Snap-in fixing to the lampholders.

468-



Double insulation

468: case, for lampholders A60A and A66, in white zinc-plated iron, diameter 23,5 mm and 21 mm height, with glass-holder spring used to hold pyrex tubes with internal diameter 24mm.

468F - 468FA: case 468 with support bracket for the lampholders and nickel-plated brass female nipple with threaded hole M10 x1 (468F) or M8 x1 (468FA).

468M - 468MA: case 468 with support bracket for the lampholders and nickel-plated brass male nipple with thread M10 x1 (468M) or M8 x1 (468MA).

468FC5 - 468FAC5: case 468 with support bracket for the lampholders, chrome-plated iron cover flange, with holes and edge 5,4 mm height, and brass female nipple with threaded hole M10 x1 (468FC5) or M8 x1 (468FAC5). Other cover flange finishings on request.

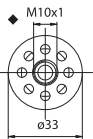
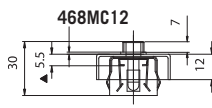
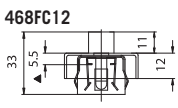
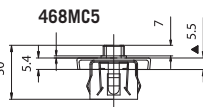
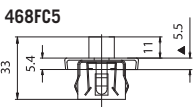
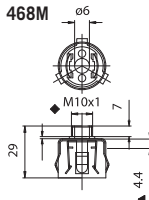
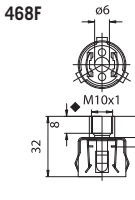
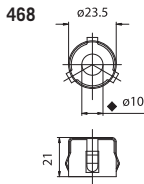
468MC5 - 468MAC5: case 468 with support bracket for the lampholders, chrome-plated iron cover flange with holes and edge 5,4 mm height, and brass male nipple with thread M10 x1 (468MC5) or M8 x1 (468MAC5). Other cover flange finishings on request.

468FC12 - 468FAC12: case 468 with support bracket for the lampholders, chrome-plated iron cover flange with holes and edge 12 mm height, and brass female nipple with threaded hole M10 x1 (468FC12) or M8 x1 (468FAC12). Other cover flange finishings on request.

468MC12 - 468MAC12: case 468 with support bracket for the lampholders, chrome-plated iron cover flange with holes and edge 12 mm height, and brass male nipple with thread M10 x1 (468MC12) or M8 x1 (468MAC12). Other cover flange finishings on request.

ATTENTION: in order to use properly the glass-holder springs, we recommend to carefully evaluate the tolerances of the hole, the glass thickness and the weight of the glass itself.

- Fixing of the adapter by threaded nipples.
- Snap-in fixing to the lampholders.

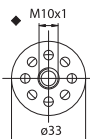
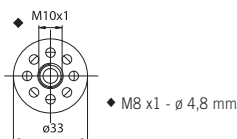
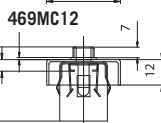
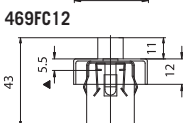
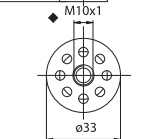
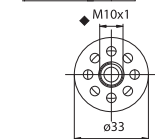
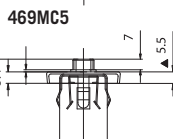
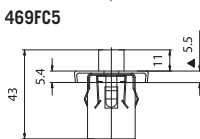
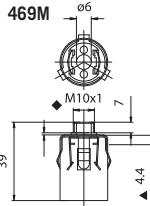
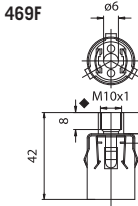
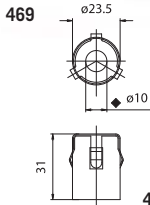


◆ M8 x1 - ϕ 4,8 mm

469-



Double insulation



◆ M8 x1 - ϕ 4,8 mm

469: case, for lampholders A60A and A66, in white zinc-plated iron, diameter 23,5 mm and 31 mm height, with glass-holder spring used to hold pyrex tubes with internal diameter 24mm.

469F - 469FA: case 469 with support bracket for the lampholders and nickel-plated brass female nipple with threaded hole M10 x1 (469F) or M8 x1 (469FA).

469M - 469MA: case 469 with support bracket for the lampholders and nickel-plated brass male nipple with thread M10 x1 (469M) or M8 x1 (469MA).

469FC5 - 469FAC5: case 469 with support bracket for the lampholders, chrome-plated iron cover flange, with holes and edge 5,4 mm height, and brass female nipple with threaded hole M10 x1 (469FC5) or M8 x1 (469FAC5). Other cover flange finishings on request.

469MC5 - 469MAC5: case 469 with support bracket for the lampholders, chrome-plated iron cover flange with holes and edge 5,4 mm height, and brass male nipple with thread M10 x1 (469MC5) or M8 x1 (469MAC5). Other cover flange finishings on request.

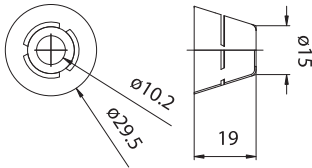
469FC12 - 469FAC12: case 469 with support bracket for the lampholders, chrome-plated iron cover flange with holes and edge 12 mm height, and brass female nipple with threaded hole M10 x1 (469FC12) or M8 x1 (469FAC12). Other cover flange finishings on request.

469MC12 - 469MAC12: case 469 with support bracket for the lampholders, chrome-plated iron cover flange with holes and edge 12 mm height, and brass male nipple with thread M10 x1 (469MC12) or M8 x1 (469MAC12). Other cover flange finishings on request.

ATTENTION: in order to use properly the glass-holder springs, we recommend to carefully evaluate the tolerances of the hole, the glass thickness and the weight of the glass itself.

- Fixing of the adapter by threaded nipples.
- Snap-in fixing to the lampholders.

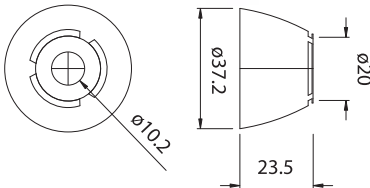
427



427: conical case, in raw iron, external diameter 29,5 mm, height 19 mm.

- Weight: 6 g.

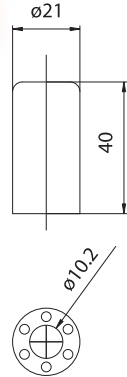
431



431: conical case, in raw iron, external diameter 37,2 mm, height 23,5 mm.

- Weight: 10 g.

423-



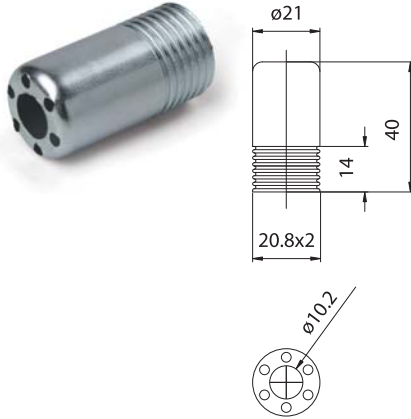
423: case, in white zinc-plated iron, external diameter 21 mm, height 40 mm.

423g: case as above but in raw iron.

4230T: case as above but in raw brass.

- Weight: 6 g.

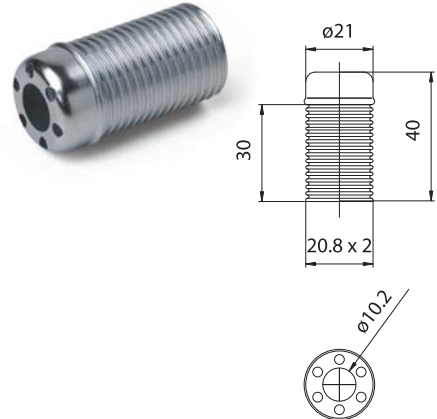
423/14



423/14: case, in white zinc-plated iron, external diameter 21 mm, height 40 mm, with partial round thread 20,8 x2 mm height 14 mm.

- Weight: 6 g.

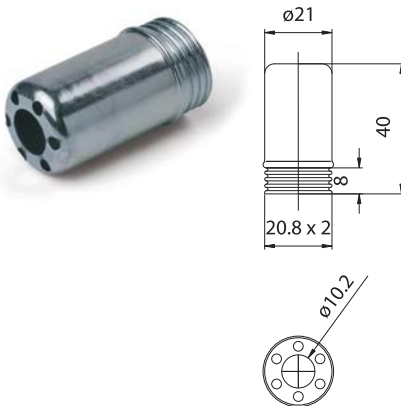
423/30B



423/30B: case, in white zinc-plated iron, external diameter 21 mm, height 40 mm, with partial round thread 20,8 x2 mm height 30 mm with ledge.

- Weight: 6 g.

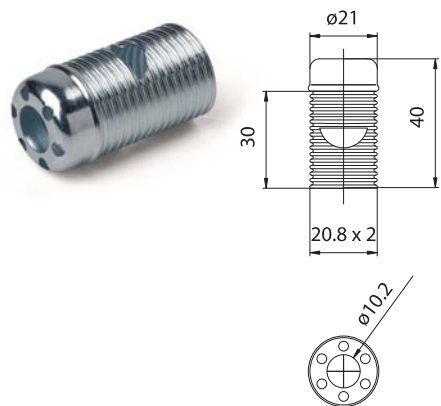
423/8B



423/8B: case, in white zinc-plated iron, external diameter 21 mm, height 40 mm, with partial round thread 20,8 x2 mm height 8 mm, with ledge.

- Weight: 6 g.

423/30BF



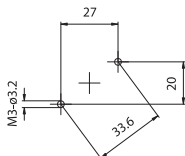
423/30BF: case, in white zinc-plated iron, external diameter 21 mm, height 40 mm, with partial round thread 20,8 x2 mm height 30 mm, with ledge and rift.

- Weight: 6 g.

LAMPHOLDERS FOR INCANDESCENT HALOGEN LAMPS

- Porcelain body.
Contacts in nickel-plated brass.
Nickel-plated brass clamps with screws not completely tightened.
- Weight of the lampholder: 75 g.

- Instructions to fix the lampholder on structures.



- Eventual fixing of the lampholder using holes diameter 3,4 mm.
center distance 33,6 mm.



FOR NET TENSION 110 - 250V

P35

CE

Lampholder:

Rated voltage:

Rated current:

Working temperature:

Type of clamps to connect the cables:

Connecting capacity of the clamps:

Overvoltage category:

Protection degree (IP):

In conformity to the standards:

In conformity to the requirements of the directive:

Gx16d

250 V

10 A

T 250°C

SCREW CLAMPS

0,75 ÷ 2,5 mm²

III

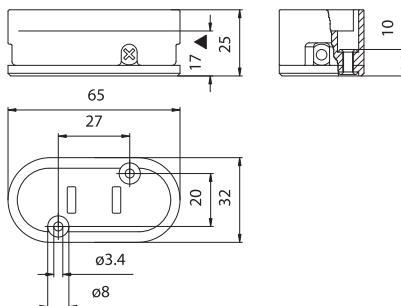
IP20

EN 60838-1

2014/35/EU



Approval marks:



▲ Reference plane

