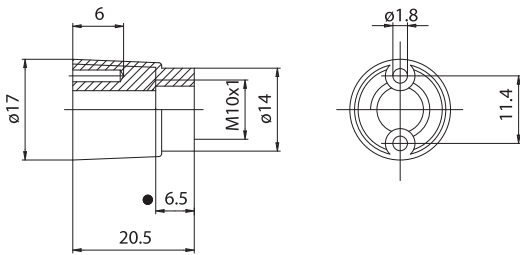


378



● Thread depth

378: adapter, in white zinc-plated zamak, height 20,5 mm, threaded hole M10 x1 for very low tension lampholders, serie P54, P54M, P65 and P80.

378Z: adapter 378 with M3 dowel for nipple block.

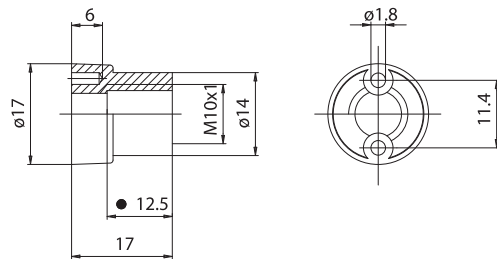
• Weight: 10 g.

Note:

the screws to fix the lampholders on the adapter are:

- for lampholders P54, P54M and P80 self-threading screws with cross head 2,2 x 9,5 mm (art. 512);
- for lampholder P65 self-threading screws with cross head 2,2 x 13 mm (art. 513).

385



● Thread depth

385: adapter, in white zinc-plated zamak, height 17,5 mm, threaded hole M10 x1 for very low tension lampholders, serie P54, P54M and P65.

385Z: adapter 378 with M3 dowel for nipple block.

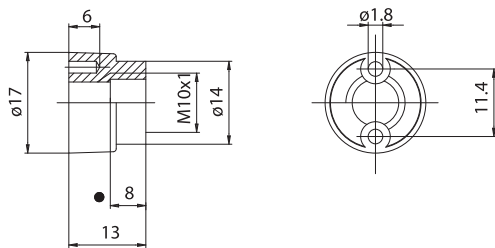
• Weight: 10 g.

Note:

the screws to fix the lampholder on the adapter are:

- for lampholders P54 and P54M self-threading screws with cross head 2,2 x 9,5 mm (art. 512);
- for lampholder P65 self-threading screws with cross head 2,2 x 13 mm (art. 513).

384



● Thread depth

384: adapter, in white zinc-plated zamak, height 13 mm, threaded hole M10 x1 for very low tension lampholders, serie P54, P54M, P65.

384Z: adapter 384 with M3 dowel for nipple block.

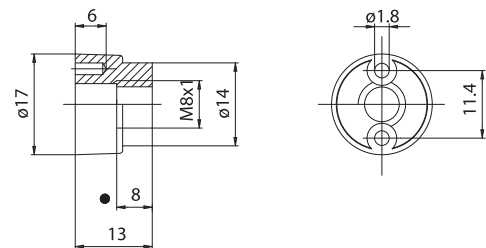
• Weight: 7 g.

Note:

the screws to fix the lampholder on the adapter are:

- for lampholders P54, P54M self-threading screws with cross head 2,2 x 9,5 mm (art. 512);
- for lampholder P65 self-threading screws with cross head 2,2 x 13 mm (art. 513).

383



● Thread depth

383: adapter, white zinc-plated zamak, height 13 mm, threaded hole M8 x1 for very low tension lampholders, serie P54, P54M, P65.

383Z: adapter 383 with M3 dowel for nipple block.

• Weight: 8 g.

Note:

the screws to fix the lampholder on the adapter are:

- for lampholders P54, P54M self-threading screws with cross head 2,2 x 9,5 mm (art. 512);
- for lampholder P65 self-threading screws with cross head 2,2 x 13 mm (art. 513).