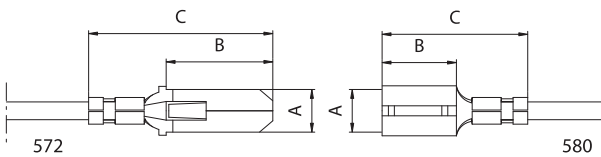
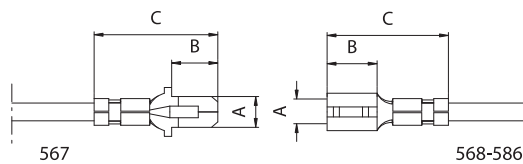
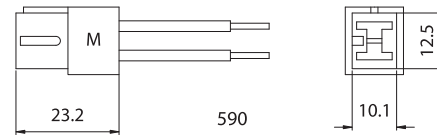
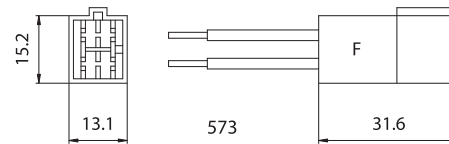
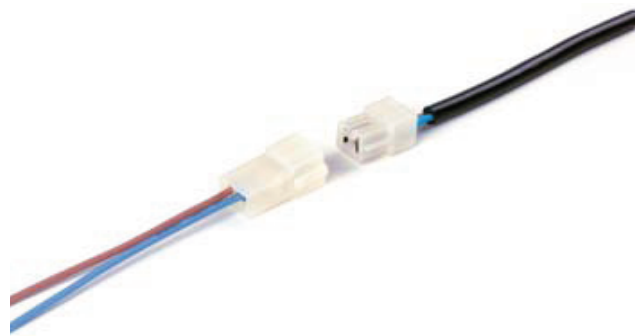


CABLES TERMINALS



CONNECTORS



- Brass terminals, plug male and socket female, for lamellar connections which is possible to connect to all the cables listed in "Section 9".

- Polarised connector/housing, plug male and socket female, in neutral PA6 V2.

Art.	Type M-F	Width thickness (A)	Contact length (B)	Total length (C)	Retention system	Material thickness	Finishing
567	M male	2,8 x 0,8	5,9	12,7	none	0,40	tinned
568	F female	2,8 x 0,8	6,4	14,0	none	0,30	tinned
586	F female	2,8 x 0,5	6,4	14,0	none	0,30	tinned
572	M male	6,3 x 0,8	15,7	28,0	hold-teeth	0,40	raw
580	F female	6,3 x 0,8	7,7	19,1	hold-teeth	0,40	tinned

Art. M-F	Type	For series	N° vie	Dimensions mm	Tension	Fixing
573	M male-holder	6,3x0,8	2	15,2x13,1x31,6	24V	free
590	F female-holder	6,3x0,8	2	12,5x10,1x23x2	24V	free