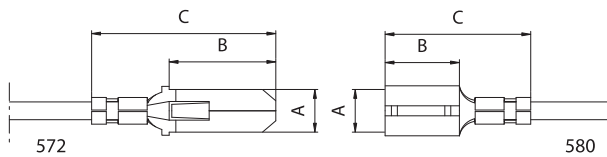
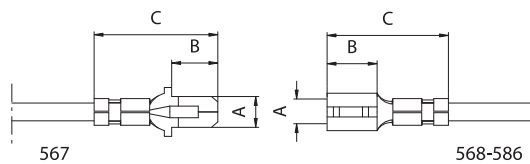
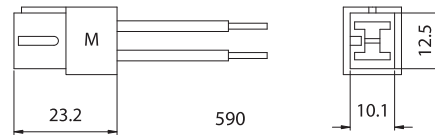
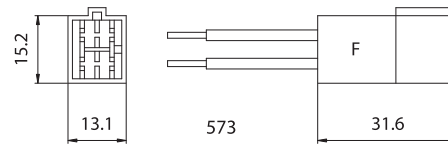
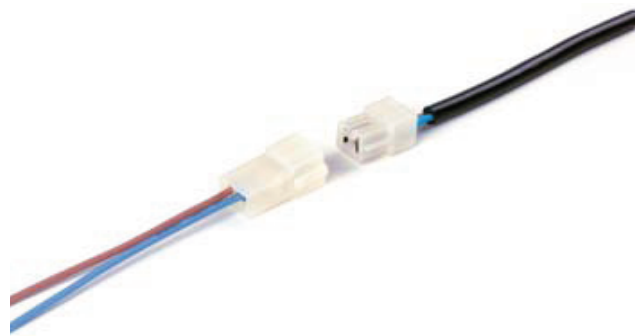


CABLES TERMINALS



CONNECTORS



- Brass terminals, plug male and socket female, for lamellar connections which is possible to connect to all the cables listed in "Section 9".

- Polarised connector/housing, plug male and socket female, in neutral PA6 V2.

| Art. | Type M-F | Width thickness (A) | Contact length (B) | Total length (C) | Retention system | Material thickness | Finishing |
|------|----------|---------------------|--------------------|------------------|------------------|--------------------|-----------|
| 567 | M male | 2,8 x 0,8 | 5,9 | 12,7 | none | 0,40 | tinned |
| 568 | F female | 2,8 x 0,8 | 6,4 | 14,0 | none | 0,30 | tinned |
| 586 | F female | 2,8 x 0,5 | 6,4 | 14,0 | none | 0,30 | tinned |
| 572 | M male | 6,3 x 0,8 | 15,7 | 28,0 | hold-teeth | 0,40 | raw |
| 580 | F female | 6,3 x 0,8 | 7,7 | 19,1 | hold-teeth | 0,40 | tinned |

| Art. M-F | Type | For series | N° vie | Dimensions mm | Tension | Fixing |
|----------|-----------------|------------|--------|----------------|---------|--------|
| 573 | M male-holder | 6,3x0,8 | 2 | 15,2x13,1x31,6 | 24V | free |
| 590 | F female-holder | 6,3x0,8 | 2 | 12,5x10,1x23x2 | 24V | free |