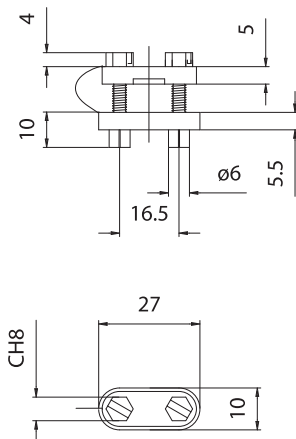


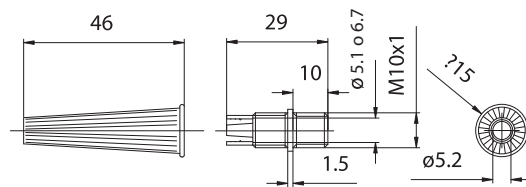
## 760



**760: Cable clamp** in natural PA66 T-20 +T125°C suitable to clamp cables with diameter between 3 and 10 mm.

- Fixing tightening the two plastic screws positioning the device on structures, thickness 0,8 - 2,5 mm, pre-arranged with holes diameter 6 mm with center distance 16,5 mm.

## 432



- **Cable clamp** in plastic material with male thread M10 x1.

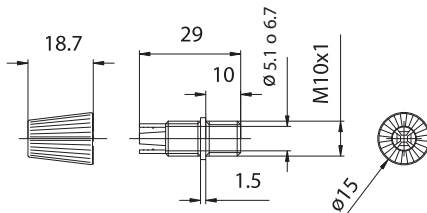
**432GH-:** ring part of the cable clamp.

**430--:** part of cable clamp body with hole diameter 5,1 mm. Suitable to clamp cables with diameter between diameter 4,3 and 5,0 mm.

**430/5-:** part of cable clamp body with hole diameter 6,7 mm. Suitable to clamp cables with diameter between diameter 4,8 and 6,5 mm.

- Available colours:  
**T** = transparent, in polycarbonate  
**B** = white, in PA66  
**N** = black, in PA66

## 430



- **Cable clamp** in plastic material with male thread M10 x1.

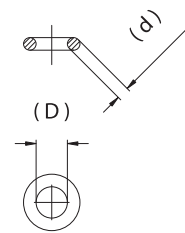
**430GH-**: ring part of the cable clamp.

**430--**: part of cable clamp body with hole diameter 5,1 mm. Suitable to clamp cables with diameter between 4,3 and 5,0 mm.

**430/5-**: part of cable clamp body with hole diameter 6,7 mm. Suitable to clamp cables with diameter between 4,8 and 6,5 mm.

- Available colours:  
**T** = transparent, in polycarbonate  
**B** = white, in PA66  
**N** = black, in PA66

## 1063



- **1063-**: "O" rings in transparent silicone. Normally used to hold the power cables close to the suspension device.

Article	D	d
<b>1063</b>	4,48 mm	1,78 mm
<b>1063/2</b>	1,8 mm	1,78 mm
<b>1063/3</b>	2,9 mm	1,78 mm
<b>1063/4</b>	3,7 mm	1,78 mm
<b>1063/5</b>	5,3 mm	1,78 mm
<b>1063/6</b>	6,7 mm	1,78 mm
<b>1063/7</b>	7,7 mm	1,78 mm
<b>1063/8</b>	8,8 mm	1,78 mm

- Other dimensions on request.