

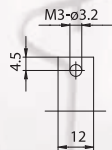
# LAMPHOLDERS FOR DISCHARGE LAMPS

**Attention:** the back side of this lampholder has uncovered parts under tension. During the project verify that the surface and air distance, prescribed by lighting fixtures construction standards, will be respected. Verify also the protection against accidental contacts.

**Note:** the version A01P, lampholder equipped with protection device in LCP, grants the protection against electrical shocks caused by accidental contacts with the back side of the lampholder.

**A01F, lampholder with micarta plate positioned between the contacts and the pressure spring. The insulation plate grants the protection against the electric shock with the standardized IEC 529 test-finger in the contact area lamp-lampholder, with inserted lamp. PATENTED**

- Steatite body.  
Contacts in electrolytic copper and silver.  
Pressure spring in nickel-plated, hardened and normalized, steel.  
Self-threading fixing screws M3.
- Weight of the lampholders pair in standard execution (with 25 cm of cables): 50 g.
- D: fixing distance of the lampholders pair on rigid structures:
  - 94,0 mm for lamps with RX7s cap, with "Z nom." lamp 114,2 mm (70W)
  - 111,8 mm for lamps with RX7s cap, with "Z nom." lamp 132,0 mm (150W)
- d: distance between contacts = D + 16,4 mm
- Indications to fix the lampholder on structures.



- Fixing of the lampholders pair by M3 self-threading screws inserted in the bodies. Standard screw M3 x 8 with cross head. Other lengths on request (minimum length for threaded supports: 6 mm).

## A01H



<b>Lampholder:</b>	<b>RX7s</b>
Maximum power:	<b>1500 W</b>
Rated voltage:	<b>250 V</b>
Impulse voltage:	<b>5 kV</b>
Working temperature:	<b>T 250°C</b>
Connected cables working temperature:	<b>T 105 ÷ 250°C</b>
In conformity to the standards:	<b>UL 496 CSA 22.2 N.43</b>
Approval marks:	<b>cURus</b>

Single-conductor flexible connecting cables, polarized black and white, crimped to the lampholder:

Insulation	T in °C	Conduct.	Available voltages and AWG	
			600V	18AWG
Silicone Single insulation	200	CuSn	•	•
Silicone+glass-braid Single insulation	200	CuSn	•	•
PTFE Single insulation	250	CuNi	•	•
PTFE+PFA Double insulation	250	CuNi	•	•



# A01H

1984-1998



## Lampholder:

Rated voltage: **500 V**  
 Impulse voltage: **5 kV**  
 Rated current: **6 A**  
 Working temperature: **T 300°C**  
 Connected cables working temperature: **T 105°÷ 250°C**  
 Overvoltage category: **III**  
 Protection degree (IP): **IP00**  
 In conformity to the standards: **CEI EN 60838-1**  
 In conformity to the requirements of the directive: **2014/35/EU**

Approval marks:

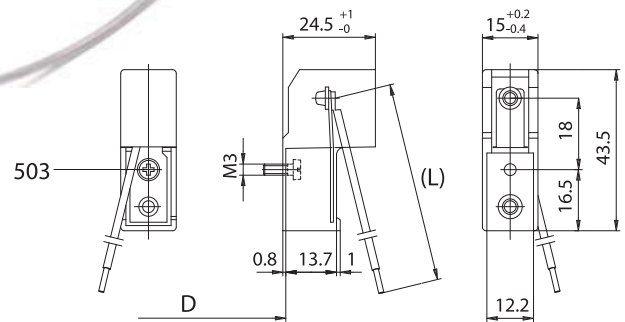
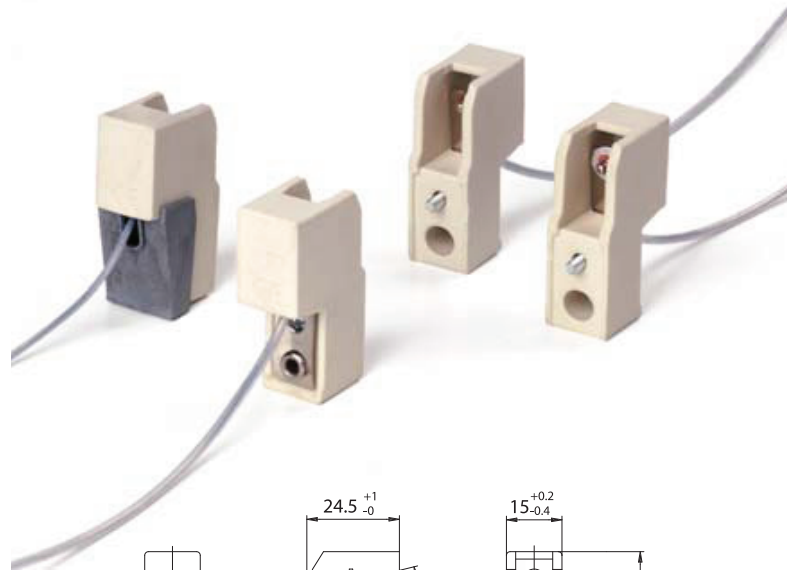
**CQC**

**A01HP:** A01H lampholder equipped with protection device in LCP T250°C (T240°C for UL), which covers the back pressure springs.

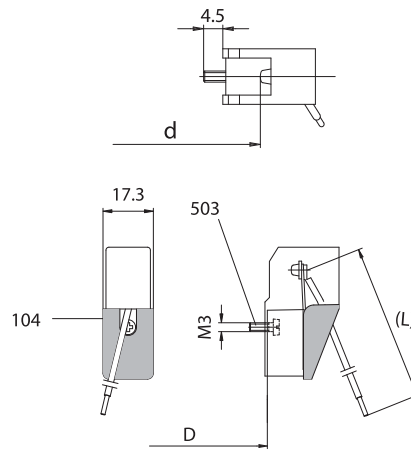
**A01HF:** A01H lampholder with micarta plate positioned between the contacts and the pressure springs.

Single-conductor flexible connecting cables crimped to the lampholder:

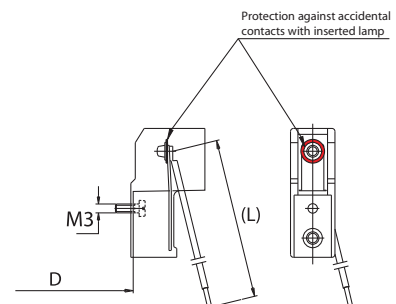
Insulation	T in °C	Conduct.	Available sections and tensions			
			Pulse kV	0,75 mm <sup>2</sup>	1,00 mm <sup>2</sup>	1,50 mm <sup>2</sup>
Oversize silicone <i>Single insulation</i>	180	CuSn	10kV		•	
Oversize silicone <i>Single insulation</i>	180	CuSn	5kV	•	•	
Silicone+Silicone <i>Single insulation</i>	180	CuSn	5kV	•	•	
Oversize PTFE <i>Single insulation</i>	250	CuNi	5kV		•	
Oversize PTFE +PFA <i>Double insulation</i>	250	CuNi	5kV		•	



**A01H**



**A01HP**



**A01HF**

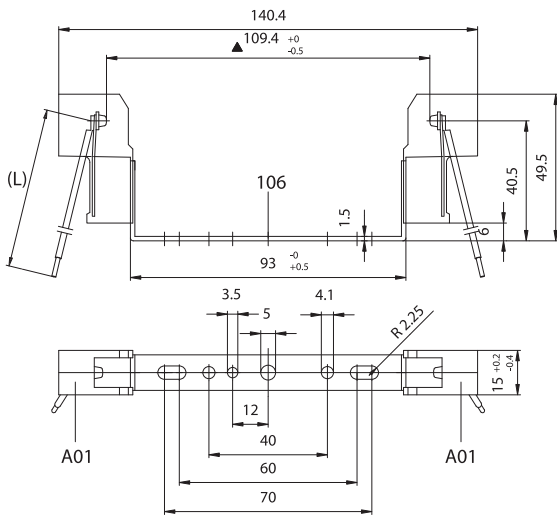
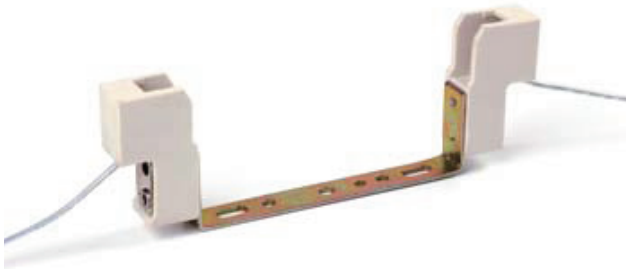
- 503 - Self-threading screw M3 x 8 (other lengths on request)



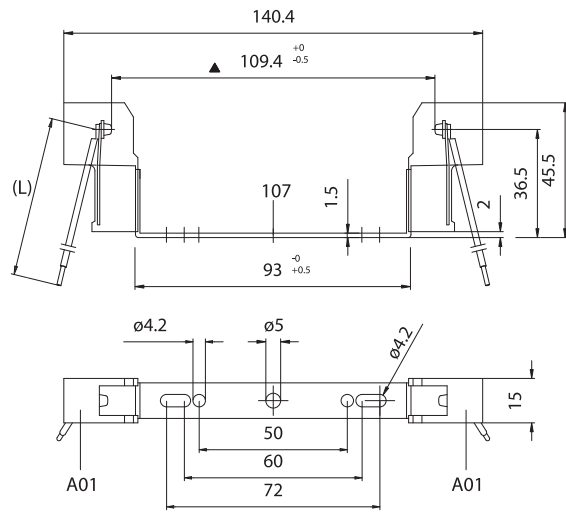
# A03H



# A04H



▲ Dimension without inserted lamp in the lampholder



▲ Dimension without inserted lamp in the lampholder

**A03H:** A01H lampholders assembled with spacer bracket in zinc-plated iron for RX7s cap, with “Z nom.” lamp 114,2 mm (70W) art. 106.

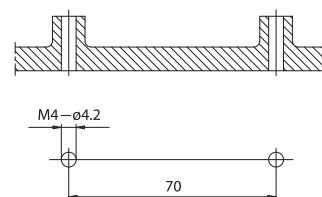
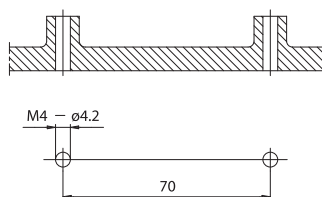
**A04H:** A01H lampholders assembled with spacer bracket in zinc-plated iron for RX7s cap, with “Z nom.” lamp 114,2 mm (70W) art 107.

**A03HP:** version with lampholders equipped with protection in LCP which covers the pressure springs (see A01HP).

**A04HP:** version with lampholders equipped with protection in LCP which covers the pressure springs (see A01HP).

- Weight of the lampholder in standard execution: 65 g.
- Instructions to fix the lampholder on structures.

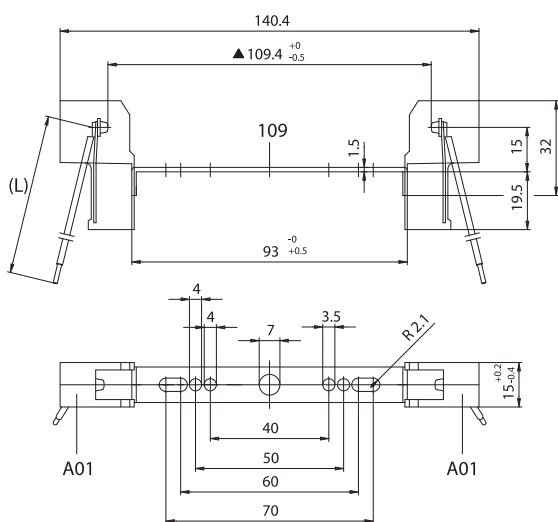
- Weight of the lampholder in standard execution: 65 g.
- Instructions to fix the lampholder on structures.



- Fixing of the lampholder by M4 screws to be inserted in the holes of the bracket, placed on two supports with a center distance of 70 mm.

- Fixing of the lampholder by M4 screws to be inserted in the holes of the bracket, placed on two supports with a center distance of 70 mm.

# A06H

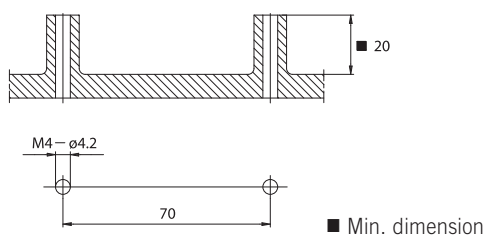


▲ Dimension without inserted lamp in the lampholder

**A06H:** A01H lampholders assembled with spacer bracket in zinc-plated iron for RX7s cap, with “Z nom.” lamp 114,2 mm (70W) art. 109.

**A06HP:** version with lampholders equipped with protection in LCP which covers the pressure springs (see A01HP).

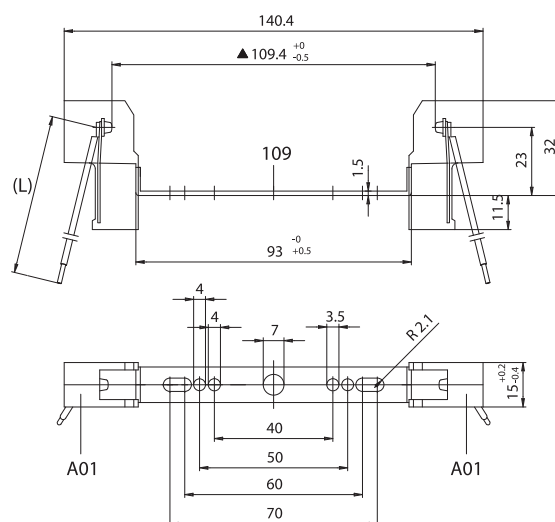
- Weight of the lampholder in standard execution: 60 g.
- Instructions to fix the lampholder on structures.



■ Min. dimension

- Fixing of the lampholder by M4 screws to be inserted in the holes of the bracket, placed on two supports with a center distance of 70 mm.

# A06UH

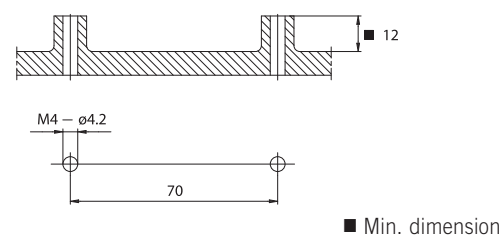


▲ Dimension without inserted lamp in the lampholder

**A06UH:** A01H lampholders assembled with spacer bracket in zinc-plated iron for RX7s cap, with “Z nom.” lamp 114,2 mm (70W) art. 109.

**A06UHP:** version with lampholders equipped with protection in LCP which covers the pressure springs (see A01HP).

- Weight of the lampholder in standard execution: 60 g.
- Instructions to fix the lampholder on structures.



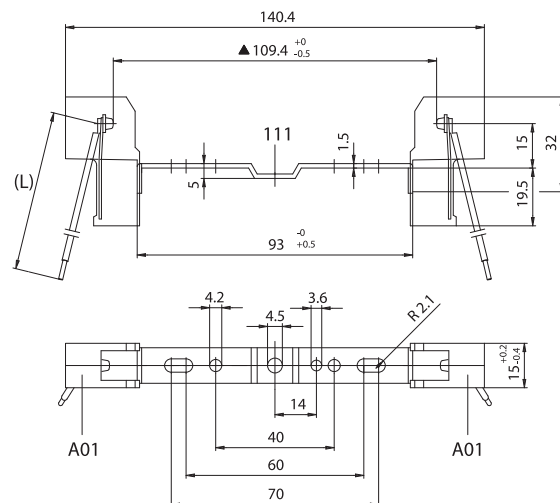
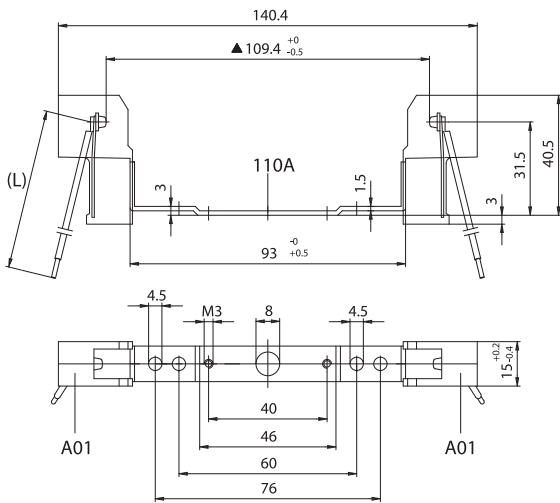
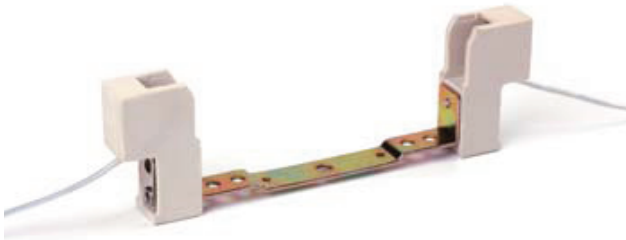
■ Min. dimension

- Fixing of the lampholder by M4 screws to be inserted in the holes of the bracket, placed on two supports with a center distance of 70 mm.

# A07H



# A08H



▲ Dimension without inserted lamp in the lampholder

▲ Dimension without inserted lamp in the lampholder

**A07H:** A01H lampholders assembled with spacer bracket in zinc-plated iron for RX7s cap, with “Z nom.” lamp 114,2 mm (70W) art. 110A.

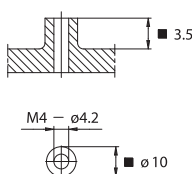
**A08H:** A01H lampholders assembled with spacer bracket in zinc-plated iron for RX7s cap, with “Z nom.” lamp 114,2 mm (70W) art. 111.

**A07HP:** version with lampholders equipped with protection in LCP which covers the pressure springs (see A01HP).

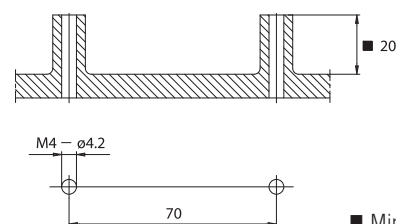
**A08HP:** version with lampholders equipped with protection in LCP which covers the pressure springs (see A01HP).

- Weight of the lampholder in standard execution: 65 g.
- Instructions to fix the lampholder on structures.

- Weight of the lampholder in standard execution: 60 g.
- Instructions to fix the lampholder on structures.



■ Min. dimension

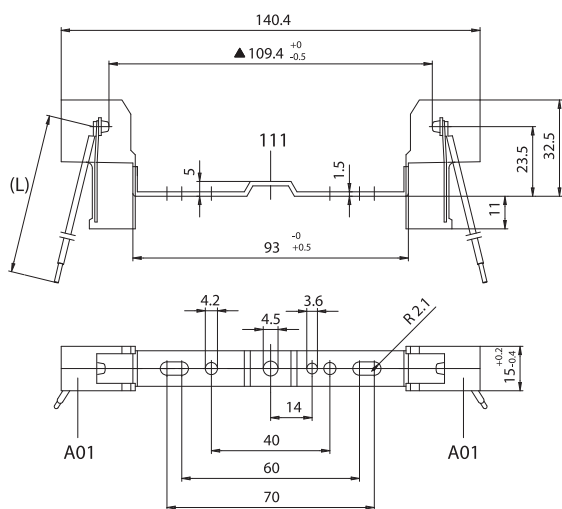
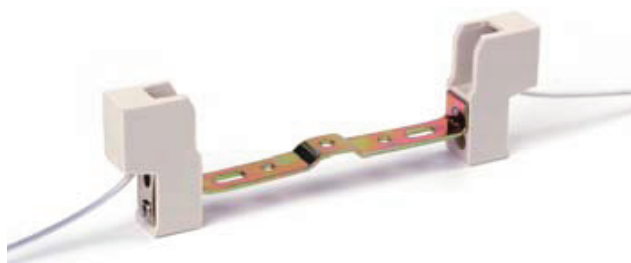


■ Min. dimension

- Fixing of the lampholder by M4 screws (with head with minimum diameter 8 mm) to be inserted in the central hole of the bracket, placed on a support.

- Fixing of the lampholder by M4 screws to be inserted in the holes of the bracket, placed on two supports with a center distance of 70 mm.

# A08UH

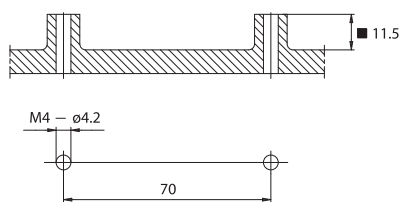


▲ Dimension without inserted lamp in the lampholder

**A08UH:** A01H lampholders assembled with spacer bracket in zinc-plated iron for RX7s cap, with “Z nom.” lamp 114,2 mm (70W) art. 111.

**A08UHP:** version with lampholders equipped with protection in LCP which covers the pressure springs (see A01HP).

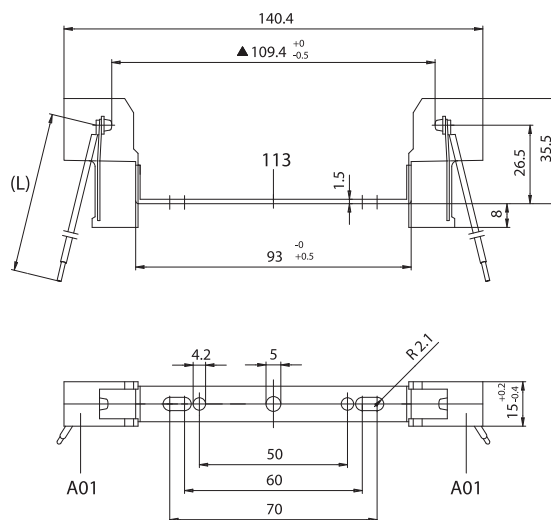
- Weight of the lampholder in standard execution: 60 g.
- Instructions to fix the lampholder on structures.



■ Min. dimension

- Fixing of the lampholder by M4 screws to be inserted in the holes of the bracket, placed on two supports with a center distance of 70 mm.

# A09H

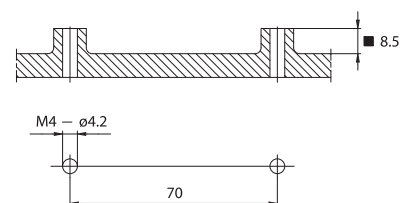


▲ Dimension without inserted lamp in the lampholder

**A09H:** A01H lampholders assembled with spacer bracket in zinc-plated iron for RX7s cap, with “Z nom.” lamp 114,2 mm (70W) art. 113.

**A09HP:** version with lampholders equipped with protection in LCP which covers the pressure springs (see A01HP).

- Weight of the lampholder in standard execution: 60 g.
- Instructions to fix the lampholder on structures.



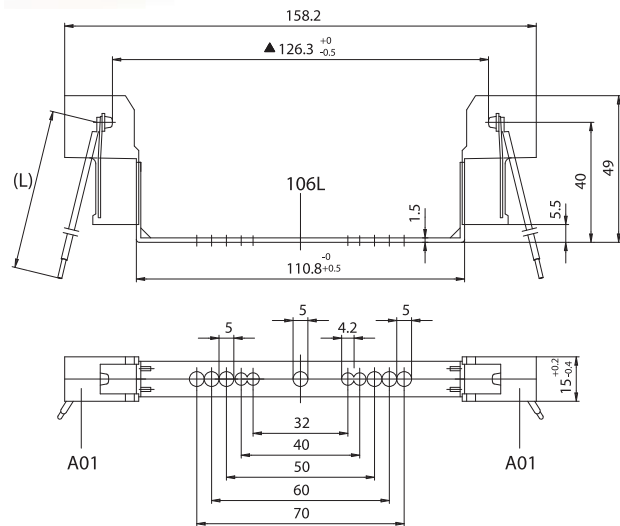
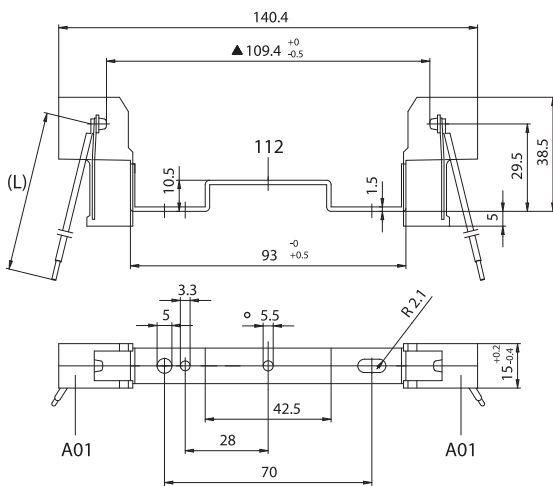
■ Min. dimension

- Fixing of the lampholder by M4 screws to be inserted in the holes of the bracket, placed on two supports with a center distance of 70 mm.

# AB8H



# A03LH



▲ Dimension without inserted lamp in the lampholder

▲ Dimension without inserted lamp in the lampholder

**AB8H:** A01H lampholders assembled with spacer bracket in zinc-plated iron for RX7s cap, with “Z nom.” lamp 114,2 mm (70W) with central hole diameter 5,5 mm art. 112.

**A03LH:** A01H lampholders assembled with spacer bracket in zinc-plated iron for RX7s cap, with “Z nom.” lamp 132,0 mm (150W) art. 106L.

**AB8HP:** version with lampholders equipped with protection in LCP which covers the pressure springs (see A01HP).

- Weight of the lampholder in standard execution: 75 g.

**AB8HA - AB8HAP:** ● with central hole diameter 3,4 mm

**AB8HB - AB8HBP:** ● with central hole M4

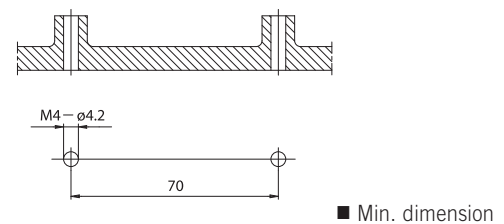
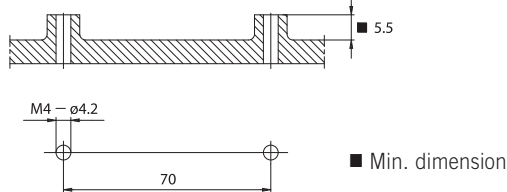
**AB8HC - AB8HCP:** ● with central hole diameter 4,5 mm

**A03LHP:** version with lampholders equipped with protection in LCP which covers the pressure springs (see A01HP).

- Weight of the lampholder in standard execution: 65 g.

- Instructions to fix the lampholder on structures.

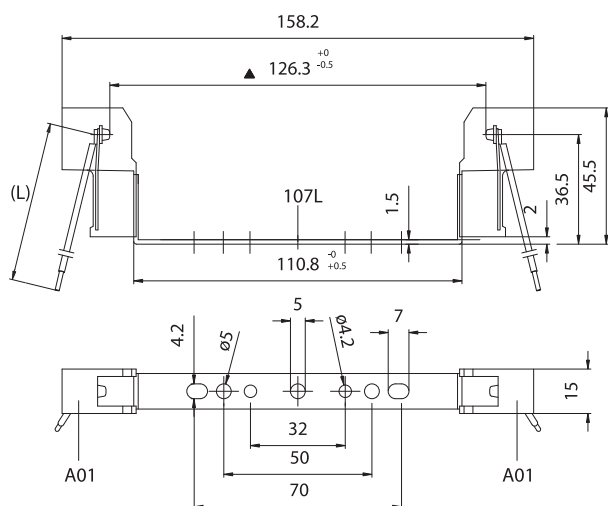
- Instructions to fix the lampholder on structures.



- Fixing of the lampholder by M4 screw (with head min. diameter 8 mm) to be inserted in the central fixing hole of the bracket, placed on a support.

- Fixing of the lampholder by M4 screws to be inserted in the holes of the bracket, placed on two supports with a center distance of 70 mm.

# A04LH

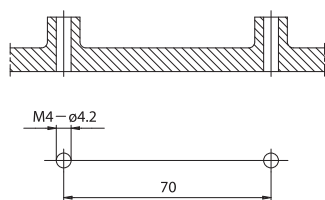


▲ Dimension without inserted lamp in the lampholder

**A04LH:** A01H lampholders assembled with spacer bracket in zinc-plated iron for RX7s cap, with “Z nom.” lamp 132,0 mm (150W) art. 107L.

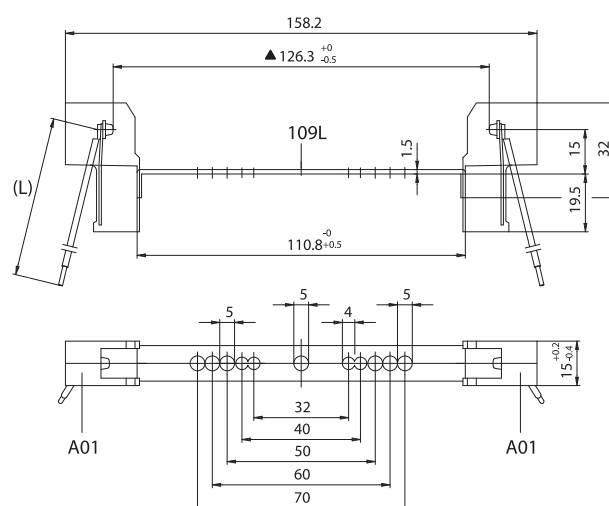
**A04LHP:** version with lampholders equipped with protection in LCP which covers the pressure springs (see A01HP).

- Weight of the lampholder in standard execution: 70 g.
- Instructions to fix the lampholder on structures.



- Fixing of the lampholder by M4 screws to be inserted in the holes of the bracket, placed on two supports with a center distance of 70 mm.

# A06LH

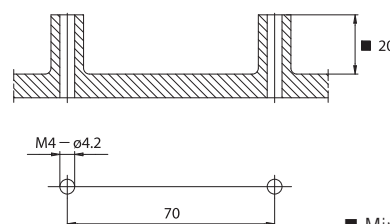


▲ Dimension without inserted lamp in the lampholder

**A06LH:** A01H lampholders assembled with spacer bracket in zinc-plated iron for RX7s cap, with “Z nom.” lamp 132,0 mm (150W) art. 109L.

**A06LHP:** version with lampholders equipped with protection in LCP which covers the pressure springs (see A01HP).

- Weight of the lampholder in standard execution: 65 g.
- Instructions to fix the lampholder on structures.



■ Min. dimension

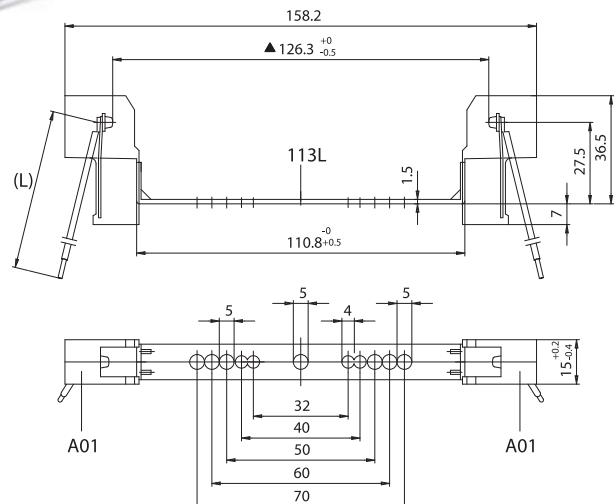
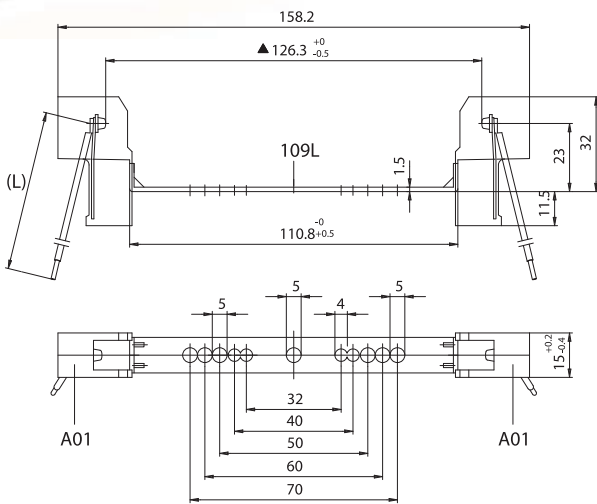
- Fixing of the lampholder by M4 screws to be inserted in the holes of the bracket, placed on two supports with a center distance of 70 mm.



# A06LUH



# A09LH



▲ Dimension without inserted lamp in the lampholder

▲ Dimension without inserted lamp in the lampholder

**A06LUH:** A01H lampholders assembled with spacer bracket in zinc-plated iron for RX7s cap, with "Z nom." lamp 132,0 mm (150W) art. 109L.

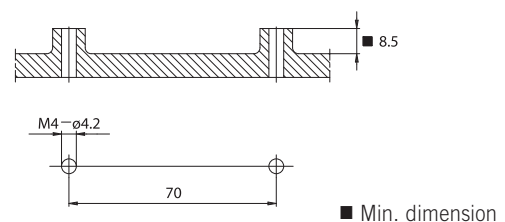
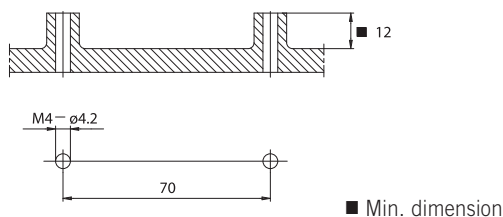
**A09LH:** A01H lampholders assembled with spacer bracket in zinc-plated iron for RX7s cap, with "Z nom." lamp 132,0 mm (150W) art. 113L.

**A06LUHP:** version with lampholders equipped with protection in LCP which covers the pressure springs (see A01HP).

**A09LHP:** version with lampholders equipped with protection in LCP which covers the pressure springs (see A01HP).

- Weight of the lampholder in standard execution: 65 g.
- Instructions to fix the lampholder on structures.

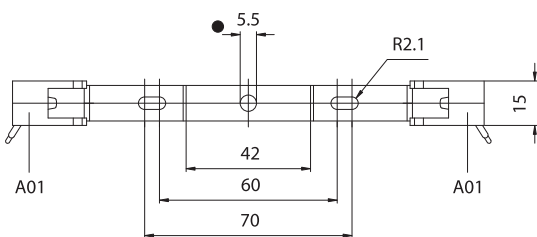
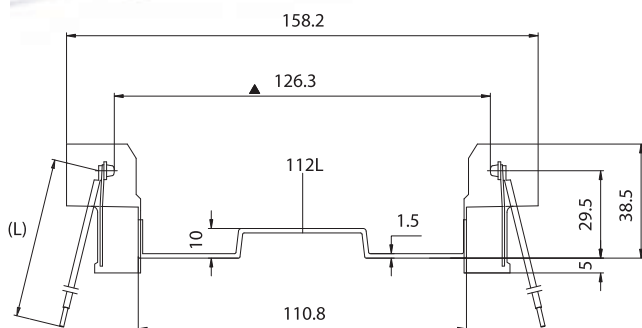
- Weight of the lampholder in standard execution: 65 g.
- Instructions to fix the lampholder on structures.



- Fixing of the lampholder by M4 screws to be inserted in the holes of the bracket, placed on two supports with a center distance of 70 mm.

- Fixing of the lampholder by M4 screws to be inserted in the holes of the bracket, placed on two supports with a center distance of 70 mm.

# AB8LH



▲ Dimension without inserted lamp in the lampholder

**AB8LH:** A01H lampholders assembled with spacer bracket in zinc-plated iron for RX7s cap, with "Z nom." lamp 132,0 mm (150W) with central hole diameter 5,5 mm art. 112L.

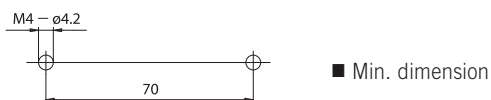
**AB8LHP:** version with lampholders equipped with protection in LCP which covers the pressure springs (see A01HP).

**AB8LHA - AB8LHAP:** ● with central hole diameter 3,4 mm

**AB8LHB - AB8LHBP:** ● with central hole M4

**AB8LHC - AB8LHCP:** ● with central hole diameter 4,5 mm

- Weight of the lampholder in standard execution: 70 g.
- Instructions to fix the lampholder on structures.



- Fixing of the lampholder by M4 screw (with head min. diameter 8 mm) to be inserted in the central fixing hole of the bracket, placed on a support.