

A10E



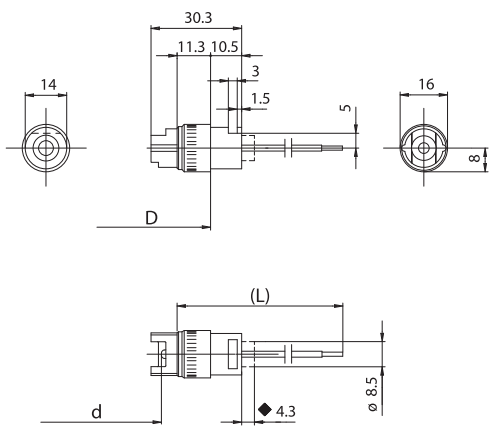
A12



Double insulation



Double insulation

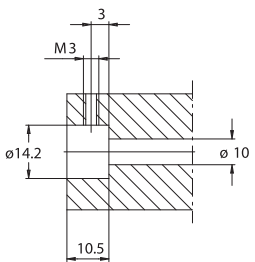


◆ Maximum jut of the steatite body during lamp insertion

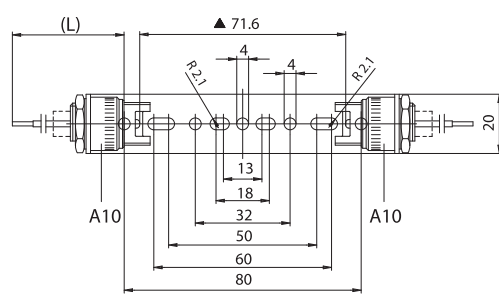
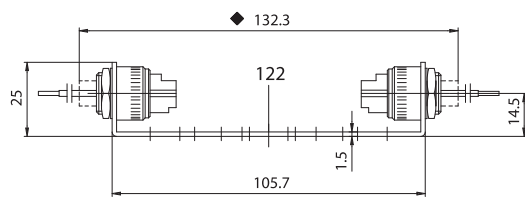
A10E: lampholder as A10, with nickel-plated brass envelope diameter 16 mm and reference plane for the fastening.

A10EM: version UR with device that blocks the lampholder body connected to the line (see A10M).

- D: fixing distance of the lampholders pairs on rigid structures:
 - 103,4 mm for lamps with R7s cap, with "Z nom." lamp 74,9 mm
 - 142,7mm for lamps with R7s cap, with "Z nom." lamp 114,2 mm
- Weight of the lampholders pair in standard execution: 30 g.
- Indications to fix the lampholder on structures.



- Fixing system of the lampholders pair by insertion in holes diameter 14,2 mm, in which lampholder stability is guaranteed screwing the M3 screws in the fore-made threads on the envelope holes (see the drawing).

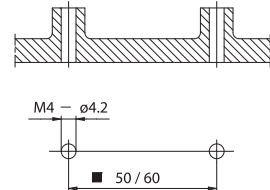


▲ Dimension without inserted lamp in the lampholder
◆ Maximum jut of the steatite body during lamp insertion

A12: A10 lampholders assembled with spacer bracket in zinc-plated iron for lamps with R7s cap with "Z nom." lamp 74,9 mm art. 122.

A12M: version UR and CSA, with device that blocks the lampholder body connected to the line (see A10M).

- Weight of the lampholder in standard execution: 65 g.
- Indications to fix the lampholder on structures.



- Dimension for supported lampholder. When lampholder is placed on a plane, it is possible to use all the bracket holes.
- Fixing of the lampholder by M4 screws to be inserted in the holes of the bracket, placed on a plane surface on two supports with a center distance of 50 - 60 mm.