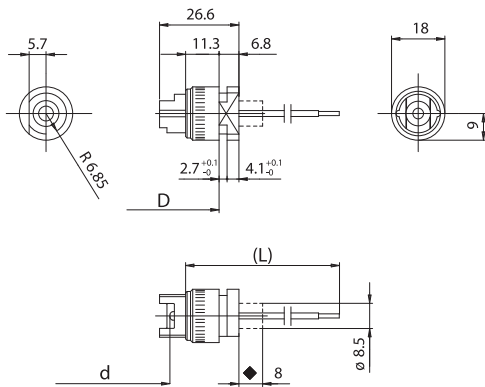
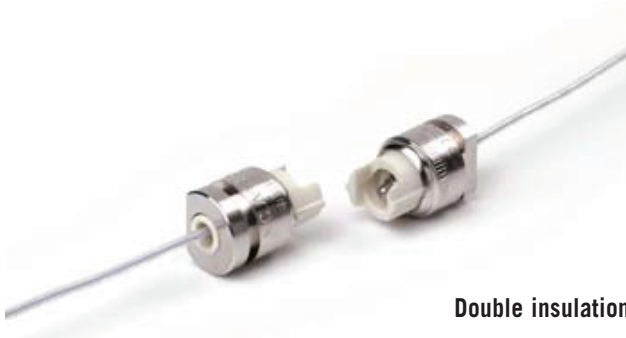


A10T

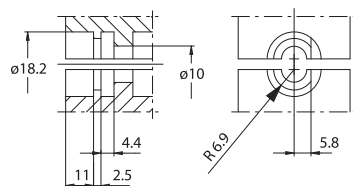


◆ Maximum jut of the steatite body during lamp insertion

A10T: lampholder as A10 with nickel-plated brass envelope with groove for coupling structures.

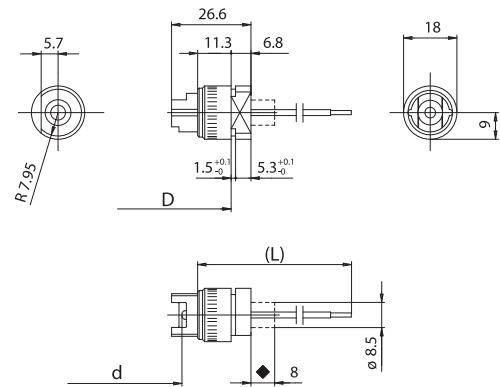
A10TM: version UR, with device that blocks the lampholder body connected to the line (see A10M).

- D: fixing distance of the lampholders pairs on rigid structures:
 - 103,4 mm for lamps with R7s cap, with "Z nom." lamp 74,9 mm
 - 142,7 mm for lamps with R7s cap, with "Z nom." lamp 114,2 mm
- Weight of the lampholders pair in standard execution: 40 g.
- Indications to fix the lampholder on structures.



- Fixing system of lampholders pair by coupling of two shells with opportune profiles, in such a way to avoid wrong assembling (see the drawing).

A10P

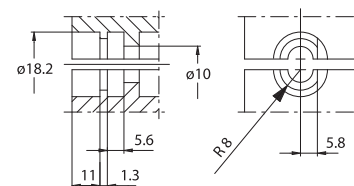


◆ Maximum jut of the steatite body during lamp insertion

A10P: lampholder as A10 with nickel-plated brass envelope with groove for coupling structures.

A10PM: version UR, with device that blocks the lampholder body connected to the line (see A10M).

- D: fixing distance of the lampholders pairs on rigid structures:
 - 103,4 mm for lamps with R7s cap, with "Z nom." lamp 74,9 mm
 - 142,7 mm for lamps with R7s cap, with "Z nom." lamp 114,2 mm
- Weight of the lampholders pair in standard execution: 40 g.
- Indications to fix the lampholder on structures.



- Fixing system of lampholders pair by coupling of two shells with opportune profiles, in such a way to avoid wrong assembling (see the drawing).