

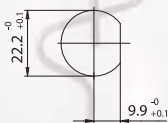
# LAMPHOLDERS FOR DISCHARGE LAMPS

## A15



**Lampholder whose creepage and clearance distances allow the use in class II fixtures with pulse peak voltage up to 5kV, with working voltage up to 500V, and in applications foreseen for the overvoltage category III, if connected with double or triple insulated cables (ref. standard EN 60598.1).**

- Porcelain body.  
Nickel-plated brass envelope diameter 24 mm with thread M22 x1, length 6 mm.  
Contacts in special nickel-plated alloy.  
Pressure springs in normalized stainless steel.  
Fixing nuts M22 x1, hexagonal 25, in nickel-plated brass.
- Weight of the lampholders pair in standard execution:  
(with cables L = 25 cm): 80 g
- D: fixing distance of the lampholders pair on rigid structures:
  - 150,0 mm for lamps with RX7s cap, with "Z nom." lamp 114,2 mm (70W)
  - 167,8 mm for lamps with RX7s cap, with "Z nom." lamp 132,0 mm (150W)
- d: distance between the contacts = D - 39,5 mm
- Instructions to fix the lampholder on structures.



- Fixing of lampholders pair by thread M22 x1 on the lampholder external envelope. The standard supply includes the 25 mm hexagonal nuts in nickel-plated brass M22 x1.  
The threaded part of the brass external envelope has a lateral milling, in order to avoid the wrong assembling of the lampholders pair.

### Lampholder:

Maximum power: **1500 W**  
 Rated voltage: **250 V**  
 Impulse voltage: **5 kV**  
 Working temperature: **T 250°C**  
 Connected cables working temperature: **T 105° ÷ 250°C**  
 In conformity to the standards: **UL 496**  
**CSA 22.2 N.43**

### Approval marks:

**cURus**

**A15M:** the lampholder, in the version cURus, may be supplied with a device that blocks the sliding of the lampholder body connected to the line (black colour polarized cable).

Single-conductor flexible connecting cables, polarized black and white, crimped to the lampholder:

| Insulation                                       | T in °C | Conduct. | Available voltages and AWG |       |
|--|---------|----------|----------------------------|-------|
|  |         |          | 600V                       | 18AWG |
| Silicone<br><i>Single insulation</i>             | 200     | CuSn     | •                          | •     |
| Silicone+glass-braid<br><i>Single insulation</i> | 200     | CuSn     | •                          | •     |
| PTFE<br><i>Single insulation</i>                 | 250     | CuNi     | •                          | •     |
| PTFE+PFA<br><i>Double insulation</i>             | 250     | CuNi     | •                          | •     |



# A15

1984



**Lampholder:**

Rated voltage:  
 Impulse voltage:  
 Rated current:  
 Working temperature:  
 Connected cables  
 working temperature:  
 Overvoltage category:  
 Protection degree (IP):  
 In conformity to the standards:  
 In conformity to the requirements  
 of the directive:

**RX7s**  
  
**500 V**  
**5 kV**  
**6 A**  
**T 250°C**  
  
**T 105°÷ 250°C**  
**III**  
**IP20**  
**EN 60838-1**  
  
**2014/35/EU**

Approval marks:

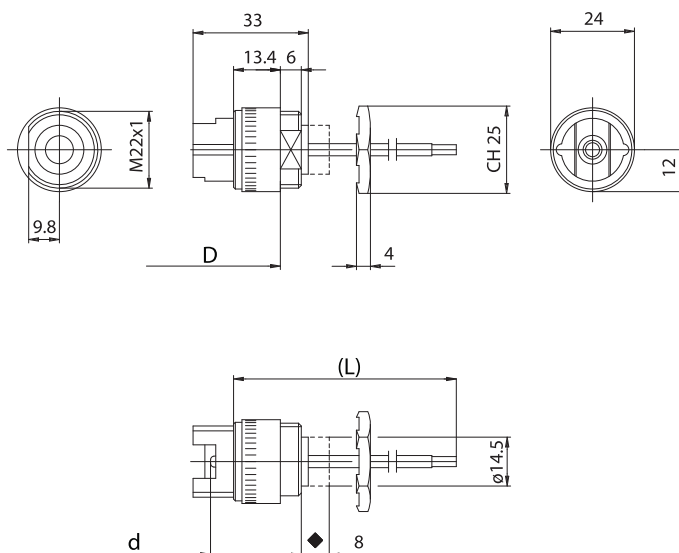
**CQC**



**Double insulation**

Single-conductor, flexible connecting cables crimped to the lampholder:

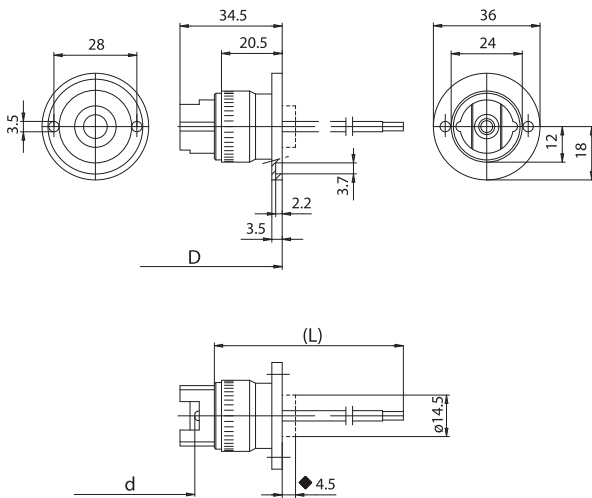
| Insulation                                     | T in °C | Conduct. | Available sections and tensions |                      |                      |                      |
|--|---------|----------|---------------------------------|----------------------|----------------------|----------------------|
|  |         |          | Pulse kV                        | 0,75 mm <sup>2</sup> | 1,00 mm <sup>2</sup> | 1,50 mm <sup>2</sup> |
| Oversize silicone<br><i>Single insulation</i>  | 180     | CuSn     | 10kV                            |                      | •                    |                      |
| Oversize silicone<br><i>Single insulation</i>  | 180     | CuSn     | 5kV                             | •                    | •                    |                      |
| Silicone+Silicone<br><i>Single insulation</i>  | 180     | CuSn     | 5kV                             | •                    | •                    |                      |
| Oversize PTFE<br><i>Single insulation</i>      | 250     | CuNi     | 5kV                             |                      | •                    |                      |
| Oversize PTFE +PFA<br><i>Double insulation</i> | 250     | CuNi     | 5kV                             |                      | •                    |                      |



◆ Maximum jut of the porcelain body during lamp insertion



# A15R

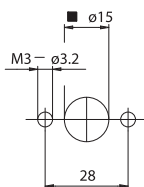


◆ Maximum jut of the porcelain body during lamp insertion

**A15R:** lampholder as A15 with envelope in nickel-plated brass with back round part, diameter 36 mm, with groove and fixing holes diameter 3,2 mm with center distance 28 mm.

**A15RM:** cURus version with device to block the body connected to the line (see A15M).

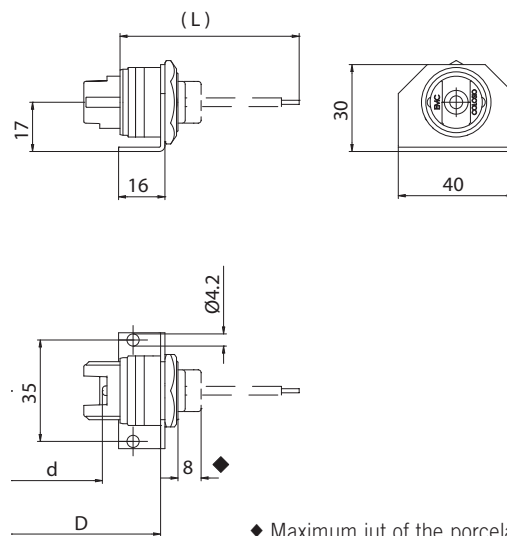
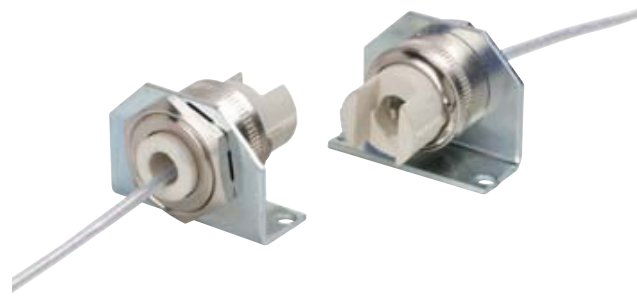
- D: fixing distance of the lampholders pair on rigid structures:
  - 169,0 mm for lamps with RX7s cap, with "Z nom." lamp 114,2 mm (70W)
  - 186,8 mm for lamps with RX7s cap, with "Z nom." lamp 132,0 mm (150W)
- d: distance between the contacts = D - 58,5 mm
- Weight of the lampholders pair in standard execution: 115 g.
- Instructions to fix the lampholder on structures.



■ Insertion hole of the porcelain body during lamp insertion

- Fixing of the lampholders pair by M3 screws, with maximum head diameter 6 mm, to be inserted in the fixing holes with center distance 28 mm.

# A15C

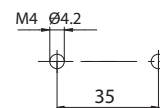


◆ Maximum jut of the porcelain body during lamp insertion

**A15C:** lampholder as A15 with zinc-plated fixing bracket, with holes diameter 4,1 mm with center distance 35 mm.

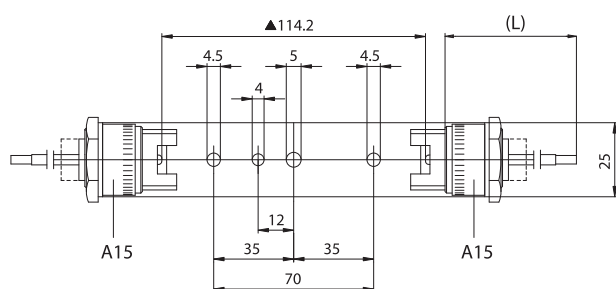
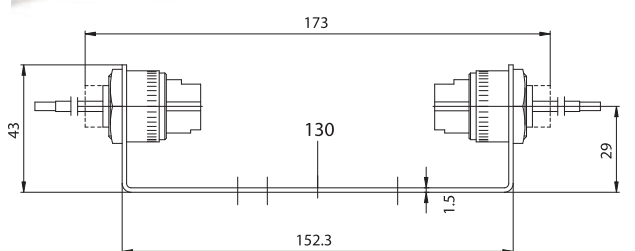
**A15CM:** cURus version with device to block the body connected to the line (see A15M).

- D: fixing distance of the lampholders pair on rigid structures:
  - 131,0 mm for lamps with RX7s cap, with "Z nom." lamp 114,2 mm (70W)
  - 149,0 mm for lamps with RX7s cap, with "Z nom." lamp 132,0 mm (150W)
- d: distance between the contacts = D - 20,5 mm
- Weight of the lampholders pair in standard execution: 120 g.
- Instructions to fix the lampholder on structures.



- Fixing of the lampholders pair by M4 screws, to be inserted in the fixing holes with center distance 35 mm.

# A16

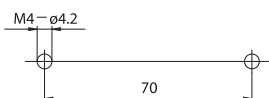


▲ Dimension without inserted lamp in the lampholder  
 ◆ Maximum jut of the porcelain body during lamp insertion

**A16:** lampholder A15 with spacer bracket in zinc-plated iron for lamps with RX7s cap, with "Z nom." lamp 114,2 mm (70W) (the spacer bracket can be also supplied unassembled, ref. art. 130).

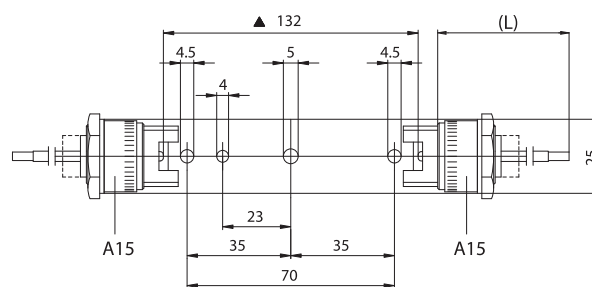
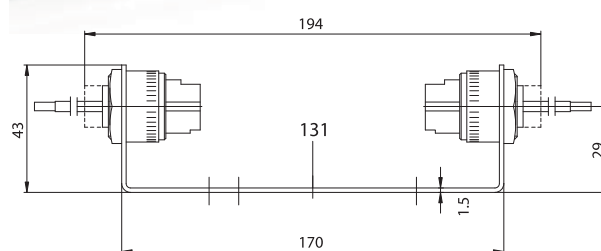
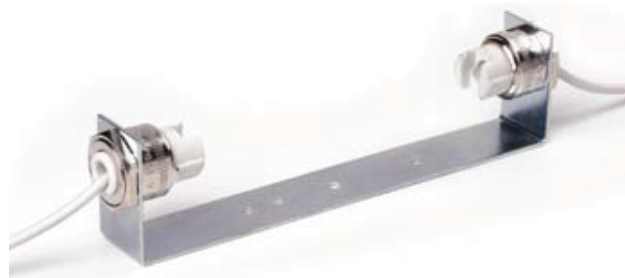
**A16M:** cURus version with device to block the body connected to the line (see A15M).

- Weight of the lampholder in standard execution: 140 g.
- Instructions to fix the lampholder on structures.



- Fixing of the lampholders pair by M4 screws to be inserted in the fixing holes of the bracket, placed on two supports with center distance 70 mm.

# A17

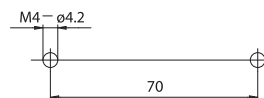


▲ Dimension without inserted lamp in the lampholder  
 ◆ Maximum jut of the porcelain body during lamp insertion

**A17:** lampholder A15 with spacer bracket in zinc-plated iron for lamps with RX7s cap, with "Z nom." lamp 132,0 mm (150W) (the spacer bracket can be also supplied unassembled, ref. art. 131).

**A17M:** cURus version with device to block the body connected to the line (see A15M).

- Weight of the lampholder in standard execution: 150 g.
- Instructions to fix the lampholder on structures.



- Fixing of the lampholders pair by M4 screws to be inserted in the fixing holes of the bracket, placed on two supports with center distance 70 mm.