

FOR NET TENSION 110 - 250V

A25

1987

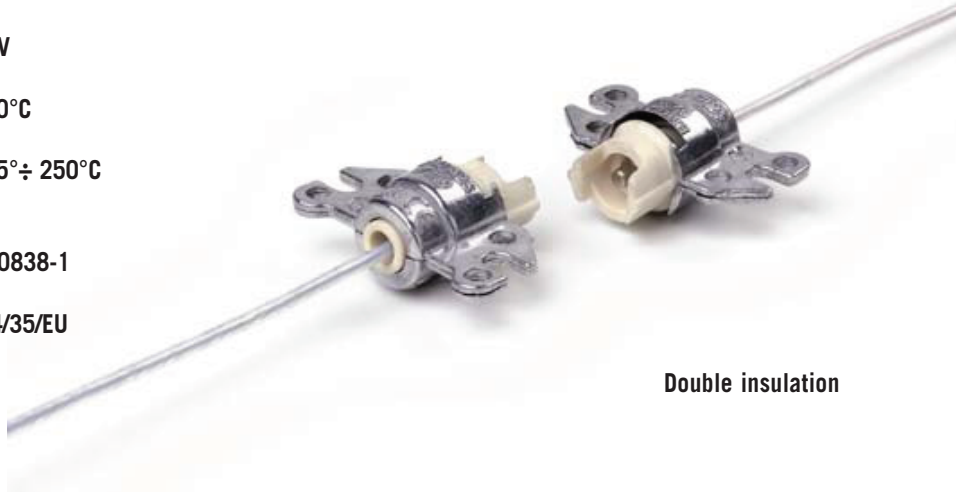


Lampholder:

Rated voltage:
Rated current:
Working temperature:
Connected cables
working temperature:
Overvoltage category:
Protection degree (IP):
In conformity to the standards:
In conformity to the requirements
of the directive:

R7s
250 V
6 A
T 300°C
T 105°÷ 250°C
III
IP20
EN 60838-1
2014/35/EU

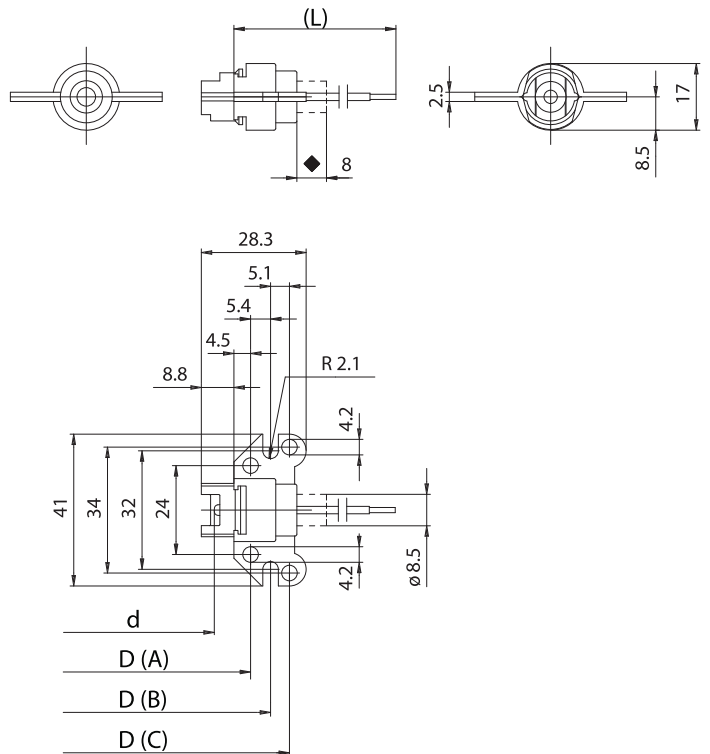
Approval marks:



Double insulation

Single-conductor flexible connecting cables
crimped to the lampholder:

Insulation	T in °C	Conduct.	Available sections in mm ²			
			0,50	0,75	1,00	1,50
Silicone <i>Single insulation</i>	180	CuSn	•	•	•	•
Silicone+Silicone <i>Double insulation</i>	180	CuSn		•	•	
Silicone+glass-braid <i>Single insulation</i>	180	CuSn	•	•	•	•
FEP <i>Single insulation</i>	180	CuSn	•	•	•	•
FEP+FEP <i>Double insulation</i>	180	CuSn	•	•	•	•
FEP+FEP+FEP <i>Triple insulation</i>	180	CuSn	•	•		
PTFE <i>Single insulation</i>	180	CuSn	•	•	•	•
PTFE <i>Single insulation</i>	250	CuNi	•	•	•	•
PTFE+PTFE <i>Double insulation</i>	250	CuNi	•	•	•	
PTFE+PFA <i>Double insulation</i>	250	CuNi		•	•	
PTFE+PFA+PFA <i>Triple insulation</i>	250	CuNi		•		
PFA <i>Single insulation</i>	260	CuNi	•	•	•	
PFA+PFA <i>Double insulation</i>	260	CuNi	•	•	•	



◆ Maximum jut of the steatite body during lamp insertion



LAMP HOLDERS FOR INCANDESCENT HALOGEN LAMPS

A25



Lampholder whose creepage and clearance distances allow the use in class II fixtures with working voltage up to 250V, if connected with double or triple insulated cables (ref. standard EN 60598.1).

Lampholder:

Maximum power:
Rated voltage:
Working temperature:
Connected cables
working temperature:
In conformity to the standards:

R7s

1500 W
250 V
T 250°C

T 105°÷ 250°C
UL 496
CSA 22.2 N.43

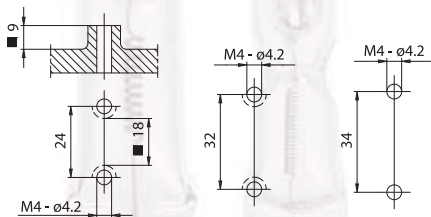
Approval marks:

cURus

- Steatite body.
Aluminium envelope.
Contacts in special nickel-plated alloy.
Springs in normalized stainless steel.
- Weight of the lampholders pair in standard execution (with cables L= 25 cm): 25 g.
- D: fixing distance of the lampholders pairs on rigid structures:

D	"Z nom." lamp 74,9 mm	"Z nom." lamp 114,2 mm	"Z nom." lamp 185,7 mm
D (A)	89,2	128,5	200,0
D (B)	100,0	139,3	210,8
D (C)	110,2	149,5	221,0
d=	71,4	110,7	182,2

- Indications to fix the lampholder on structures.



■ Min. dimension

- Fixing of the lampholders pair by M4 screws to be inserted in the chosen fixing holes (with max. head diameter of 7 mm, only if holes with center distance 24 mm are used).

Single-conductor flexible connecting cables, polarized black and white, crimped to the lampholder:

Insulation	T in °C	Conduct.	Available voltages and AWG		
			300V	600V	18AWG
Silicone <i>Single insulation</i>	200	CuSn		•	•
Silicone+glass-braid <i>Single insulation</i>	200	CuSn		•	•
FEP <i>Single insulation</i>	200	CuNi	•	•	•
FEP+FEP <i>Double insulation</i>	200	CuNi	•		•
PTFE <i>Single insulation</i>	250	CuNi	•	•	•
PTFE+PFA <i>Double insulation</i>	250	CuNi	•		•

