

# A33X

2002



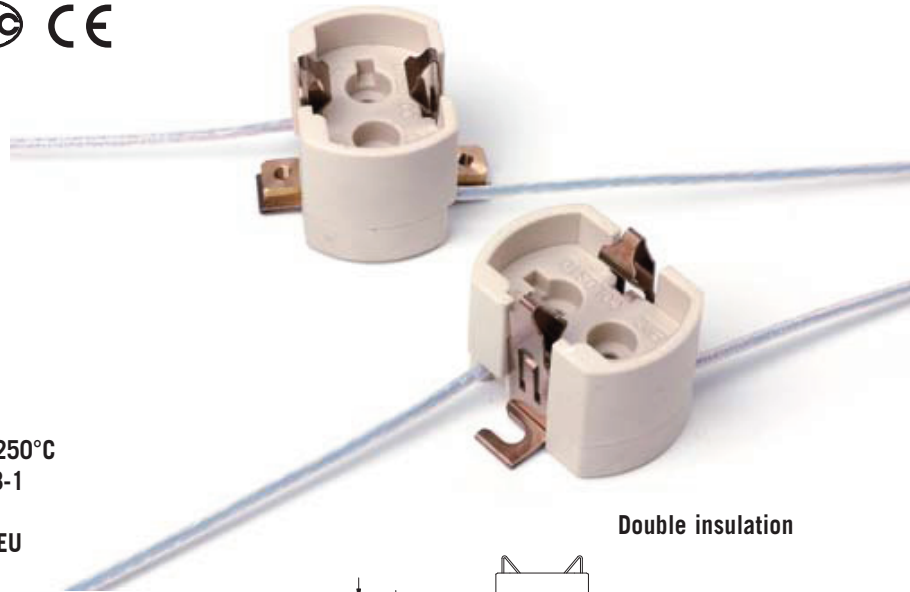
## PATENTED

### Lampholder:

**GX12-1**

Rated voltage: **500 V**  
 Impulse voltage: **5 kV**  
 Rated current: **4 A**  
 Working temperature: **T 300°C**  
 Overvoltage category: **III**  
 Connected cables working temperature: **T 150°± 250°C**  
 In conformity to the standards: **EN 60838-1**  
 In conformity to the requirements of the directive: **2014/35/EU**

Approval marks: **CQC**



**Double insulation**

**A33X:** lampholder A33X with fixing bracket with two slotted holes.

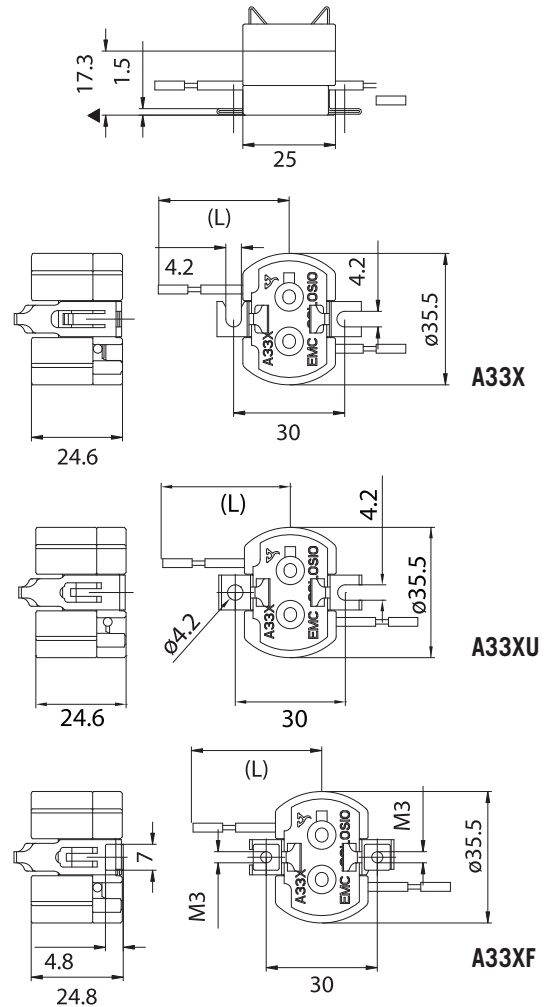
**A33XU:** lampholder as A33X with fixing bracket with hole and slotted hole.

**A33XF:** lampholder as A33X with threaded brass bushes M3 inserted in the fixing holes with center distance 30 mm.

Single-conductor, flexible connecting cables crimped to the lampholder:

Insulation	T in °C	Conduct.	Available sections and tensions			
			Pulse kV	0,75 mm <sup>2</sup>	1,00 mm <sup>2</sup>	1,50 mm <sup>2</sup>
Silicone+Silicone <i>Single insulation</i>	180	CuSn	5kV	•	•	
Oversize silicone <i>Single insulation</i>	180	CuSn	5kV	•	•	
Oversize PTFE <i>Single insulation</i>	250	CuNi	5kV		•	
Oversize PTFE +PFA <i>Double insulation</i>	250	CuNi	5kV		•	

On customer's request, the cable not subjected to the lamp starter voltage, can be supplied with basic insulation.



▲ Reference plane



# LAMPHOLDERS FOR DISCHARGE LAMPS

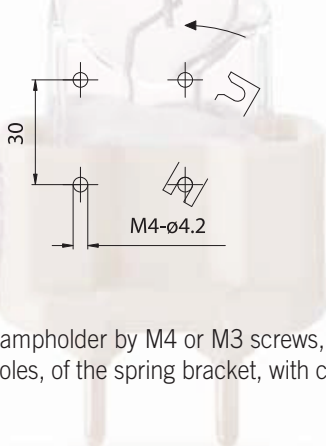
Lampholder whose creepage and clearance distances allow the use in class II fixtures with pulse peak voltage up to 5kV,  
 - or with working voltage up to 500V in applications foreseen for the overvoltage category II,  
 - or with working voltage up to 300V in applications foreseen for the overvoltage category III,  
 if connected with double or triple insulated cables (ref. standard EN 60598.1).

Solid fixing structure, in steel, independent from the ceramic body (this solves the problem of the easy breaking, during the fixing process, of the existing lampholders).  
 Furthermore, it allows a quick fixing by a bayonet system.

**NOTE:** normally, the lampholder should be fixed on plain fixing structure or on support with minimum diameter 10 mm.

- Steatite body.  
 Contacts in special alloy.  
 Steel strengthening springs for the contacts.  
 Lamp retaining spring in stainless steel.
- Weight of the lampholder in standard execution (with cables L=25 cm): 50 g

- Instructions to fix the lampholder on structures.



- Fixing of the lampholder by M4 or M3 screws, to be inserted in the fixing holes, of the spring bracket, with center distance 30 mm.

## A33X



### PATENTED

Lampholder:	GX12-1
Maximum power:	660 W
Rated voltage:	600 V
Impulse voltage:	5 kV
Working temperature:	T 250°C
Connected cables working temperature:	T 105° ÷ 250°C
In conformity to the standards:	UL 496 CSA 22.2 N.43
Approval marks:	cURus

Single-conductor, flexible connecting cables crimped to the lampholder:

Insulation	T in °C	Conduct.	Available voltages and AWG	
			600V	18AWG
Silicone Single insulation	200	CuSn	•	•
Silicone+glass-braid Single insulation	200	CuSn	•	•
PTFE Single insulation	250	CuNi	•	•
PTFE+PFA Double insulation	250	CuNi	•	•

