

# LAMPHOLDERS FOR DISCHARGE LAMPS

Lampholder whose creepage and clearance distances allow the use in class II fixtures with pulse peak voltage up to 5kV, working tension up to 500V,

- or in applications foreseen for the overvoltage category II,  
- or in applications foreseen for the overvoltage category III,  
if there aren't metallic parts within a diameter of 35 mm, from the fixing base of the lampholder, if connected with double or triple insulated cables (ref. standard EN 60598.1).

Even though this lampholder has creepage and clearances distances in conformity to the requirements of the class II, with working tension up to 500 V and pulse peak voltage up to 5 kV (if connected with double insulated cables), since the external envelope in metal is in contact with the cap of the lamp also in metal, it should be verified that possible other metallic accessible parts of the lighting fixture, close either to the external envelope of the lampholder or to the metallic part of the lamp cap, it should be spaced following the requirements of the standard EN 60598-1.

**Solid fixing structure, in diecast aluminium.**

**External envelope with open sectors that allow, especially during the replacement of the lamp, to see and verify easily the correct position of the lamp (the lamp has the two polarized pins and it is not easy to identify their difference).**

**Perfect centring of the lamp in the lampholder, in all the possible applications in the lighting fixtures, thanks also to the three leaf springs at 120° provided on the envelope.**

**Versatile possibility to chose different center fixings, both in the standard version of the lampholder (fixing with center distance 51 and 52 mm) and in the version with the accessories (fixing with center distance 18, 30, 34, 38 and 42 mm).**

**Possibility to insert an eyelet terminal for M4 screws, connected to the ground conductor, under the head of one of the fixing screws, using the foreseen opening of the external envelope of the lampholder.**

**Possible exit of the cables central-back or lateral.**

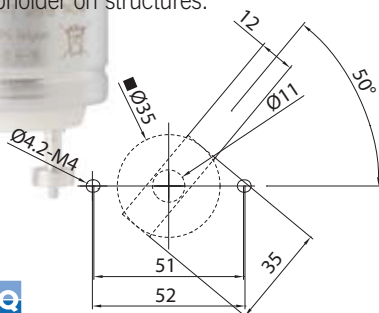
**Attention: consider 2 cm of cables loss in lampholder with cables exit from the central back side; consider 3 cm of cables loss in lampholder with cables exit from the lateral side.**

**Note: on request, it is also possible to supply the lampholder with already inserted cables (ref. A91 for the version with the back exit, ref. A91L for the version with the lateral exit).**

- Steatite body.  
External envelope in diecast aluminium.  
Contacts in special silver-plated alloy.  
Push-in clamps built in the contacts.  
Springs for the positioning of the lamp in stainless steel.  
Leaf springs for the centering of the lamp in stainless steel.  
Cables exit from the back side or lateral side.

- Weight: 90 g.
- Instruction to fix the lampholder on structures.

- Dimension for class II applications for overvoltage category III
- Suggested minimum dimension for cables passage (if necessary)



## A91



**PATENTED**

**Lampholder:**

**PGZ12**

Maximum power:

**660 W**

Rated voltage:

**600 V**

Impulse voltage:

**5 kV**

Working temperature:

**T 250°C**

Type of clamps to connect the cables:

**SPRING CLAMPS  
(push-in insertion)**

Clamps connecting capacity:

**18 AWG**

In conformity to the standards:

**UL 496**

**CSA 22.2 N.43**

Approval marks:

**cURus**

Single-conductor flexible connecting cables which could be connected to the lampholder (arranged with crimped end-terminals):

Insulation	T in °C	Conduct.	Available voltages and AWG			
			600V	18AWG	16AWG	14AWG
Silicone Single insulation	200	CuSn	•	•	•	
Silicone+glass-braid Single insulation	200	CuSn	•	•	•	
PTFE Single insulation	250	CuNi	•	•	•	
PTFE+PFA Double insulation	250	CuNi	•	•	•	

Attention: the cables connected to this lampholder must not be accessible during the normal replacement operations of the lamp, in the finished product (if accessible, a cable-clamp device must be provided).

• Fixing of the lampholder:

- with two M4 screws to be inserted in the slotted fixing holes with center distance 51 or 52 mm;
- inserting two M4 nuts in the hexagonal seats foreseen on the envelope and screwing, using a center distance 52 mm, two M4 screws from the back part of the lampholder itself;
- using the fixing plate presented in the following pages.

# A91

2008



### PATENTED

#### Lampholder:

Rated voltage:  
 Impulse voltage:  
 Rated current:  
 Working temperature:  
 Type of clamps to connect the cables:

Clamps connecting capacity:  
 Overvoltage category:  
 Protection degree (IP):  
 In conformity to the standards:  
 In conformity to the requirements of the directive:

Approval marks:

PGZ12

500 V  
 5 kV  
 4 A  
 T 280°C

**SPRING CLAMPS**  
 (push-in insertion)

0,75 ÷ 1,00 mm<sup>2</sup>  
 III  
 IP20  
 EN 60838-1

2014/35/EU

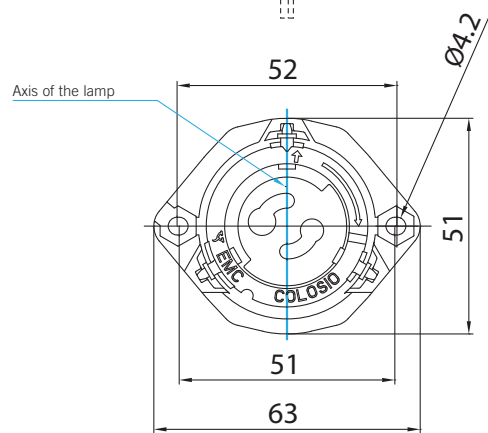
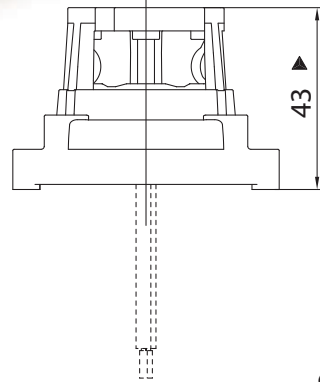
CQC



Single-conductor flexible connecting cables which could be connected to the lampholder (arranged with crimped end-terminals):

Insulation	T in °C	Conduct.	Available sections and tensions			
			Pulse kV	0,75 mm <sup>2</sup>	1,00 mm <sup>2</sup>	1,50 mm <sup>2</sup>
Silicone+Silicone <i>Single insulation</i>	180	CuSn	5kV	•	•	
Oversize silicone <i>Single insulation</i>	180	CuSn	5kV	•	•	
Silicone+Silicone + Glass-braid <i>Single insulation</i>	180	CuSn	5kV	•	•	
Oversize PTFE <i>Single insulation</i>	250	CuNi	5kV		•	
Oversize PTFE+PFA <i>Double insulation</i>	250	CuNi	5kV		•	

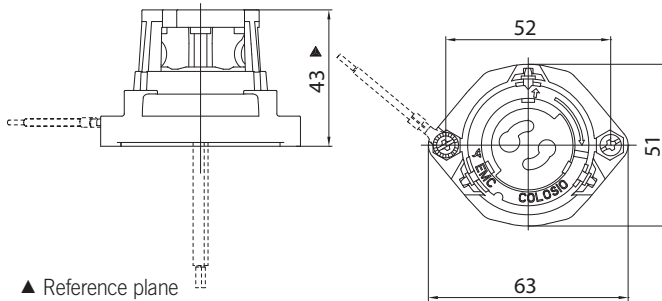
On customer's request, the cable not subjected to the lamp starter voltage, can be supplied with basic insulation.



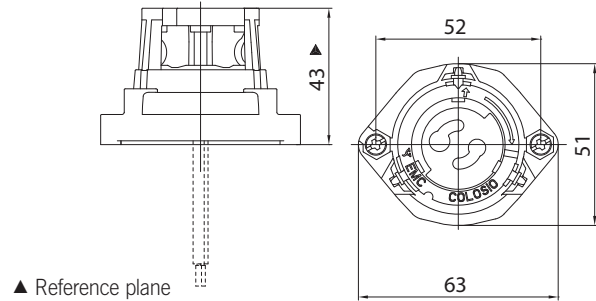
▲ Reference plane



# A91DT



# A91D

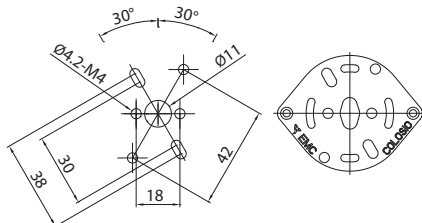


**A91DT:** lampholder A91 supplied with flat support plate, in zinc-plated iron, with fixing holes diameter 4,2 mm with center distance 18, 30, 34, 38 and 42 mm (art. 958). This version is helpful when there is the need to use the structure of the envelope of the lampholder to fix the ground cable.

*Note 1: the support plate 958 is supplied not assembled to the lampholder A91. The supplying code foresees also one screw M4 x 6 mm (art. 538), one screw M4 x 7 mm (art. 532) and one tab washer (art. 531) for the fixing of the lampholder A91 on the plate.*

*Note 2: in this configuration the lampholder cannot be used for applications in double insulation.*

- Weight: 95 g.
- Instruction to fix the lampholder on structures.



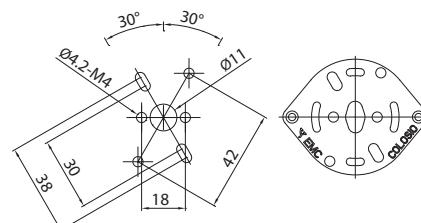
- Fixing of the plate 958 using the holes diameter 4,2 mm with center distance 18 or 30 or 34 or 38 or 42 mm.
- Fixing of the lampholder to plate 958 using the two M4 screws (already included) to be inserted in the holes of the lampholder with center distance 52 mm.

**A91D:** lampholder A91 supplied with flat support plate, in zinc-plated iron, with fixing holes diameter 4,2 mm with center distance 18, 30, 34, 38 and 42 mm (art. 958).

*Note 1: the support plate 958 is supplied not assembled to the lampholder A91. The supplying code foresees also the two screws M4 x 6 mm (art. 538) for the fixing of the lampholder A91 on the plate.*

*Note 2: in this configuration the lampholder cannot be used for applications in double insulation.*

- Weight: 95 g.
- Instruction to fix the lampholder on structures.

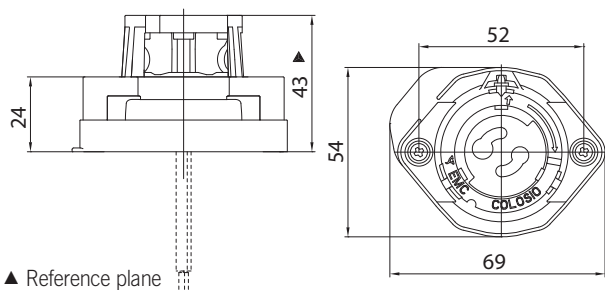


- Fixing of the plate 958 using the holes diameter 4,2 mm with center distance 18 or 30 or 34 or 38 or 42 mm.
- Fixing of the lampholder to plate 958 using the two screws M4 x 6 mm (already included) to be inserted in the holes of the lampholder with center distance 52 mm.

# A91C



Double insulation



▲ Reference plane

**A91C:** lampholder A91 supplied with insulating accessories, in PPS T240°C (T200°C and used with an impulsive tension up to 4 kV, for the cURus version), with fixing holes diameter 4,2 mm with center distances 18, 30, 34, 38 and 42 mm.

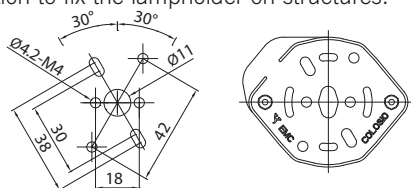
Solution for applications in double insulation when there is the need to fix the lampholder with center distances 18, 30, 34, 38 or 42 mm on metallic fixing structures.

Attention also in this application that, since the external envelope in metal is in contact with the cap of the lamp also in metal, it should be verified that possible other metallic accessible parts of the lighting fixture, close either to the external envelope of the lampholder or to the metallic part of the lamp cap, it should be spaced following the requirements of the standard EN 60598-1.

*Note 1: the accessories set, base art. 959C, carter cable-guide art. 957 and the screws covers art. 960, are supplied not assembled to the lampholder. The supplying code foresees also two flat washers to be put under the head of the screws (art. 661) and two self-threading screws for plastic 3 x 9 mm (art. 652) for the fixing of the lampholder A91 to the insulating base.*

*Note 2: the reference plane of the lamp, also in this version with the insulating accessories, remains the same of the standard version (43 mm).*

- Weight: 100 g.
- Instruction to fix the lampholder on structures.

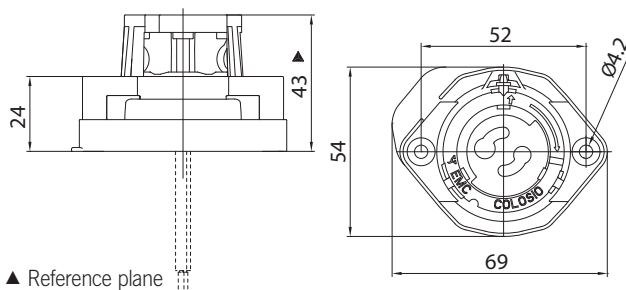


- Fixing of the insulating base 959C using the holes diameter 4,2 mm with center distance 18 or 30 or 34 or 38 or 42 mm.
- Fixing of the lampholder to the insulating base 959C using the two self-threading screws for plastic 3 x 9 mm (already included) to be inserted in the holes of the lampholder with center distance 52 mm, positioning the two flat washers under the head of the screws.

# A91P



Double insulation



▲ Reference plane

**A91P:** lampholder A91 supplied with insulating accessories, in PPS T240°C (T200°C and used with an impulsive tension up to 4 kV, for the cURus version), with fixing holes diameter 4,2 mm with center distance 52 mm.

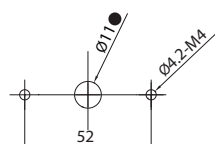
Solution for applications in double insulation when the fixing structure has metal parts within a diameter 11 mm from the support base of the lampholder.

Attention also in this application that, since the external envelope in metal is in contact with the cap of the lamp also in metal, it should be verified that possible other metallic accessible parts of the lighting fixture, close either to the external envelope of the lampholder or to the metallic part of the lamp cap, it should be spaced following the requirements of the standard EN 60598-1.

*Note 1: the accessories set, base art. 959P, carter cable-guide art. 957 and the screws covers art. 960, are supplied not assembled with the lampholder.*

*Note 2: the reference plane of the lamp, also in this version with the insulating accessories, remains the same of the standard version (43 mm).*

- Weight: 100 g.
- Instruction to fix the lampholder on structures.



● Suggested minimum dimension for cables passage (if necessary)

- Fixing of the lampholder using two M4 screws to be inserted in the fixing holes with center distance 52 mm.