

# CONNECTING DEVICES

## M132-



Type:

**PROTECTED JUNCTION BOX  
WITH 2 OR 3 POLES**

Rated voltage:

**450 V**

Rated current:

**24 A**

Working temperature:

**T 85°C**

Type of clamps to

connect the cables:

**SCREW CLAMPS**

Clamps connecting capacity:

**0,50 ÷ 2,50 mm<sup>2</sup>**

Protection degree (IP):

**IP44** (for version with gasket)

In conformity to the standards:

**EN 60998-1** and

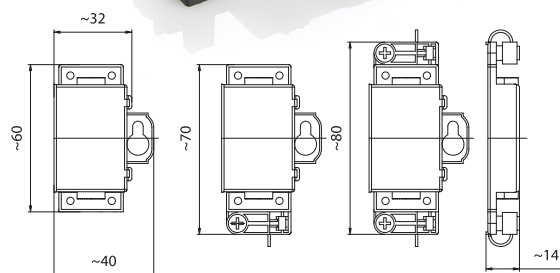
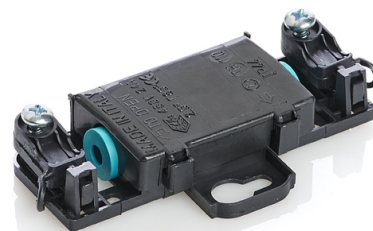
**EN 60335** (for the cable clamp)

In conformity to the requirements  
of the directive:

**2014/35/EU**

Approval marks:

**ENEC 03**



- Protected junction box with 2 or 3 poles:
  - envelope in PA66, black for the 3-pole versions and white for the 2-pole versions.
  - bush screw clamps, in nickel-plated brass, with slot screw in zinc-plated iron.
  - gasket in thermoplastic vulcanised TPE rubber with hole for cables with diameter from 5 to 10 mm (only for version M132G-/-).
  - cable clamp device with thread-forming screw (accessories).
- Device suitable to connect lighting fixtures to the power net, which grants an high protection degree and with the possibility to have the double cable clamp device, suitable in applications where the junction box is not fixed or where it is necessary to grant the safety of the cable.
- The cable clamp device can be connected to multi-conductor cables with external diameter between 5 and 10 mm, arranged with unsheathing 22 mm and stripping 6 mm or crimped with end-terminal. In case of connection to single-conductor cables is available, if necessary, the gasket with blind hole (ref. art. M132C-/-).

**M132G0/3:** junction box with 3 poles, with gaskets, without cable clamp devices, without fixing hole.

**M132G0/2:** junction box as above with 2 poles.

**M132G1/3:** junction box with 3 poles, with gaskets, with one cable clamp device, without fixing hole.

**M132G1/2:** junction box as above with 2 poles.

**M132G2/3:** junction box with 3 poles, with gaskets, with two cable clamp devices, without fixing hole.

**M132G2/2:** junction box as above with 2 poles.

- Snap-in fixing on structures with thickness 1,0 - 1,5 mm arranged with holes with diameter 5 mm with center distance 13 mm or by screw insertion in the holes diameter 3,2 mm

**M132F0/3:** junction box with 3 poles, with gaskets, without cable clamp devices, with fixing hole.

**M132F0/2:** junction box as above with 2 poles.

**M132F1/3:** junction box with 3 poles, with gaskets, with one cable clamp device, with fixing hole.

**M132F1/2:** junction box as above with 2 poles.

**M132F2/3:** junction box with 3 poles, with gaskets, with two cable clamp devices, with fixing hole.

**M132F2/2:** junction box as above with 2 poles.

- Fixing by lateral hole diameter 10 mm.

