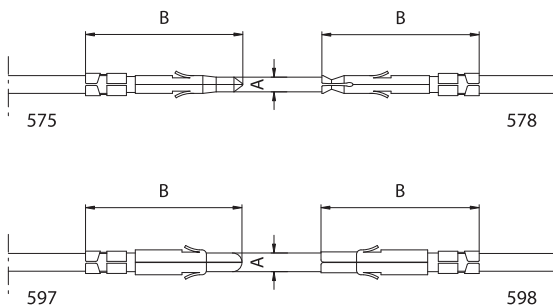


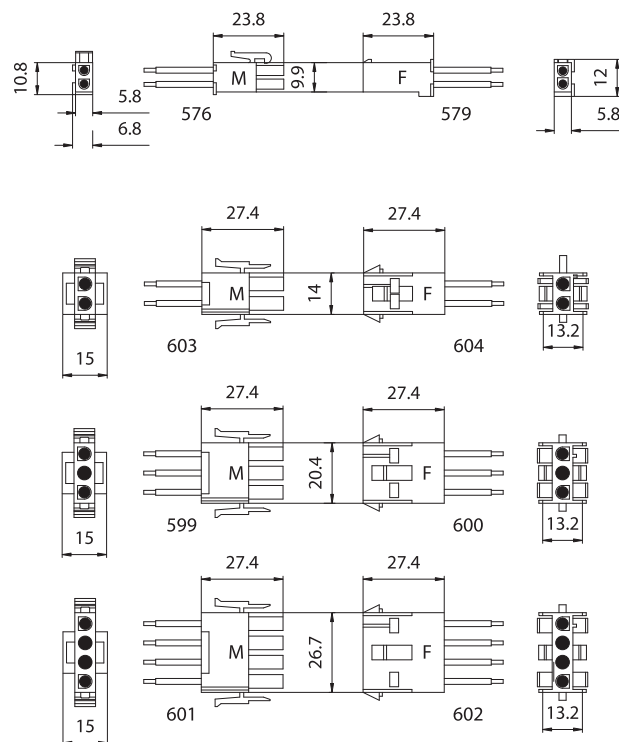
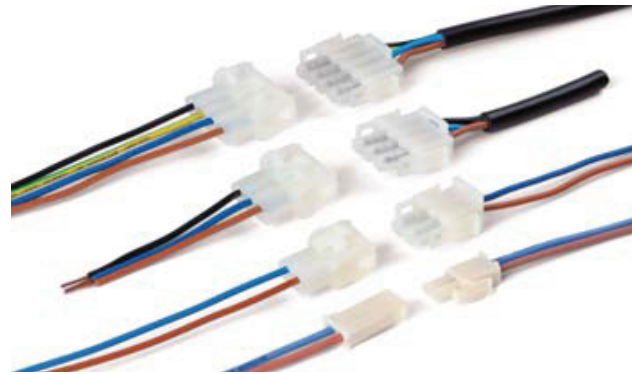
CABLES TERMINALS



- Tinned brass, cylindrical terminals, plug male and socket female, for connections which is possible to connect to all the cables listed in "Section 9".

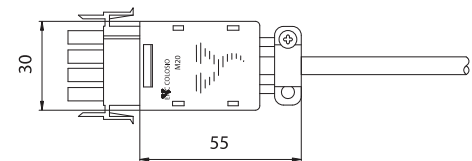
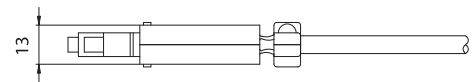
Art.	Type	Contact Ø (A)	Lenght (B)	Retention system	Material thickness	Current capacity
575	male	Ø1,7	17,6	hold-teeth	0,25	5A
578	female	Ø1,7	17,6	hold-teeth	0,25	5A
597	male	Ø2,1	20,5	hold-teeth	0,25	10A
598	female	Ø2,1	20,0	hold-teeth	0,25	10A

CONNECTORS

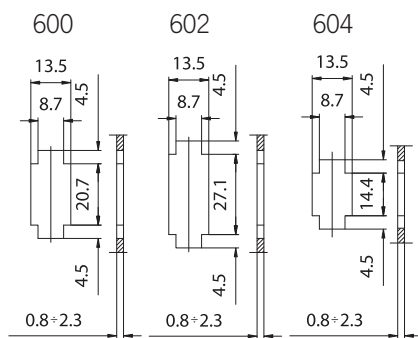


- Polarized connector/housing, plug male and socket female, in neutral PA6 V2.

HOUSINGS COVER



• Fixing scheme



- **M20:** Protection cover with cable-clamp, in PA66, for 3 ways plug housing article 599 and 4 ways plug housing article 601.
- Suitable to block double insulated cables from section 2 x 0.75 mm² to section 4 x 1,00 mm².
- Weight: 8 g.

Art.	Type M-F	For art.	Ways nr.	Dimensions mm	Fixing
576	M male	575	2	6,2x10,2x24,8	free
579	F female	578	2	6,2x12x23,8	free
599	M male	597 - 598	3	15x20,4x27,4	free
600	F female	597 - 598	3	13,2x20,4x27,4	to fix in panels
601	M male	597 - 598	4	15x26,7x27,4	free
602	F female	597 - 598	4	13,2x26,7x27,4	to fix in panels
603	M male	597 - 598	2	15x14x27,4	free
604	F female	597 - 598	2	13,2x26,7x27,4	to fix in panels

Note: the cover may be supplied already assembled on cables with plug housings 599 or 601.