

# KNIFE SWITCHES - DISCONNECTING DEVICES

## M26-

2011



Type:	<b>3 POLES KNIFE SWITCH (6 POLES KNIFE SWITCH ref. M26S-)</b>
Rated voltage:	<b>400 V AC (300 V DC)</b>
Impulse voltage:	<b>5 kV</b>
Rated current:	<b>20 A AC (14 A DC)</b>
Resistance to surface currents:	<b>TK 175</b>
Working temperature:	<b>T 120°C (*T240°C)</b>
Insulation class:	<b>II</b>
Type of clamps to connect the cables:	<b>SCREW CLAMPS</b>
Clamps connecting capacity:	<b>0,75 - 2,50 mm<sup>2</sup></b>
Overvoltage category:	<b>III</b>
Protection degree (IP):	<b>IP20</b>
In conformity to the standards:	<b>EN60598-1</b>
In conformity to the requirements of the directive:	<b>2014/35/EU</b>
Approval marks:	<b>CSv - IMQ</b>



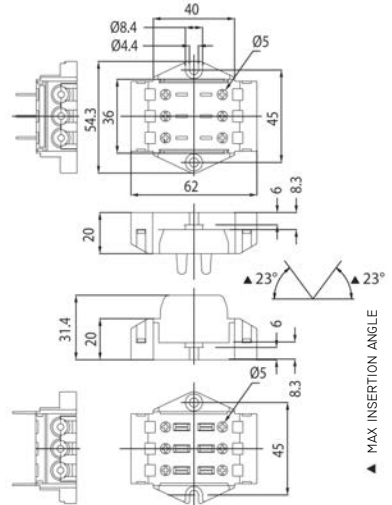
- M26:** 3 poles knife-switch with body in PA66 and working temperature T120°C.
- \*M26H:** 3 poles knife-switch with body in LCP and working temperature T240°C.
- M26S:** 6 poles knife-switch (6 poles IN + 6 poles OUT) with body in PA66 and working temperature T120°C.
- \*M26SH:** 6 poles knife-switch (6 poles IN + 6 poles OUT) with body in LCP and working temperature T240°C.

- Body in black thermoplastic material PA66 25% G.F. - V0 (LCP for the version T240°C).  
Contacts in nickel-plated copper alloy.  
Reinforcing spring for the contacts in steel Aisi 301.  
Bush-clamps with screw with combined slot+cross head, for cables from 0,75 mm<sup>2</sup> to 2,50 mm<sup>2</sup>.  
Leaf for the protection of the strands of the core, inserted in the bush.
- Weight: 125 g.

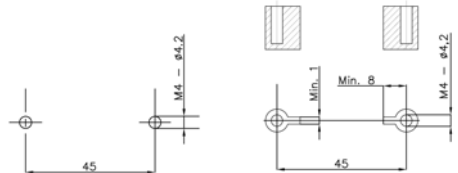
*Note 1: is possible to set this model of knife-switch according to the wished wiring for the customer, so that less components are needed. Here below the available settings:*

- M26 e M26H, standard version,**  
- nr. 6 bushes in the female part (3 poles IN + 3 poles OUT) and  
- nr. 6 bushes in the male part (3 + 3 poles OUT).
- M26 MF e M26H MF,**  
- nr. 6 bushes only in the female part (3 poles IN + 3 poles OUT).
- M26 MM e M26H MM,**  
- nr. 3 bushes in the female part (3 poles IN) and  
- nr. 3 bushes in the male part (3 poles OUT).
- M26 MD e M26H MD,**  
- nr. 6 bushes in the female part (3 poles IN + 3 poles OUT) and  
- nr. 3 bushes in the male part (3 poles OUT).
- M26S e M26SH, 6 poles special version,**  
- nr. 6 bushes in the female part (6 poles IN) and  
- nr. 6 bushes in the male part (6 poles OUT).

*Note 2: to tighten the clamps screw, use a screwdriver with max diameter 5 mm (screw tightening torque from 0,8 to 1,5 Nm).*



- Instruction to fix the knife-switch on structures



- Fixing of the knife-switch using the holes diameter 4,2 mm with center distance 45 mm.

In case of fixing of the knife-switch on columns, foresee a support area with a width of at least 1 mm at a distance of at least 8 mm towards the fixing hole.

*Note 3: for this knife-switch are available also a series of accessories as a cord-grip and cable-guide. These versions are described at page 707.*

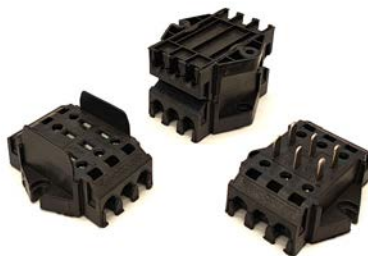
# KNIFE SWITCHES - DISCONNECTING DEVICES

## M26-

2011



Type:	<b>3 POLES KNIFE SWITCH (6 POLES KNIFE SWITCH ref. M26S-)</b>
Rated voltage:	<b>300 V</b>
Impulse voltage:	<b>5 kV</b>
Rated current:	<b>17 A</b>
Working temperature:	<b>T 120°C (*T220°C)</b>
Type of clamps to connect the cables:	<b>SCREW CLAMPS</b>
Clamps connecting capacity:	<b>18 - 12 AWG</b>
In conformity to the standards:	<b>UL1059 CSA C22.2 No.158-10</b>
Approval marks:	<b>cURus</b>



**M26:** 3 poles knife-switch with body in PA66 and working temperature T120°C.

**\*M26H:** 3 poles knife-switch with body in LCP and working temperature T220°C

**M26S:** 6 poles knife-switch (6 poles IN + 6 poles OUT) with body in PA66 and working temperature T120°C.

**\*M26SH:** 6 poles knife-switch (6 poles IN + 6 poles OUT) with body in LCP and working temperature T220°C.

- Body in black thermoplastic material PA66 25% G.F. - V0 (LCP for the version T220°C).  
Contacts in nickel-plated copper alloy.  
Reinforcing spring for the contacts in steel Aisi 301.  
Bush-clamps with screw with combined slot+cross head, for cables from 18 to 12 AWG.  
Leaf for the protection of the strands of the core, inserted in the bush.
- Weight: 125 g.

*Note 1: is possible to set this model of knife-switch according to the wished wiring for the customer, so that less components are needed. Here below the available settings:*

**M26 e M26H, standard version,**

- nr. 6 bushes in the female part (3 poles IN + 3 poles OUT) and
- nr. 6 bushes in the male part (3 + 3 poles OUT).

**M26 MF e M26H MF,**

- nr. 6 bushes only in the female part (3 poles IN + 3 poles OUT).

**M26 MM e M26H MM,**

- nr. 3 bushes in the female part (3 poles IN) and
- nr. 3 bushes in the male part (3 poles OUT).

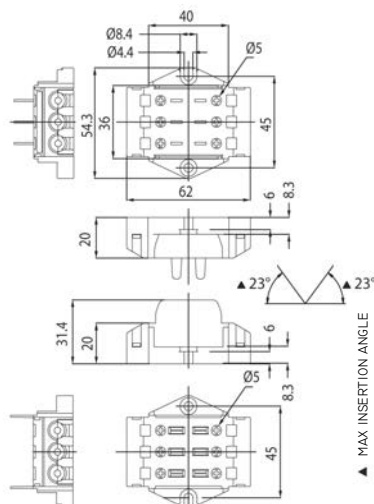
**M26 MD e M26H MD,**

- nr. 6 bushes in the female part (3 poles IN + 3 poles OUT) and
- nr. 3 bushes in the male part (3 poles OUT).

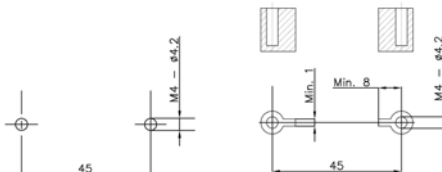
**M26S e M26SH, 6 poles special version,**

- nr. 6 bushes in the female part (6 poles IN) and
- nr. 6 bushes in the male part (6 poles OUT).

*Note 2: to tighten the clamps screw, use a screwdriver with max diameter 5 mm (screw tightening torque from 0,8 to 1,5 Nm).*



- Instruction to fix the knife-switch on structures



- Fixing of the knife-switch using the holes diameter 4,2 mm with center distance 45 mm.

In case of fixing of the knife-switch on columns, foresee a support area with a width of at least 1 mm at a distance of at least 8 mm towards the fixing hole.

*Note 3: for this knife-switch are available also a series of accessories as a cord-grip and cable-guide. These versions are described at page 707.*

