

KNIFE SWITCHES - DISCONNECTING DEVICES

M26B-

2011



Type: **2 POLES KNIFE SWITCH**

Rated AC voltage: **400 V AC (300 V DC)**
 Impulse voltage: **5 kV**
 Rated AC current: **20 A AC (14 A DC)**
 Resistance to surface currents: **TK 175**
 Working temperature: **T 120°C (*T240°C)**
 Insulation class: **II**
 Type of clamps to connect the cables: **SCREW CLAMPS**
 Clamps connecting capacity: **0,75 - 2,50 mm²**
 Overvoltage category: **III**
 Protection degree (IP): **IP20**
 In conformity to the standards: **EN60598-1**
 In conformity to the requirements of the directive: **2014/35/CE**

Approval marks: **CSv - IMQ**

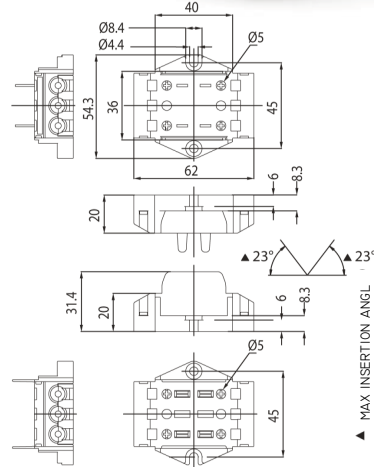
M26B: 2 poles knife-switch with body in PA66 and working temperature T120°C.
***M26BH:** 2 poles knife-switch with body in LCP and working temperature T240°C.

- Body in black thermoplastic material PA66 25% G.F. - VO (LCP for the version T240°C).
 Contacts in nickel-plated copper alloy.
 Reinforcing spring for the contacts in steel Aisi 301.
 Bush-clamps with screw with combined slot+cross head, for cables from 0,75 mm² to 2,50 mm².
 Leaf for the protection of the strands of the core, inserted in the bush.
- Weight: 110 g.

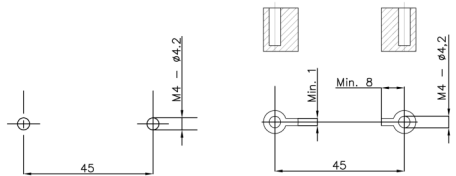
Note 1: it is possible to set this model of knife-switch according to the wished wiring for the customer, so that less components are needed. Here below the available settings:

- M26B** and **M26BH**, standard version,
 - nr. 4 bushes in the female part (2 poles IN + 2 poles OUT) and
 - nr. 4 bushes in the male part (2 + 2 poles OUT).
M26B MF and **M26BH MF**,
 - nr. 4 bushes only in the female part (2 poles IN + 2 poles OUT).
M26B MM and **M26BH MM**,
 - nr. 2 bushes in the female part (2 poles IN) and
 - nr. 2 bushes in the male part (2 poles OUT).
M26B MD and **M26BH MD**,
 - nr. 4 bushes in the female part (2 poles IN + 2 poles OUT) and
 - nr. 2 bushes in the male part (2 poles OUT).

Note 2: to tighten the clamps screw, use a screwdriver with max diameter 5 mm (screw tightening torque from 0,8 to 1,5 Nm).



- Instruction to fix the knife-switch on structures



- Fixing of the knife-switch using the holes diameter 4,2 mm with center distance 45 mm.

In case of fixing of the knife-switch on columns, foresee a support area with a width of at least 1 mm at a distance of at least 8 mm towards the fixing hole.

Note 3: for this knife-switch a series of accessories as a cord-grip and cable-guide is also available. These versions are described at page 707.



KNIFE SWITCHES - DISCONNECTING DEVICES

M26B-

2011



Type:

**2 POLES KNIFE SWITCH
(4 POLES KNIFE SWITCH ref. M26Q-)**

Rated voltage:

300 V

Impulse voltage:

5 kV

Rated current:

17 A

Working temperature:

T 120°C (*T220°C)

Type of clamps to connect the cables:

SCREW CLAMPS

Clamps connecting capacity:

18 - 12 AWG

In conformity to the standards:

**UL1059
CSA C22.2 No.158-10**

Approval marks:

cURus



M26B: 2 poles knife-switch with body in PA66 and working temperature T120°C.

***M26BH:** 2 poles knife-switch with body in LCP and working temperature T220°C.

- Body in black thermoplastic material PA66 25% G.F. - V0 (LCP for the version T220°C).
Contacts in nickel-plated copper alloy.
Reinforcing spring for the contacts in steel Aisi 301.
Bush-clamps with screw with combined slot-cross head, for cables from 18 to 12 AWG.
Leaf for the protection of the strands of the core, inserted in the bush.
- Weight: 110 g.

Note 1: is possible to set this model of knife-switch according to the wished wiring for the customer, so that less components are needed. Here below the available settings:

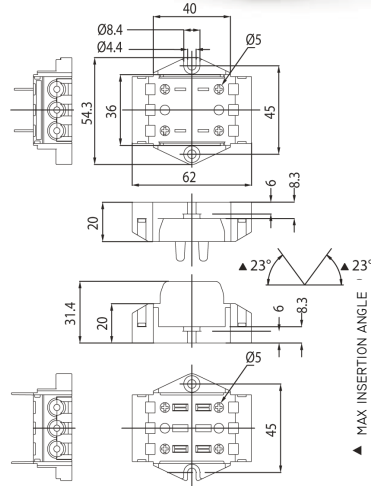
M26B and M26BH, standard version,
- nr. 4 bushes in the female part (2 poles IN + 2 poles OUT) and
- nr. 4 bushes in the male part (2 + 2 poles OUT).

M26B MF and M26BH MF,
- nr. 4 bushes only in the female part (2 poles IN + 2 poles OUT).

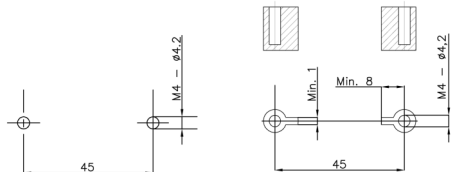
M26B MM and M26BH MM,
- nr. 2 bushes in the female part (2 poles IN) and
- nr. 2 bushes in the male part (2 poles OUT).

M26B MD and M26BH MD,
- nr. 4 bushes in the female part (2 poles IN + 2 poles OUT) and
- nr. 2 bushes in the male part (2 poles OUT).

Note 2: to tighten the clamps screw, use a screwdriver with max diameter 5 mm (screw tightening torque from 0,8 to 1,5 Nm).



- Instructions to fix the knife-switch on structures



- Fixing of the knife-switch using the holes diameter 4,2 mm with center distance 45 mm.

In case of fixing of the knife-switch on columns, foresee a support area with a width of at least 1 mm at a distance of at least 8 mm towards the fixing hole.

Note 3: for this knife-switch a series of accessories as a cord-grip and cable-guide is also available. These versions are described at page 707.

