

# KNIFE SWITCHES - DISCONNECTING DEVICES

## M26NT

2014



Type :

**2 POLES + 4 POLES  
KNIFE SWITCH**

Rated AC voltage:

**400 V AC (300 V DC)**

Impulse voltage:

**5 kV**

Rated AC current:

**20 A AC (14 A DC)**

Resistance to surface currents:

**TK 175**

Working temperature:

**T 120°C**

Insulation class:

**I**

Type of clamps to connect the cables:

**SCREW CLAMPS**

Clamps connecting capacity:

**0,75 ÷ 2,50 mm<sup>2</sup>**

Overvoltage category:

**III**

Protection degree (IP):

**IP20**

In conformity to the standards:

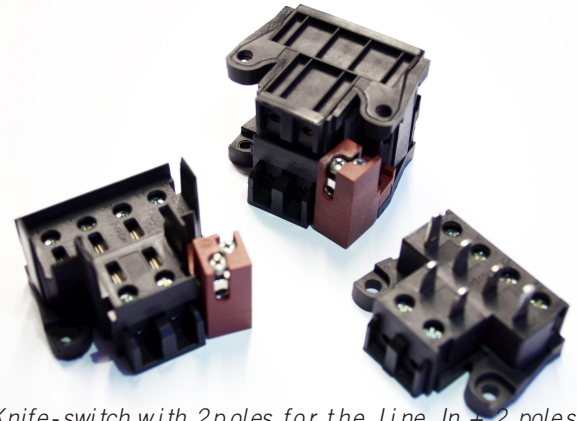
**EN 60598-1**

In conformity to the requirements of the directive:

**2014/35/EU**

Approval marks:

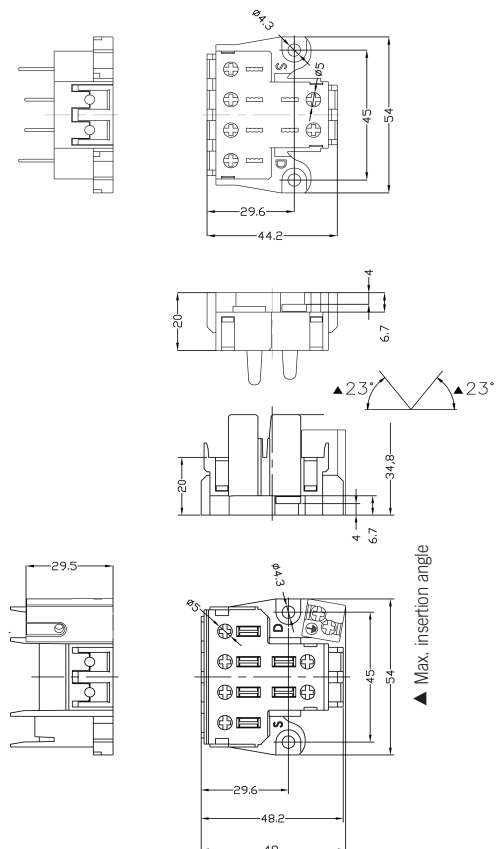
**CSV-IMQ**



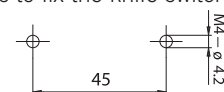
**M26NT:** Knife-switch with 2 poles for the Line In + 2 poles for the Line Out + 2 poles for the internal circuit + terminal block for the grounding

**M26NT:** Knife-switch with 2 poles for the Line In + 2 poles for the Line Out + 2 poles for the internal circuit + terminal block for the grounding

- Body in black thermoplastic material PA66 30% G.F. - V0.  
Contacts in nickel-plated copper alloy.  
Reinforcing spring for the contacts in steel Aisi 301.  
Bush-clamps with screws with combined slot+cross head, for cables section from 0,75 mm<sup>2</sup> to 2,50 mm<sup>2</sup>.  
Leaf for the protection of the strands of the core, inserted in the bush.  
Bush-clamp for the ground in nickel plated brass for cable section from 0,75mm<sup>2</sup> to 2,50 mm<sup>2</sup>.
- Weight: 90 g.



- Instructions to fix the knife switch on structures.



- Fixing of the knife switch using the holes diameter 4,2 mm with center distance 45 mm.

