

# KNIFE SWITCHES - DISCONNECTING DEVICES

## M26Q-

2011



Type: **4 POLES KNIFE SWITCH**

Rated AC voltage: **400 V AC (300 V DC)**  
 Impulse voltage: **5 kV**  
 Rated AC current: **20 A AC (14 A DC)**  
 Resistance to surface currents: **TK 175**  
 Working temperature: **T 120°C (\*T240°C)**  
 Insulation class: **II**  
 Type of clamps to connect the cables: **SCREW CLAMPS**  
 Clamps connecting capacity: **0,75 - 2,50 mm<sup>2</sup>**  
 Overvoltage category: **III**  
 Protection degree (IP): **IP20**  
 In conformity to the standards: **EN60598-1**  
 In conformity to the requirements of the directive: **2014/35/CE**

Approval marks: **Csv - IMQ**

**M26Q:** 4 poles knife-switch (4 poles IN + 4 poles OUT) with body in PA66 and working temperature T120°C.

**\*M26QH:** 4 poles knife-switch (4 poles IN + 4 poles OUT) with body in LCP and working temperature T240°C.

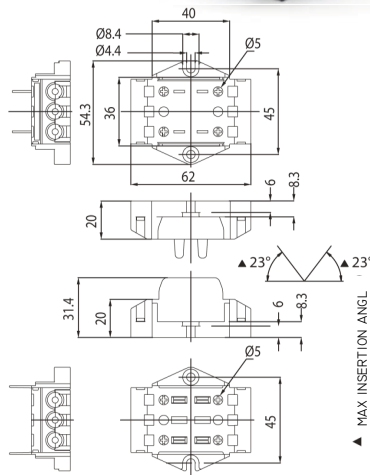
- Body in black thermoplastic material PA66 25% G.F. - V0 (LCP for the version T240°C).  
 Contacts in nickel-plated copper alloy.  
 Reinforcing spring for the contacts in steel Aisi 301.  
 Bush-clamps with screw with combined slot+cross head, for cables from 0,75 mm<sup>2</sup> to 2,50 mm<sup>2</sup>.  
 Leaf for the protection of the strands of the core, inserted in the bush.

- Weight: 110 g.

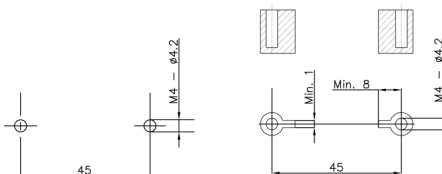
*Note 1: it is possible to set this model of knife-switch according to the wished wiring for the customer, so that less components are needed. Here below the available settings:*

**M26Q and M26QH, 4 poles special version:**  
 - nr. 4 bushes in the female part (4 poles IN) and  
 - nr. 4 bushes in the male part (4 poles OUT).

*Note 2: to tighten the clamps screw, use a screwdriver with max diameter 5 mm (screw tightening torque from 0,8 to 1,5 Nm).*



- Instructions to fix the knife-switch on structures



- Fixing of the knife-switch using the holes diameter 4,2 mm with center distance 45 mm.

In case of fixing of the knife-switch on columns, foresee a support area with a width of at least 1 mm at a distance of at least 8 mm towards the fixing hole.

*Note 3: for this knife-switch a series of accessories as a cord-grip and cable-guide is also available. These versions are described at page 707.*



# KNIFE SWITCHES - DISCONNECTING DEVICES

## M26Q-

2011



Type:

**4 POLES KNIFE SWITCH**

Rated voltage:  
Impulse voltage:  
Rated current:  
Working temperature:  
Type of clamps to connect the cables:  
Clamps connecting capacity:  
In conformity to the standards:

**300 V**  
**5 kV**  
**17 A**  
**T 120°C (\*T220°C)**

**SCREW CLAMPS**  
**18 - 12 AWG**  
**UL1059**  
**CSA C22.2 No.158-10**

Approval marks:

**cURus**



**M26Q:** 4 poles knife-switch (4 poles IN + 4 poles OUT) with body in PA66 and working temperature T120°C.

**\*M26QH:** 4 poles knife-switch (4 poles IN + 4 poles OUT) with body in LCP and working temperature T220°C.

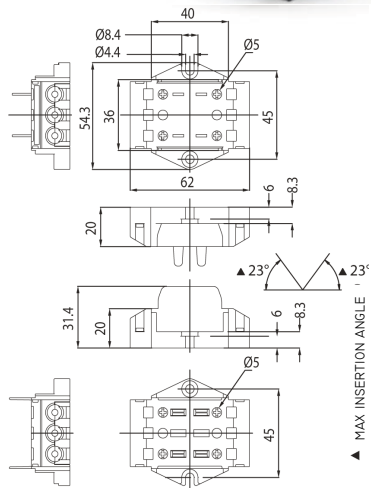
- Body in black thermoplastic material PA66 25% G.F. - V0 (LCP for the version T220°C).  
Contacts in nickel-plated copper alloy.  
Reinforcing spring for the contacts in steel Aisi 301.  
Bush-clamps with screw with combined slot+cross head, for cables from 18 to 12 AWG.  
Leaf for the protection of the strands of the core, inserted in the bush.

- Weight: 110 g.

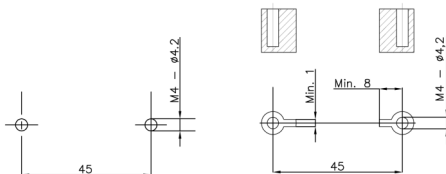
*Note 1: it is possible to set this model of knife-switch according to the wished wiring for the customer, so that less components are needed. Here below the available settings:*

- M26Q** and **M26QH**, 4 poles special version:
- nr. 4 bushes in the female part (4 poles IN) and
  - nr. 4 bushes in the male part (4 poles OUT).

*Note 2: to tighten the clamps screw, use a screwdriver with max diameter 5 mm (screw tightening torque from 0,8 to 1,5 Nm).*



- Instructions to fix the knife-switch on structures



- Fixing of the knife-switch using the holes diameter 4,2 mm with center distance 45 mm.

In case of fixing of the knife-switch on columns, foresee a support area with a width of at least 1 mm at a distance of at least 8 mm towards the fixing hole.

*Note 3: for this knife-switch a series of accessories as a cord-grip and cable-guide is also available. These versions are described at page 707.*

