

KNIFE SWITCHES - DISCONNECTING DEVICES

M26R-

2011



Type:

**4 POLES + GROUND KNIFE SWITCH
(6 POLES KNIFE SWITCH ref. M26S-)**

Rated AC voltage:

400 V AC (300 V DC)

Impulse voltage:

5 kV

Rated AC current:

20 A AC (14 A DC)

Resistance to surface currents:

TK 175

Working temperature:

T 120°C (*T240°C)

Insulation class:

II

Type of clamps to connect the cables:

SCREW CLAMPS

Clamps connecting capacity:

0,75 - 2,50 mm²

Overvoltage category:

III

Protection degree (IP):

IP20

In conformity to the standards:

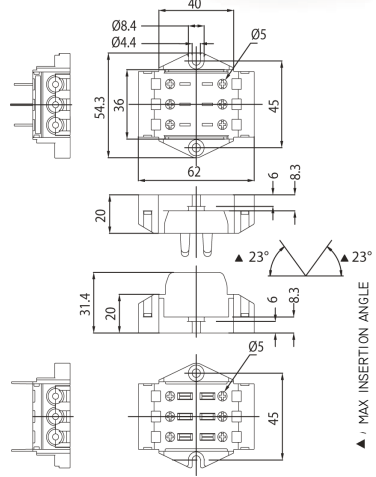
EN60598-1

In conformity to the requirements of the directive:

2014/35/CE

Approval marks:

Csv - IMQ



- M26R:** 4 poles + ground knife switch (4 poles IN + 4 poles OUT + ground with body in PA66 and working temperature T120°C).
- *M26RH:** 4 poles + ground knife switch (4 poles IN + 4 poles OUT + ground with body in LCP and working temperature T240°C).

- Body in black thermoplastic material PA66 25% G.F. - V0 (LCP for the version T240°C).
Contacts in nickel-plated copper alloy.
Reinforcing spring for the contacts in steel Aisi 301.
Bush-clamps with screw with combined slot+cross head, for cables from 0,75 mm² to 2,50 mm².
Leaf for the protection of the strands of the core, inserted in the bush.

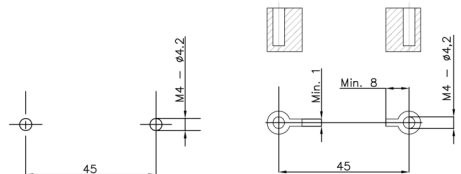
- Weight: 110 g.

Note 1: it is possible to set this model of knife-switch according to the wished wiring for the customer, so that less components are needed. Here below the available settings:

M26R and M26RH, 6 poles special version,
- nr. 6 bushes in the female part (4 poles IN + ground) and
- nr. 6 bushes in the male part (4 poles OUT + ground).

Note 2: to tighten the clamps screw, use a screwdriver with max diameter 5 mm (screw tightening torque from 0,8 to 1,5 Nm).

- Instructions to fix the knife-switch on structures



- Fixing of the knife-switch using the holes diameter 4,2 mm with center distance 45 mm.

In case of fixing of the knife-switch on columns, foresee a support area with a width of at least 1 mm at a distance of at least 8 mm towards the fixing hole.

Note 3: for this knife-switch a series of accessories as a cord-grip and cable-guide is also available. These versions are described at page 707.



KNIFE SWITCHES - DISCONNECTING DEVICES

M26R-

2011



Type: **4 POLES + GROUND KNIFE SWITCH**

Rated voltage: **300 V**
 Impulse voltage: **5 kV**
 Rated current: **17 A**
 Working temperature: **T 120°C (*T220°C)**

Type of clamps to connect the cables:
SCREW CLAMPS
 Clamps connecting capacity: **18 - 12 AWG**
 In conformity to the standards: **UL1059**
CSA C22.2 No.158-10

Approval marks: **cURus**



M26R: 4 poles + ground knife switch (4 poles IN + 4 poles OUT + ground with body in PA66 and working temperature T120°C).
***M26RH:** 4 poles + ground knife switch (4 poles IN + 4 poles OUT + ground with body in LCP and working temperature T220°C).

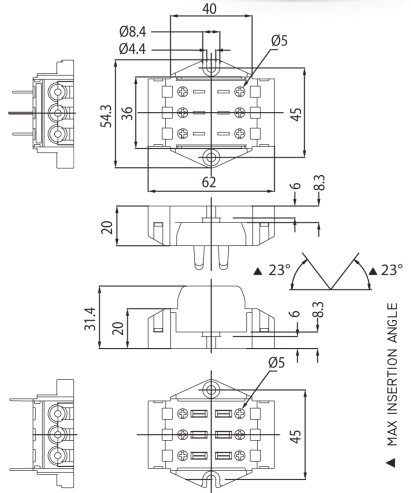
- Body in black thermoplastic material PA66 25% G.F. - V0 (LCP for the version T220°C).
 Contacts in nickel-plated copper alloy.
 Reinforcing spring for the contacts in steel Aisi 301.
 Bush-clamps with screw with combined slot+cross head, for cables from 18 to 12 AWG.
 Leaf for the protection of the strands of the core, inserted in the bush.

• Weight: 110 g.

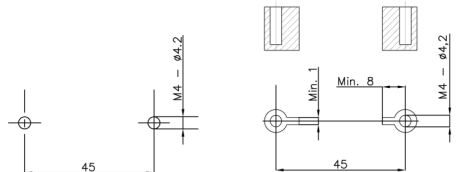
Note 1: is possible to set this model of knife-switch according to the wished wiring for the customer, so that less components are needed. Here below the available settings:

M26R and M26RH. 6 poles special version,
 - nr. 6 bushes in the female part (4 poles IN + ground) and
 - nr. 6 bushes in the male part (4 poles OUT + ground).

Note 2: to tighten the clamps screw, use a screwdriver with max diameter 5 mm (screw tightening torque from 0,8 to 1,5 Nm).



- Instructions to fix the knife-switch on structures



- Fixing of the knife-switch using the holes diameter 4,2 mm with center distance 45 mm.

In case of fixing of the knife-switch on columns, foresee a support area with a width of at least 1 mm at a distance of at least 8 mm towards the fixing hole.

Note 3: for this knife-switch a series of accessories as a cord-grip and cable-guide is also available. These versions are described at page 707.

