

KNIFE SWITCHES - DISCONNECTING DEVICES

M26-

2011



Type:	3 POLES KNIFE SWITCH (6 POLES KNIFE SWITCH ref. M26S-)
Rated voltage:	400 V AC (300 V DC)
Impulse voltage:	5 kV
Rated current:	20 A AC (14 A DC)
Resistance to surface currents:	TK 175
Working temperature:	T 120°C (*T240°C)
Insulation class:	II
Type of clamps to connect the cables:	SCREW CLAMPS
Clamps connecting capacity:	0,75 - 2,50 mm²
Overvoltage category:	III
Protection degree (IP):	IP20
In conformity to the standards:	EN60598-1
In conformity to the requirements of the directive:	2006/95/CE
Approval marks:	CSV - IMQ



- M26:** 3 poles knife-switch with body in PA66 and working temperature T120°C.
- *M26H:** 3 poles knife-switch with body in LCP and working temperature T240°C.
- M26S:** 6 poles knife-switch (6 poles IN + 6 poles OUT) with body in PA66 and working temperature T120°C.
- *M26SH:** 6 poles knife-switch (6 poles IN + 6 poles OUT) with body in LCP and working temperature T240°C.

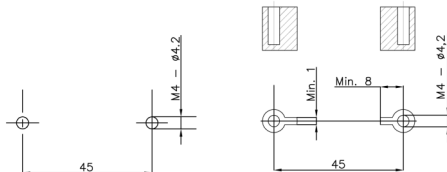
- Body in black thermoplastic material PA66 25% G.F. - V0 (LCP for the version T240°C).
- Contacts in nickel-plated copper alloy.
- Reinforcing spring for the contacts in steel Aisi 301.
- Bush-clamps with screw with combined slot+cross head, for cables from 0,75 mm² to 2,50 mm².
- Leaf for the protection of the strands of the core, inserted in the bush.
- Weight: 125 g.

Note 1: is possible to set this model of knife-switch according to the wished wiring for the customer, so that less components are needed. Here below the available settings:

- M26 and M26H, standard version,**
- nr. 6 bushes in the female part (3 poles IN + 3 poles OUT) and
- nr. 6 bushes in the male part (3 + 3 poles OUT).
- M26 MF and M26H MF,**
- nr. 6 bushes only in the female part (3 poles IN + 3 poles OUT).
- M26 MM and M26H MM,**
- nr. 3 bushes in the female part (3 poles IN) and
- nr. 3 bushes in the male part (3 poles OUT).
- M26 MD and M26H MD,**
- nr. 6 bushes in the female part (3 poles IN + 3 poles OUT) and
- nr. 3 bushes in the male part (3 poles OUT).
- M26S and M26SH, 6 poles special version,**
- nr. 6 bushes in the female part (6 poles IN) and
- nr. 6 bushes in the male part (6 poles OUT).

Note 2: to tighten the clamps screw, use a screwdriver with max diameter 5 mm (screw tightening torque from 0,8 to 1,5 Nm).

- Instruction to fix the knife-switch on structures



- Fixing of the knife-switch using the holes diameter 4,2 mm with center distance 45 mm.

In case of fixing of the knife-switch on columns, foresee a support area with a width of at least 1 mm at a distance of at least 8 mm towards the fixing hole.

Note 3: for this knife-switch are available also a series of accessories as a cord-grip and cable-guide. These versions are described at page 707.



KNIFE SWITCHES - DISCONNECTING DEVICES

M26-

2011



Type:	3 POLES KNIFE SWITCH (6 POLES KNIFE SWITCH ref. M26S-)
Rated voltage:	300 V
Impulse voltage:	5 kV
Rated current:	17 A
Working temperature:	T 120°C (*T220°C)
Type of clamps to connect the cables:	SCREW CLAMPS
Clamps connecting capacity:	18 - 12 AWG



In conformity to the standards:	UL1059 CSA C22.2 No.158-10
Approval marks:	cURus

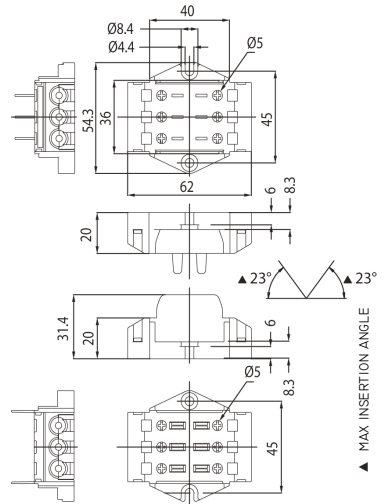
- M26:** 3 poles knife-switch with body in PA66 and working temperature T120°C.
- *M26H:** 3 poles knife-switch with body in LCP and working temperature T220°C
- M26S:** 6 poles knife-switch (6 poles IN + 6 poles OUT) with body in PA66 and working temperature T120°C.
- *M26SH:** 6 poles knife-switch (6 poles IN + 6 poles OUT) with body in LCP and working temperature T220°C.

- Body in black thermoplastic material PA66 25% G.F. - V0 (LCP for the version T220°C).
- Contacts in nickel-plated copper alloy.
- Reinforcing spring for the contacts in steel Aisi 301.
- Bush-clamps with screw with combined slot+cross head, for cables from 18 to 12 AWG.
- Leaf for the protection of the strands of the core, inserted in the bush.
- Weight: 125 g.

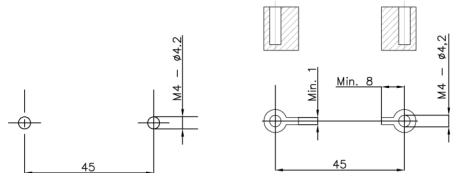
Note 1: is possible to set this model of knife-switch according to the wished wiring for the customer, so that less components are needed. Here below the available settings:

- M26 and M26H, standard version,**
- nr. 6 bushes in the female part (3 poles IN + 3 poles OUT) and
- nr. 6 bushes in the male part (3 + 3 poles OUT).
- M26 MF and M26H MF,**
- nr. 6 bushes only in the female part (3 poles IN + 3 poles OUT).
- M26 MM and M26H MM,**
- nr. 3 bushes in the female part (3 poles IN) and
- nr. 3 bushes in the male part (3 poles OUT).
- M26 MD and M26H MD,**
- nr. 6 bushes in the female part (3 poles IN + 3 poles OUT) and
- nr. 3 bushes in the male part (3 poles OUT).
- M26S and M26SH, 6 poles special version,**
- nr. 6 bushes in the female part (6 poles IN) and
- nr. 6 bushes in the male part (6 poles OUT).

Note 2: to tighten the clamps screw, use a screwdriver with max diameter 5 mm (screw tightening torque from 0,8 to 1,5 Nm).



• Instruction to fix the knife-switch on structures



• Fixing of the knife-switch using the holes diameter 4,2 mm with center distance 45 mm.

In case of fixing of the knife-switch on columns, foresee a support area with a width of at least 1 mm at a distance of at least 8 mm towards the fixing hole.

Note 3: for this knife-switch are available also a series of accessories as a cord-grip and cable-guide. These versions are described at page 707.

