

KNIFE SWITCHES - DISCONNECTING DEVICES

M26T-

2011



Type:	2 POLES + GROUND KNIFE SWITCH (4 POLES + GROUND KNIFE SWITCH rif. M26R-) (5 POLES + GROUND KNIFE SWITCH rif. M26Z-)
Rated voltage:	400 V AC (300 V DC)
Impulse voltage:	5 kV
Rated current:	20 A AC (14 A DC)
Resistance to surface currents:	TK 175
Working temperature:	T 120°C (*T240°C)
Insulation class:	I
Type of clamps to connect the cables:	SCREW CLAMPS
Clamps connecting capacity:	0,75 - 2,50 mm²
Overvoltage category:	III
Protection degree (IP):	IP20
In conformity to the standards:	EN60598-1
In conformity to the requirements of the directive:	2006/95/CE
Approval marks:	CSv - IMQ



- M26T:** 2 poles + ground knife switch with body in PA66 and working temperature T120°C.
 - *M26TH:** 2 poles + ground knife switch with body in LCP and working temperature T240°C.
 - M26R:** 4 poles + ground knife switch (4 poles IN + 4 poles OUT + ground with body in PA66 and working temperature T120°C).
 - *M26RH:** 4 poles + ground knife switch (4 poles IN + 4 poles OUT + ground with body in LCP and working temperature T240°C).
 - M26Z:** 5 poles + ground knife switch (5 poles IN + 5 poles OUT + ground with body in PA66 and working temperature T120°C).
 - *M26ZH:** 5 poles + ground knife switch (5 poles IN + 5 poles OUT + ground with body in LCP and working temperature T240°C).
- Body in black thermoplastic material PA66 25% G.F. - V0 (LCP for the version T240°C).
 - Contacts in nickel-plated copper alloy.
 - Reinforcing spring for the contacts in steel Aisi 301.
 - Bush-clamps with screw with combined slot+cross head, for cables from 0,75 mm² to 2,50 mm².
 - Leaf for the protection of the strands of the core, inserted in the bush.
 - Weight: 110 g.

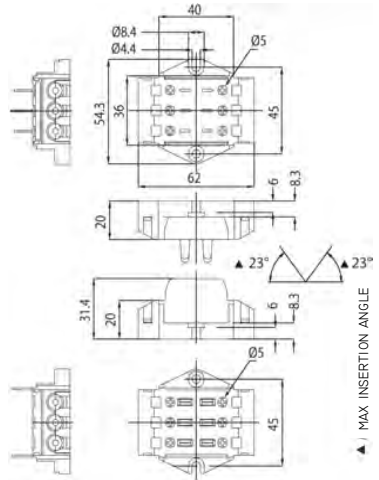
Note 1: is possible to set this model of knife-switch according to the wished wiring for the customer, so that less components are needed.

Here below the available settings:

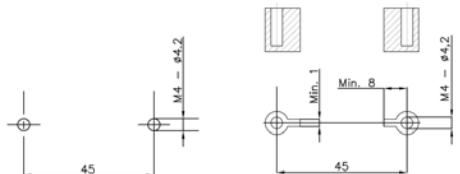
- M26T e M26TH, standard version,**
- nr. 6 bushes in the female part (3 poles IN + 3 poles OUT) and
- nr. 6 bushes in the male part (3 + 3 poles OUT).
- M26T MF e M26TH MF,**
- nr. 6 bushes only in the female part (3 poles IN + 3 poles OUT).
- M26T MM e M26TH MM,**
- nr. 3 bushes in the female part (3 poles IN) and
- nr. 3 bushes in the male part (3 poles OUT).
- M26T MD e M26TH MD,**
- nr. 6 bushes in the female part (3 poles IN + 3 poles OUT) and
- nr. 3 bushes in the male part (3 poles OUT).
- M26R e M26RH, 6 poles special version,**
- nr. 6 bushes in the female part (4 poles IN + ground) and
- nr. 6 bushes in the male part (4 poles OUT + ground).
- M26Z e M26ZH, 6 poles special version,**
- nr. 6 bushes in the female part (5 poles IN + ground) and
- nr. 6 bushes in the male part (5 poles OUT + ground).



Note 2: to tighten the clamps screw, use a screwdriver with max diameter 5 mm (screw tightening torque from 0,8 to 1,5 Nm).



- Instruction to fix the knife-switch on structures



- Fixing of the knife-switch using the holes diameter 4,2 mm with center distance 45 mm.

In case of fixing of the knife-switch on columns, foresee a support area with a width of at least 1 mm at a distance of at least 8 mm towards the fixing hole.

Note 3: for this knife-switch are available also a series of accessories as a cord-grip and cable-guide. These versions are described at page 707.

KNIFE SWITCHES - DISCONNECTING DEVICES

M26T-

2011



Type:	2 POLES + GROUND KNIFE SWITCH (4 POLES + GROUND KNIFE SWITCH ref. M26R-) (5 POLES + GROUND KNIFE SWITCH ref. M26Z-)
Rated voltage:	300 V
Impulse voltage:	5 kV
Rated current:	17 A
Working temperature:	T 120°C (*T220°C)
Type of clamps to connect the cables:	SCREW CLAMPS
Clamps connecting capacity:	18 - 12 AWG
In conformity to the standards:	UL1059 CSA C22.2 No.158-10

Approval marks: **cURus**

- M26T:** 2 poles + ground knife switch with body in PA66 and working temperature T120°C.
- *M26TH:** 2 poles + ground knife switch with body in LCP and working temperature T220°C.
- M26R:** 4 poles + ground knife switch (4 poles IN + 4 poles OUT + ground) with body in PA66 and working temperature T120°C.
- *M26RH:** 4 poles + ground knife switch (4 poles IN + 4 poles OUT + ground) with body in LCP and working temperature T220°C.
- M26Z:** 5 poles + ground knife switch (5 poles IN + 5 poles OUT + ground) with body in PA66 and working temperature T120°C.
- *M26ZH:** 5 poles + ground knife switch (5 poles IN + 5 poles OUT + ground) with body in LCP and working temperature T220°C.

- Body in black thermoplastic material PA66 25% G.F. - V0 (LCP for the version T220°C).
- Contacts in nickel-plated copper alloy.
- Reinforcing spring for the contacts in steel Aisi 301.
- Bush-clamps with screw with combined slot+cross head, for cables from 18 to 12 AWG.
- Leaf for the protection of the strands of the core, inserted in the bush.
- Weight: 110 g.

Note 1: is possible to set this model of knife-switch according to the wished wiring for the customer, so that less components are needed. Here below the available settings:

M26T e M26TH, standard version,
- nr. 6 bushes in the female part (3 poles IN + 3 poles OUT) and
- nr. 6 bushes in the male part (3 + 3 poles OUT).

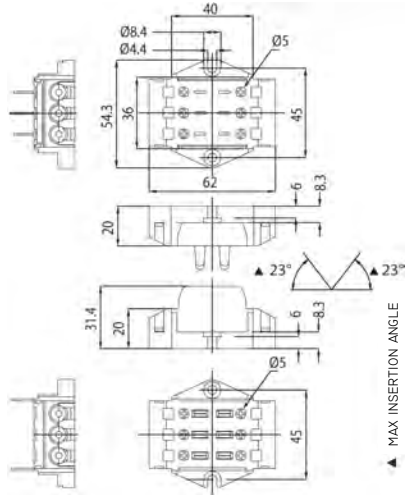
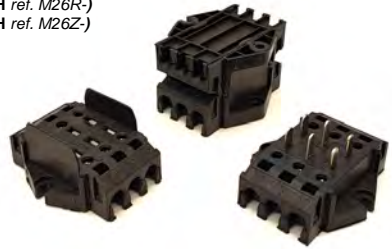
M26T MF e M26TH MF,
- nr. 6 bushes only in the female part (3 poles IN + 3 poles OUT).

M26T MM e M26TH MM,
- nr. 3 bushes in the female part (3 poles IN) and
- nr. 3 bushes in the male part (3 poles OUT).

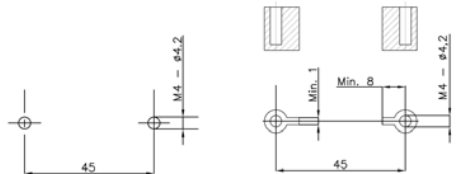
M26T MD e M26TH MD,
- nr. 6 bushes in the female part (3 poles IN + 3 poles OUT) and
- nr. 3 bushes in the male part (3 poles OUT).

M26R e M26RH, 6 poles special version,
- nr. 6 bushes in the female part (4 poles IN + ground) and
- nr. 6 bushes in the male part (4 poles OUT + ground).

M26Z e M26ZH, 6 poles special version,
- nr. 6 bushes in the female part (5 poles IN + ground) and
- nr. 6 bushes in the male part (5 poles OUT + ground).



- Instruction to fix the knife-switch on structures



- Fixing of the knife-switch using the holes diameter 4,2 mm with center distance 45 mm.

In case of fixing of the knife-switch on columns, foresee a support area with a width of at least 1 mm at a distance of at least 8 mm towards the fixing hole.



Note 2: to tighten the clamps screw, use a screwdriver with max diameter 5 mm (screw tightening torque from 0,8 to 1,5 Nm).

Note 3: for this knife-switch are available also a series of accessories as a cord-grip and cable-guide. These versions are described at page 707.