

# KNIFE SWITCHES - DISCONNECTING DEVICES

## M26U-1 M26U-2



Type:	<b>1 OR 2 POLES MODULAR KNIFE-SWITCH</b>
Rated voltage:	<b>400 V</b>
Impulse voltage:	<b>5 kV</b>
Rated current:	<b>20 A</b>
Resistance to surface currents:	<b>TK 175</b>
Working temperature:	<b>T 120°C (*T240°C)</b>
Insulation class:	<b>II</b>
Type of clamps to connect the cables:	<b>SCREW CLAMPS</b>
Clamps connecting capacity:	<b>0,75 + 2,50 mm<sup>2</sup></b>
Overvoltage category:	<b>III</b>
Protection degree (IP):	<b>IP20</b>
In conformity to the standards:	<b>EN 60598-1</b>
In conformity to the requirements of the directive:	<b>2006/95/CE</b>
Approval marks:	<b>CSv - IMQ</b>



**M26U1:** modular knife-switch with 1 pole (Female part 1 pole Line IN + 1 pole Line OUT - male part 2 poles Line OUT) with body in PA66 and working temperature T120°C.

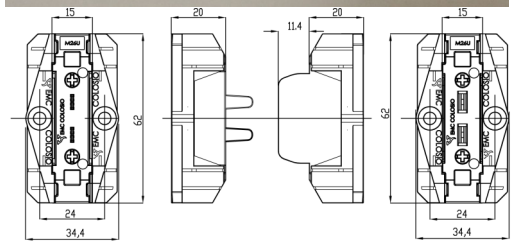
**\*M26UH1:** modular knife-switch with 1 pole (Female part 1 pole Line IN + 1 pole Line OUT - male part 2 poles Line OUT) with body in LCP and working temperature T240°C.

**M26U2:** modular knife-switch with 2 poles (Female part 2 poles Line IN - male part 2 poles Line OUT) with body in PA66 and working temperature T120°C.

**\*M26UH2:** modular knife-switch with 2 poles (Female part 2 poles Line IN - male part 2 poles Line OUT) with body in LCP and working temperature T240°C.

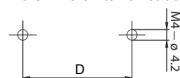
- Body in black thermoplastic material PA66 25% G.F. - V0 (LCP for the version T240°C).  
Contacts in nickel-plated copper alloy.  
Reinforcing spring for the contacts in steel Aisi 301.  
Bush-clamps with screw with combined slot+cross head, for cables from 0,75 mm<sup>2</sup> to 2,50 mm<sup>2</sup>.  
Leaf for the protection of the strands of the core, inserted in the bush.
- Weight: 40 g.

*Note : to tighten the clamps screw, use a screwdriver with max diameter 5 mm (screw tightening torque from 0,8 to 1,5 Nm).*



Modules Nr.	"D" (mm)	"D1" (mm)
1	24	34.4
2	39	49.4
3	54	64.4
4	69	79.4
5	84	94.4

- Instruction to fix the knife-switch on structures



- Fixing of the knife-switch using the holes diameter 4.2 mm with center distance D (see table).

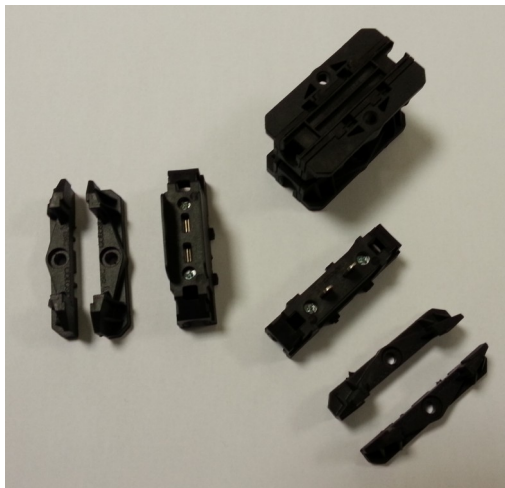


# KNIFE SWITCHES - DISCONNECTING DEVICES

## M26U-1 M26U-2



Type:	<b>1 OR 2 POLES MODULAR KNIFE-SWITCH</b>
Rated voltage:	<b>300 V</b>
Impulse voltage:	<b>5 kV</b>
Rated current:	<b>17 A</b>
Working temperature:	<b>T 120°C (*T220°C)</b>
Type of clamps to connect the cables:	<b>SCREW CLAMPS</b>
Clamps connecting capacity:	<b>18 - 12 AWG</b>
In conformity to the standards:	<b>UL1059 CSA C22.2 No.158-10</b>
Approval marks:	<b>cURus</b>



**M26U1:** modular knife-switch with 1 pole (Female part 1 pole Line IN + 1 pole Line OUT - male part 2 poles Line OUT) with body in PA66 and working temperature T120°C.

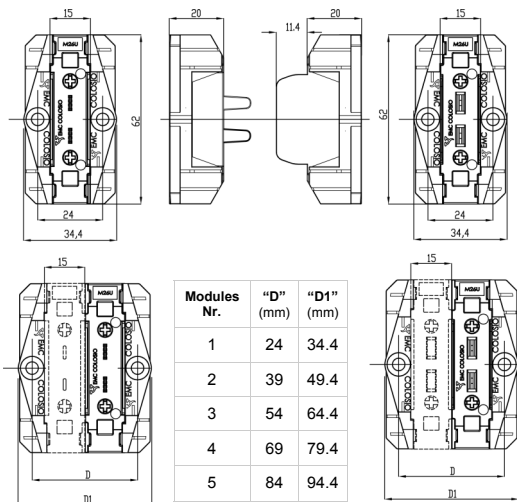
**\*M26UH1:** modular knife-switch with 1 pole (Female part 1 pole Line IN + 1 pole Line OUT - male part 2 poles Line OUT) with body in LCP and working temperature T220°C.

**M26U2:** modular knife-switch with 2 poles (Female part 2 poles Line IN - male part 2 poles Line OUT) with body in PA66 and working temperature T120°C.

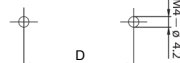
**\*M26UH2:** modular knife-switch with 2 poles (Female part 2 poles Line IN - male part 2 poles Line OUT) with body in LCP and working temperature T220°C.

- Body in black thermoplastic material PA66 25% G.F. - V0 (LCP for the version T220°C).
- Contacts in nickel-plated copper alloy.
- Reinforcing spring for the contacts in steel Aisi 301.
- Bush-clamps with screw with combined slot+cross head, for cables from 18 to 12 AWG.
- Leaf for the protection of the strands of the core, inserted in the bush.
- Weight: 40 g.

*Note: to tighten the clamps screw, use a screwdriver with max diameter 5 mm (screw tightening torque from 0,8 to 1,5 Nm).*



• Instruction to fix the knife-switch on structures



• Fixing of the knife-switch using the holes diameter 4.2 mm with center distance D (see table).

