

KNIFE SWITCHES - DISCONNECTING DEVICES

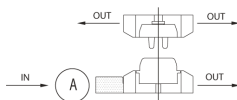
M26-

2011



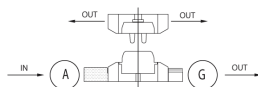
M26A - M26HA
M26BA - M26BHA
M26TA - M26THA

Knife-switch of the series M26— provided:
 - on the female side with a cord-grip.



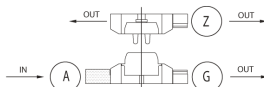
M26AG1 - M26HAG1
M26BAG1 - M26BHAG1
M26TAG1 - M26THAG1

Knife-switch of the series M26— provided:
 - on the female side with a cord-grip and a cables-guide.



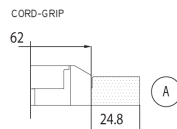
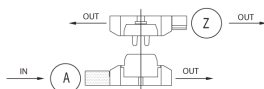
M26AG2 - M26HAG2
M26BAG2 - M26BHAG2
M26TAG2 - M26THAG2

Knife-switch of the series M26— provided:
 - on the female side with a cord-grip and a cables-guide and
 - on the male side with a cables-guide.



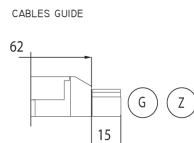
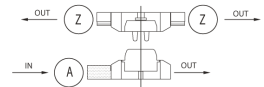
M26AZ1 - M26HAZ1
M26BAZ1 - M26BHAZ1
M26TAZ1 - M26THAZ1

Knife-switch of the series M26— provided:
 - on the female side with a cord-grip and
 - on the male side with a cables-guide.



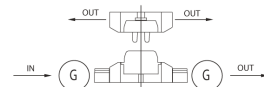
M26AZ2 - M26HAZ2
M26BAZ2 - M26BHAZ2
M26TAZ2 - M26THAZ2

Knife-switch of the series M26— provided:
 - on the female side with a cord-grip and
 - on the male side with two cables-guide.



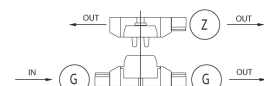
M26G2 - M26HG2
M26BG2 - M26BHG2
M26TG2 - M26THG2

Knife-switch of the series M26— provided:
 - on the female side with two cables-guide.



M26G3 - M26HG3
M26BG3 - M26BHG3
M26TG3 - M26THG3

Knife-switch of the series M26— provided:
 - on the female side with two cables-guide and
 - on the male side with a cables-guide.



- Additional weight: 5 g for each additional accessory.
- the cord-grip is foreseen for cables from diameter 4mm to diameter 13mm.

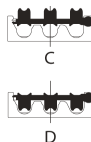
Fixing of the cord-grip through two thread-forming screw for plastic, with cross head, already inserted in the device.

Here below the scheme for the installation:



- The cables-guide is foreseen for cables from diameter 2,7 mm to diameter 6,0 mm.

Click fixing of the cables-guide. Here below the scheme for the use:



KNIFE SWITCHES - DISCONNECTING DEVICES

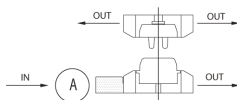
M26-

2011



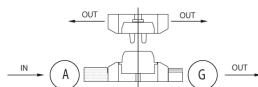
M26A - M26HA
M26BA - M26BHA
M26TA - M26THA

Knife-switch of the series M26— provided:
 - on the female side with a cord-grip.



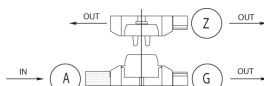
M26AG1 - M26HAG1
M26BAG1 - M26BHAG1
M26TAG1 - M26THAG1

Knife-switch of the series M26— provided:
 - on the female side with a cord-grip and a cables-guide.



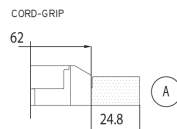
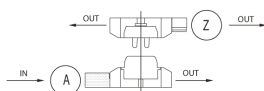
M26AG2 - M26HAG2
M26BAG2 - M26BHAG2
M26TAG2 - M26THAG2

Knife-switch of the series M26— provided:
 - on the female side with a cord-grip and a cables-guide and
 - on the male side with a cables-guide.



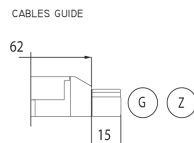
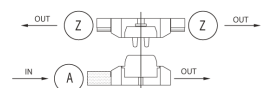
M26AZ1 - M26HAZ1
M26BAZ1 - M26BHAZ1
M26TAZ1 - M26THAZ1

Knife-switch of the series M26— provided:
 - on the female side with a cord-grip and
 - on the male side with a cables-guide.



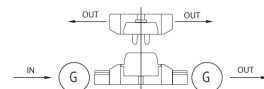
M26AZ2 - M26HAZ2
M26BAZ2 - M26BHAZ2
M26TAZ2 - M26THAZ2

Knife-switch of the series M26— provided:
 - on the female side with a cord-grip and
 - on the male side with two cables-guide.



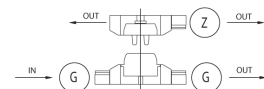
M26G2 - M26HG2
M26BG2 - M26BHG2
M26TG2 - M26THG2

Knife-switch of the series M26— provided:
 - on the female side with two cables-guide.



M26G3 - M26HG3
M26BG3 - M26BHG3
M26TG3 - M26THG3

Knife-switch of the series M26— provided:
 - on the female side with two cables-guide and
 - on the male side with a cables-guide.



- Additional weight: 5 g for each additional accessory.
- the cord-grip is foreseen for cables from diameter 4mm to diameter 13mm.

Fixing of the cord-grip thought two thread-forming screw for plastic, with cross head, already inserted in the device.
 Here below the scheme for the installation:



- The cables-guide is foreseen for cables from diameter 2,7 mm to diameter 6,0 mm.

Click fixing of the cables-guide. Here below the scheme for the use:

