

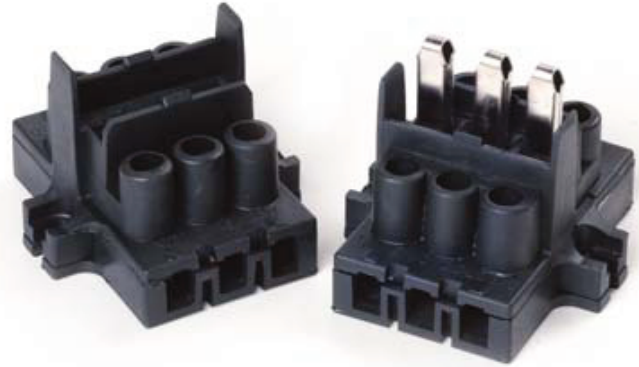
# KNIFE SWITCHES - DISCONNECTING DEVICES

## M27

1990



Type:	<b>3 POLES KNIFE SWITCH</b>
Rated voltage:	<b>400 V</b>
Rated current:	<b>16 A (10 A for M27E)</b>
Resistance to surface currents:	<b>TK 175</b>
Working temperature:	<b>T 120°C</b>
Insulation class:	<b>II</b>
Type of clamps to connect the cables:	<b>SCREW CLAMPS</b>
Clamps connecting capacity:	<b>1,50 ÷ 4,00 mm<sup>2</sup></b>
Overvoltage category:	<b>III</b>
Protection degree (IP):	<b>IP20</b>
In conformity to the standards:	<b>EN 60598-1</b>
In conformity to the requirements of the directive:	<b>2014/35/EU</b>



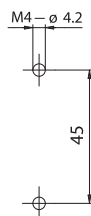
Approval marks:

- M27:** knife switch with rated current 16 A.
- M27E:** knife switch with rated current 10 A.
- M27-H:** knife switch as M27 or M27E with black PPS body and with working temperature T220°C.

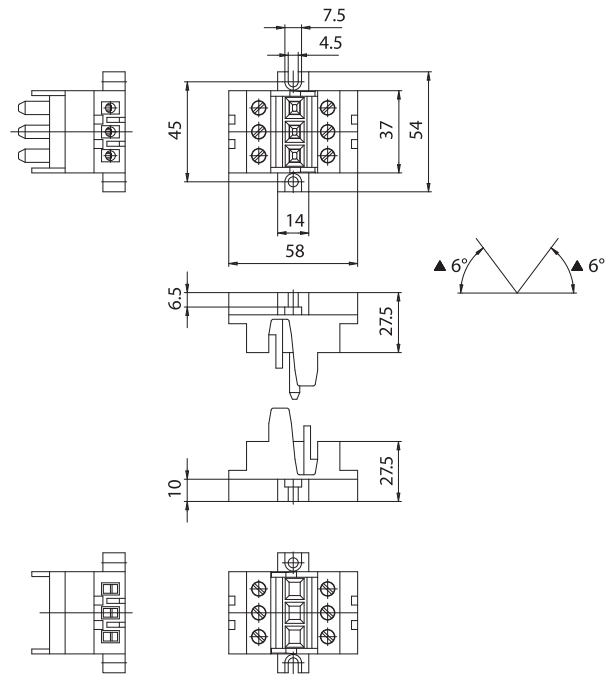
- Body in black thermoplastic material PA66 20% G.F. - V0. Contacts in nickel-plated phosphorous bronze. Bush-clamps with screws with combined slot+cross head, for cables section from 1,50 mm<sup>2</sup> to 4,00 mm<sup>2</sup>.
- Weight: 133 g.

*Note: to tighten the clamps screws, use a screwdriver with max. diameter 6 mm.*

- Instructions to fix the knife switch on structures.



- Fixing of the knife switch using the holes diameter 4,2 mm with center distance 45 mm (if M4 screws are used, the head-diameter should be less than 7,5 mm).



▲ Max. insertion angle

*Attention: the knife switch is provided to be used in internal wiring of lighting fixtures. It is not foreseen that an installer can connect this device to the net.*



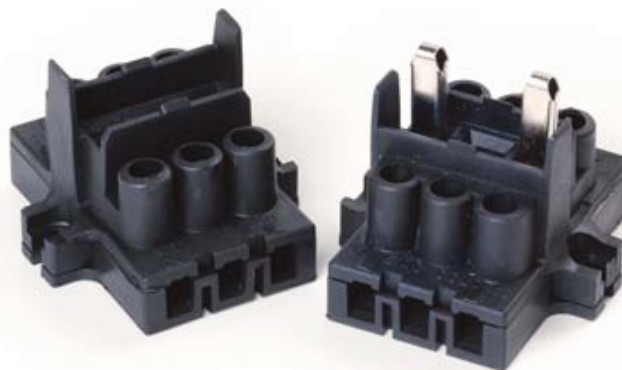
# KNIFE SWITCHES - DISCONNECTING DEVICES

## M27B

1990



Type:	<b>2 POLES KNIFE SWITCH</b>
Rated voltage:	<b>400 V</b>
Rated current:	<b>16 A (10 A for M27BE)</b>
Resistance to surface currents:	<b>TK 175</b>
Working temperature:	<b>T 120°C</b>
Insulation class:	<b>II</b>
Type of clamps to connect the cables:	<b>SCREW CLAMPS</b>
Clamps connecting capacity:	<b>1,50 ÷ 4,00 mm<sup>2</sup></b>
Overvoltage category:	<b>III</b>
Protection degree (IP):	<b>IP20</b>
In conformity to the standards:	<b>EN 60598-1</b>
In conformity to the requirements of the directive:	<b>2014/35/EU</b>



Approval marks:

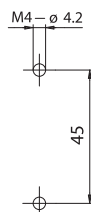
- M27B:** knife switch with rated current 16 A.
- M27BE:** knife switch with rated current 10 A.
- M27B-H:** knife switch as M27B or M27BE with black PPS body and with working temperature T220°C.

- Body in black thermoplastic material PA66 20% G.F. - V0. Contacts in nickel-plated phosphorous bronze. Bush-clamps with screws with combined slot+cross head, for cables section from 1,50 mm<sup>2</sup> to 4,00 mm<sup>2</sup>.

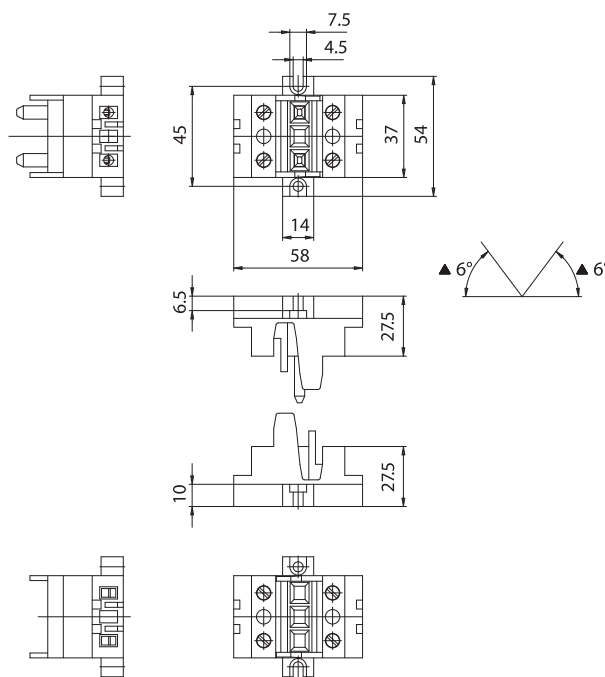
- Weight: 111 g.

*Note: to tighten the clamps screws, use a screwdriver with max. diameter 6 mm.*

- Instructions to fix the knife switch on structures.



- Fixing of the knife switch using the holes diameter 4,2 mm with center distance 45 mm (if M4 screws are used, the head-diameter should be less than 7,5 mm).



*Attention: the knife switch is provided to be used in internal wiring of lighting fixtures. It is not foreseen that an installer can connect this device to the net.*



# KNIFE SWITCHES - DISCONNECTING DEVICES

## M27T

1990



Type:	<b>2 POLES + GROUND KNIFE SWITCH</b>
Rated voltage:	<b>400 V</b>
Rated current:	<b>16 A (10 A for M27TE)</b>
Resistance to surface currents:	<b>TK 175</b>
Working temperature:	<b>T 120°C</b>
Insulation class:	<b>I</b>
Type of clamps to connect the cables:	<b>SCREW CLAMPS</b>
Clamps connecting capacity:	<b>1,50 ÷ 4,00 mm<sup>2</sup></b>
Overvoltage category:	<b>III</b>
Protection degree (IP):	<b>IP20</b>
In conformity to the standards:	<b>EN 60598-1</b>
In conformity to the requirements of the directive:	<b>2014/35/EU</b>



Approval marks:

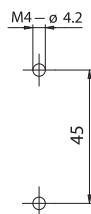
- M27T:** knife switch with rated current 16 A.
- M27TE:** knife switch with rated current 10 A.
- M27T-H:** knife switch as M27T or M27TE with black PPS body and with working temperature T220°C.

- Body in black thermoplastic material PA66 20% G.F. - V0. Contacts in nickel-plated phosphorous bronze. Bush-clamps with screws with combined slot+cross head, for cables section from 1,50 mm<sup>2</sup> to 4,00 mm<sup>2</sup>.

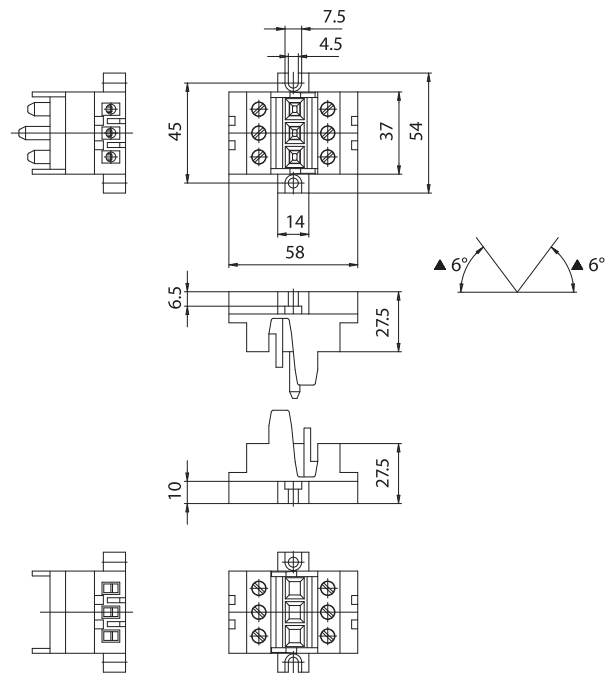
- Weight: 133 g.

*Note: to tighten the clamps screws, use a screwdriver with max. diameter 6 mm.*

- Instructions to fix the knife switch on structures.



- Fixing of the knife switch using the holes diameter 4,2 mm with center distance 45 mm (if M4 screws are used, the head-diameter should be less than 7,5 mm).



▲ Max. insertion angle

*Attention: the knife switch is provided to be used in internal wiring of lighting fixtures. It is not foreseen that an installer can connect this device to the net.*



# KNIFE SWITCHES - DISCONNECTING DEVICES

**M27A-M27HA**

**M27EA-M27EHA**

1990



**M27BA-M27BHA**

**M27BEA-M27BEHA**

**M27TA-M27THA**

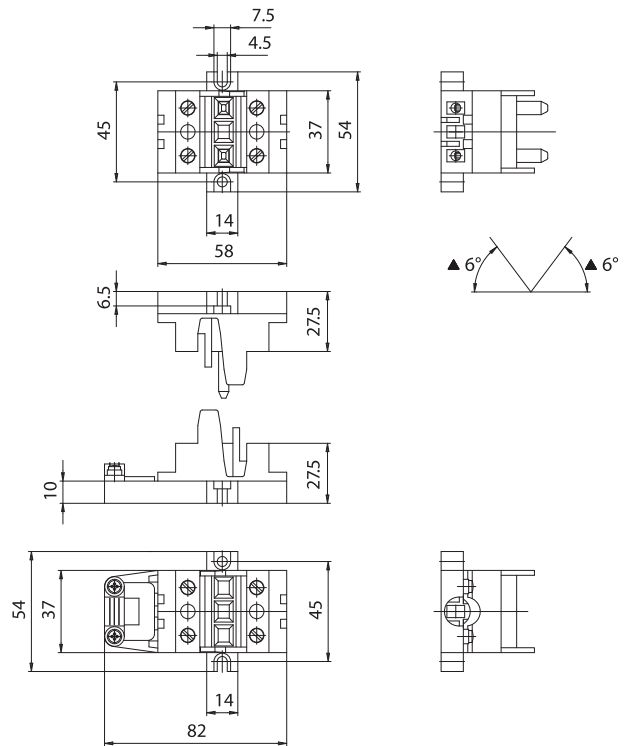
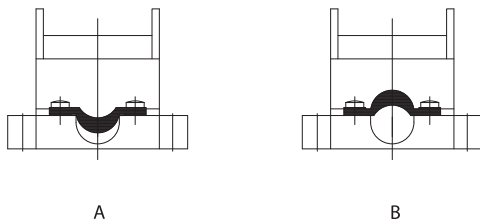
**M27TEA-M27TEHA**

Knife switch of line M27- with cable clamp for electrical cables with maximum diameter 13 mm, fixed in the “female” part of the knife switch.



- Additional weight: +10 g.

- The fastening of the cable clamp occurs by two thread-forming screws for plastic, with cross head, already inserted in the device according to the following indications:



- Cable clamp bracket in position A: allows to clamp up to three single-conductor cables with diameter 4 mm.
- Cable clamp bracket in position B: allows to clamp up to multi-conductor cables with maximum diameter 13 mm.

