

SWITCHES

M88-UL



Switch:

Rated voltage:
Rated current:

Type of clamps for
cables connection:

Clamps connecting capacity:

In conformity to the standards:

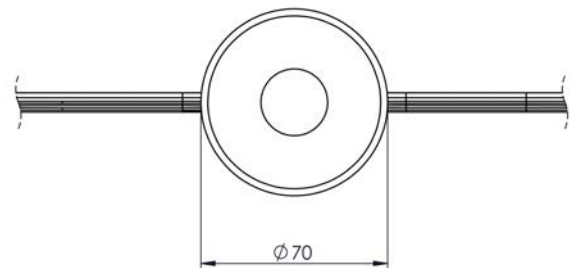
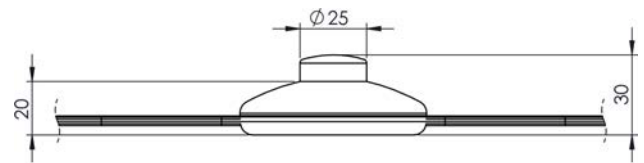
Approval marks:

**SWITCH
FOR FLOOR LAMPS
120 V
3 A**

**SPRING CLAMPS
(push-in insertion)
18 AWG**

UL 61058-1

cULus



• Table of the cables connectable to the switch:

Insulation	Shape	Sections	Temperature	Type	cod./page
PVC	flat	2 x 18 AWG	T105°C	SPT-2	YD28- (pag. 9095)

Note: on customer's request, it is possible to supply the switch connected with plugs and cables.

- Polycarbonate body.
Raw or nickel-plated phosphorous bronze or brass contacts.
Spring clamps (push-in insertion).

• Table of the available colours:

T = transparent

B = white

N = black

- Other colours on request.

