

EDISON SCREW LAMPHOLDERS

P01R



Note: to tighten the clamps screws, use a screwdriver with a slot max diameter 3,5 mm.

- Porcelain body.
Cap-side-contact in nickel-plated brass.
Central contact in nickel-plated brass.
Pressure spring in normalized stainless steel.
Brass Clamps with slot screws not completely tightened.
- Weight of the lampholder in standard execution (with cables L = 25 cm): 35 g.

- Instructions to fix the lampholder on structures.



■ Suggested minimum dimension for cables passage (if necessary)

- Fixing of the lampholder using the holes diameter 3,5 mm with center distance 18 mm (if M3 screws are used, the head diameter should be less than 4,8 mm).

Lampholder:	E12
Maximum power:	75 W
Rated voltage:	125 V
Working temperature:	T 250°C
Type of clamps for cables connection:	SCREW CLAMPS
Clamps connecting capacity:	18 AWG
In conformity to the standards:	UL 496
Approval marks:	cULus

Attention: connect the line cable, usually the black one, to the central contact clamp and the neutral cable, usually the white one, to the lateral contact clamp.

Single-conductor connecting cables, polarized white and black, which could be connected to the lampholder (if flexible, arranged with crimped end-terminals l= 6 mm or stripped and tinned 6 mm; if solid, stripped 6 mm)

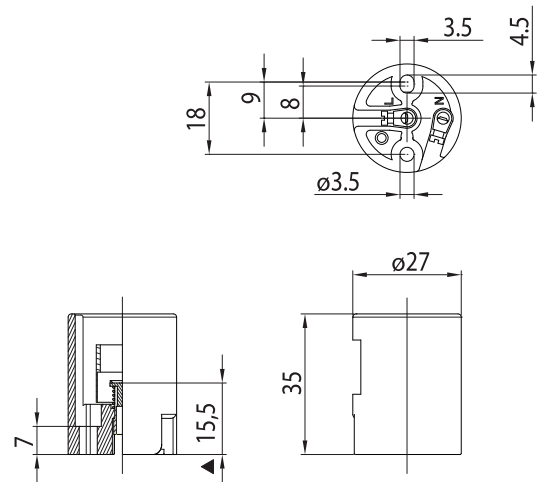
Insulation	T in °C	Conduct.	Available voltages and AWG		
			300V	600V	18AWG
Silicone <i>Single insulation</i>	200	CuSn		•	•
Silicone+glass-braid <i>Single insulation</i>	200	CuSn		•	•
FEP <i>Single insulation</i>	200	CuNi	•	•	•
FEP+FEP <i>Double insulation</i>	200	CuNi	•		•
PTFE <i>Single insulation</i>	250	CuNi	•	•	•
PTFE+PFA <i>Double insulation</i>	250	CuNi	•		•

- The accessories available are listed at the end of this section.



P01R

2006



▲ Central contact distance

