

EDISON SCREW LAMPHOLDERS

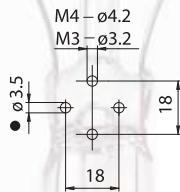
P10M

Note: to tighten the clamps screws, use a screwdriver with a slot max diameter 3,5 mm.

This lampholder is not manufactured by E.M.C. Colosio.

- Porcelain body.
Phosphorous bronze contacts.
Central contact pressure spring in normalized stainless steel.
Brass clamps with slot screws not completely tightened.
Cap in nickel-plated iron.
- Weight: 60 g.

- Instructions to fix the lampholder on structures.



■ Suggested minimum dimension for cables passage (if necessary)

- Fixing of the lampholder using the holes diameter 3,2 mm with center distance 18 mm.

Lampholder:

E26

Maximum power:

660 W

Rated voltage:

250 V

Working temperature:

T 250°C

Type of clamps for cables connection:

SCREW CLAMPS

Clamps connecting capacity:

18 AWG

In conformity to the standards:

UL 496

CSA 22.2 N.43

Approval marks:

cURus

Attention: connect the line cable, usually the black one, to the central contact clamp and the neutral cable, usually the white one, to the lateral contact clamp.

Single-conductor flexible connecting cables polarized white and black, which could be connected to the lampholder (arranged with crimped end-terminals or with stripping 6 mm)

Insulation	T in °C	Conduct.	Available voltages and AWG		
			300V	600V	18AWG
Silicone <i>Single insulation</i>	200	CuSn		•	•
Silicone+glass-braid <i>Single insulation</i>	200	CuSn		•	•
FEP <i>Single insulation</i>	200	CuNi	•	•	•
FEP+FEP <i>Double insulation</i>	200	CuNi	•		•
PTFE <i>Single insulation</i>	250	CuNi	•	•	•
PTFE+PFA <i>Double insulation</i>	250	CuNi	•		•



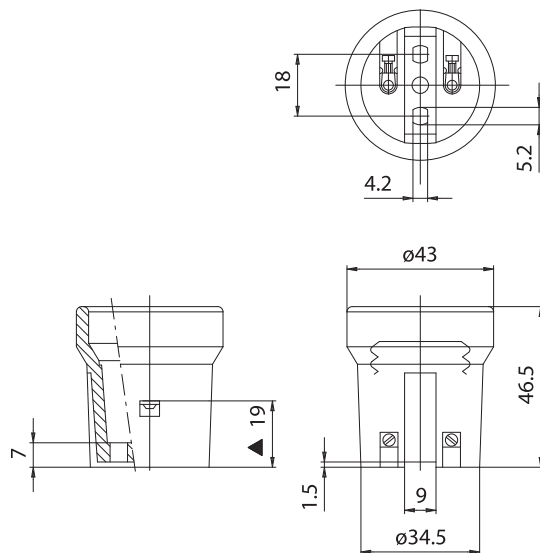
P10

CE

Lampholder:

Rated voltage:
Rated current:
Working temperature:
Type of clamps for
cables connection:
Clamps connecting capacity:
Overvoltage category:
Protection degree (IP):
In conformity to the standards:
In conformity to the requirements
of the directive:

E27
500 V
4 A
T 270°C
SCREW CLAMPS
0,50 ÷ 1,00 mm²
III
IP20
EN 60238
2014/35/EU
ENEC 03



- The accessories available are listed at the end of this section.

▲ Central contact distance



EDISON SCREW LAMPHOLDERS

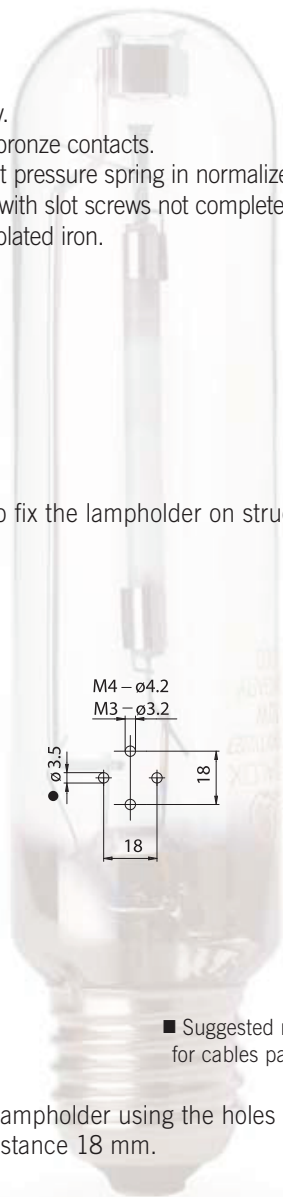
Note: to tighten the clamps screws, use a screwdriver with a slot max diameter 3,5 mm.

This lampholder is not manufactured by E.M.C. Colosio.

- Porcelain body.
Phosphorous bronze contacts.
Central contact pressure spring in normalized stainless steel.
Brass clamps with slot screws not completely tightened.
Cap in nickel-plated iron.

- Weight: 60 g.

- Instructions to fix the lampholder on structures.



■ Suggested minimum dimension for cables passage (if necessary)

- Fixing of the lampholder using the holes diameter 3,2 mm with center distance 18 mm.



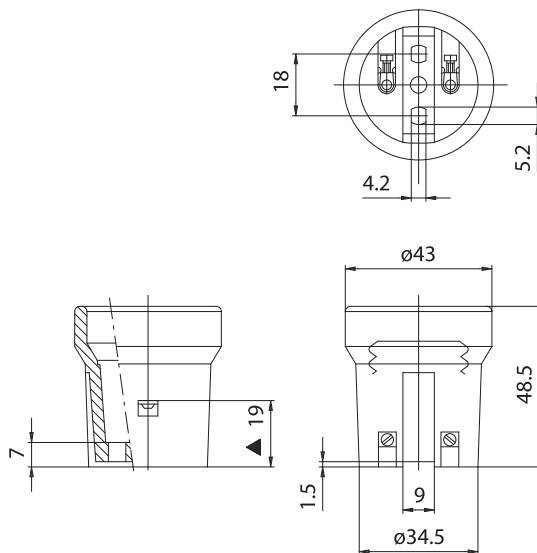
P10 750V



Lampholder:	E27
Rated voltage:	500 V
Impulse voltage:	5 kV
Rated current:	4 A
Working temperature:	T 210°C
Type of clamps for cables connection:	SCREW CLAMPS
Clamps connecting capacity:	0,50 ÷ 1,00 mm²
Overvoltage category:	III
Protection degree (IP):	IP20
In conformity to the standards:	EN 60238
In conformity to the requirements of the directive:	2014/35/EU
Approval marks:	ENEC 10



P10 750VA: P10 750V lampholder with anti-vibrations device.



- The accessories available are listed at the end of this section.

▲ Central contact distance

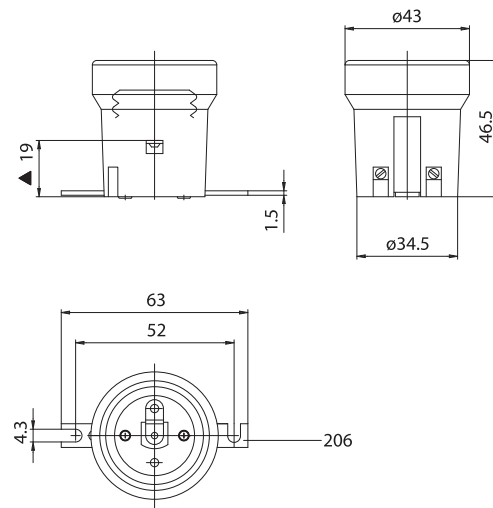
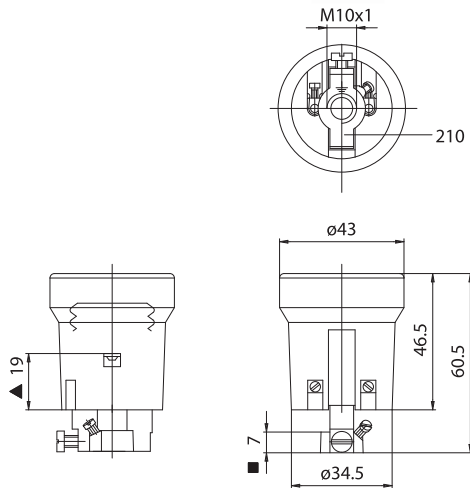


P10H

CE

P10D

CE



▲ Central contact distance ■ Depth of thread

▲ Central contact distance

P10H: P10 lampholder assembled with adapter in white-zinc-plated zamak 16 mm height, with threaded hole M10 x1, with screws for nipple-block and for the ground cable (art. 210).

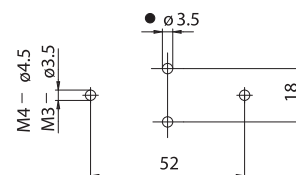
P10D: P10 lampholder assembled with white-zinc-plated iron fixing plate bracket, with slotted holes diameter 4,3 mm with center distance 52 mm (art. 216).

P10MH: lampholder as P10H with E26 cap.

P10MD: lampholder as P10D with E26 cap.

- Weight: 80 g.

- Weight: 65 g.
- Instructions to fix the lampholder on structures.



● Suggested minimum dimension for cables passage (if necessary)

- Fixing of the lampholder by M10 x1 nipples.

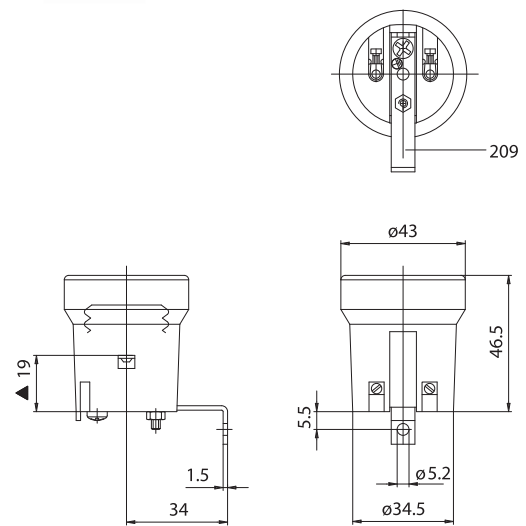
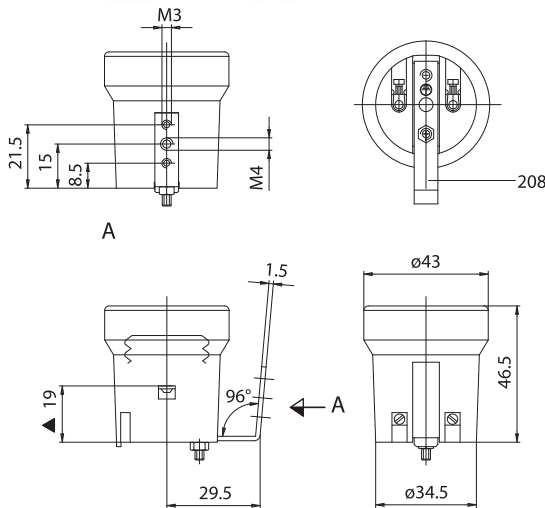
- Fixing of the lampholder using M3 screws, to be inserted in the slotted holes with center distance 52 mm.

P10V

CE

P10B

CE



▲ Central contact distance

P10V: P10 lampholder assembled with 96° white-zinc-plated iron fixing bracket, with two threaded holes M3 and one M4 (art. 208).

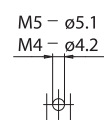
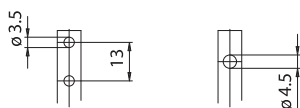
P10B: P10 lampholder assembled with 90° white-zinc-plated iron fixing bracket, with hole diameter 5,2 mm, and screw for the ground cable (art. 209).

P10MV: lampholder as P10V with E26 cap.

P10MB: lampholder as P10B with E26 cap.

- Weight: 70 g.
- Instructions to fix the lampholder on structures.

- Weight: 70 g.
- Instructions to fix the lampholder on structures.



- Fixing of the lampholder by screws, to be tightened on the chosen threaded holes.

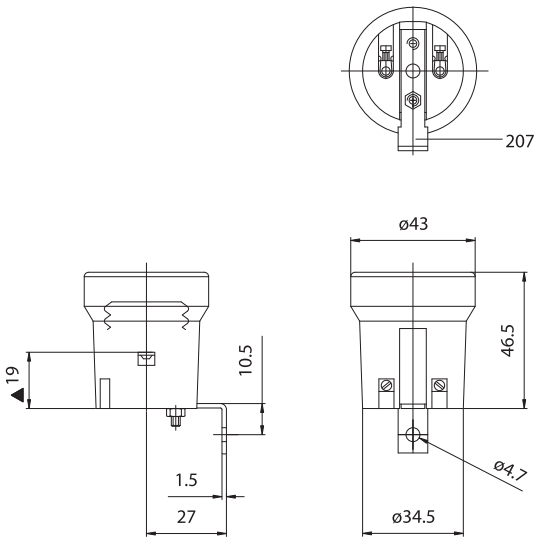
- Fixing of the lampholder by screws M4, to be inserted in the bracket hole.

P10C

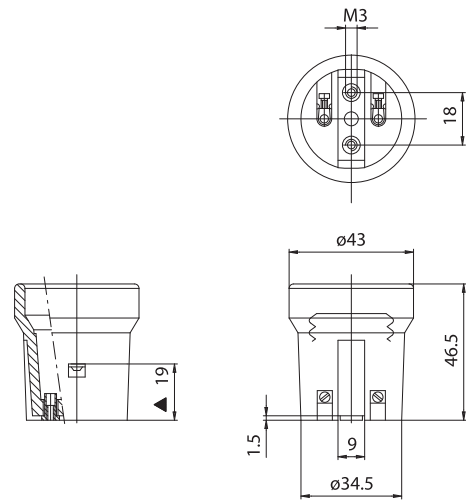
CE

P10F

CE



▲ Central contact distance



▲ Central contact distance

P10C: P10 lampholder assembled with 90° white-zinc-plated iron fixing bracket, with hole diameter 4,2 mm (art. 207).

- Weight: 65 g.

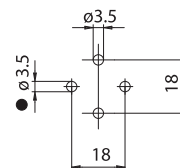
P10MC: lampholder as P10C with E26 cap.

- Instructions to fix the lampholder on structures.

P10F: P10 lampholder assembled with brass threaded bush M3 inserted in the fixing holes with center distance 18 mm (useful to fix the lampholder from the back side).

P10MF: lampholder as P10F with E26 cap.

- Weight: 60 g.
- Instructions to fix the lampholder on structures.



● Suggested minimum dimension for cables passage (if necessary)

- Fixing of the lampholder by screws M4, to be inserted in the bracket slot.