

# P15-

1984



**Lampholder:**

**E27**

Rated voltage:

**500 V**

Impulse voltage:

**5 kV**

Rated current:

**4 A**

Working temperature:

**T 210°C**

Type of clamps for cables connection:

**SCREW CLAMPS**

Clamps connecting capacity:

**0,50 ÷ 1,00 mm<sup>2</sup>**

Overvoltage category:

**III**

Protection degree (IP):

**IP20**

In conformity to the standards:

**EN 60238**

In conformity to the requirements of the directive:

**2014/35/EU**

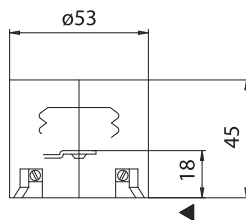
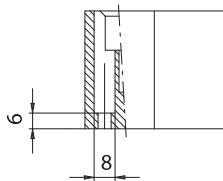
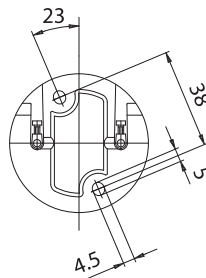


Approval marks:

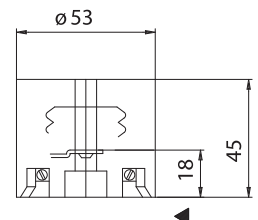
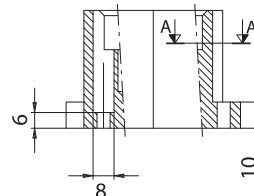
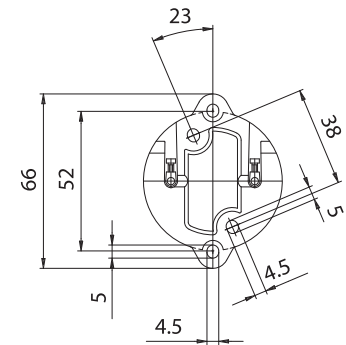
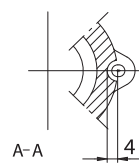
**P15A:** lampholder with fixing center distance 52 mm and 38 mm.

**P15:** lampholder with fixing center distance 38 mm.

**P15**



**P15A**



- The accessories available are listed at the end of this section.

▲ Central contact distance



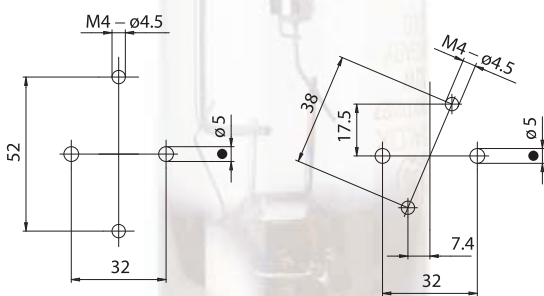
# EDISON SCREW LAMPHOLDERS

Note: to tighten the clamps screws, use a screwdriver with a slot max diameter 3,5 mm.

- Porcelain body.  
Nickel-plated copper contacts.  
Central contact pressure spring in normalized stainless steel.  
Brass clamps with slot screw not completely tightened.  
Cap in nickel-plated iron.

- Weight: 140 g.

- Instructions to fix the lampholder on structures.



■ Suggested minimum dimension for cables passage (if necessary)

- Fixing of the lampholder using the holes diameter 4,5 mm with center distance 52 mm or 38 mm.

