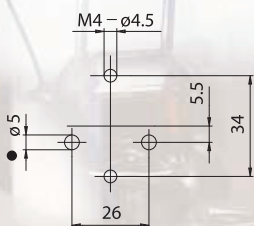


# EDISON SCREW LAMPHOLDERS

*Note: to tighten the clamps screws, use a screwdriver with a slot max diameter 4 mm.*

- Porcelain body.  
Cap-side contact in nickel-plated copper.  
Central contact in nickel-plated copper.  
Central contact pressure spring in normalized stainless steel.  
Brass clamps with slot screw not completely tightened.
- Weight: 235 g.

- Instructions to fix the lampholder on structures.



■ Suggested minimum dimension for cables passage (if necessary)

- Fixing of the lampholder using the holes diameter 4,2 mm with center distance 34 mm.



# P25



## Lampholder:

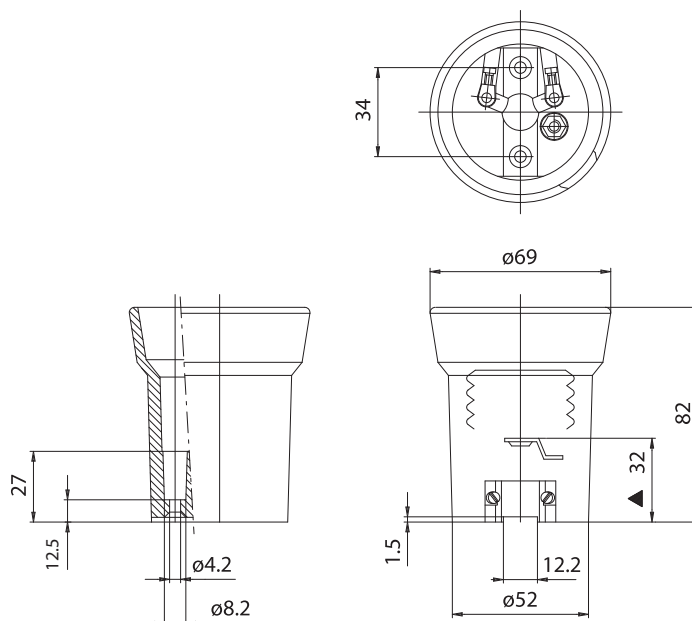
Rated voltage:  
Impulse voltage:  
Rated current:  
Working temperature:  
Type of clamps for  
cables connection:  
Clamps connecting capacity:  
Overvoltage category:  
Protection degree (IP):  
In conformity to the standards:  
In conformity to the requirements  
of the directive:

**E40**  
**500 V**  
**5 kV**  
**16 A**  
**T 300°C**  
**SCREW CLAMPS**  
**1,50 ÷ 4,00 mm<sup>2</sup>**  
**III**  
**IP20**  
**EN 60238**  
**2014/35/EU**

Approval marks:



**P25A:** P25 lampholder with anti-vibrations device.



- The accessories available are listed at the end of this section.

▲ Central contact distance

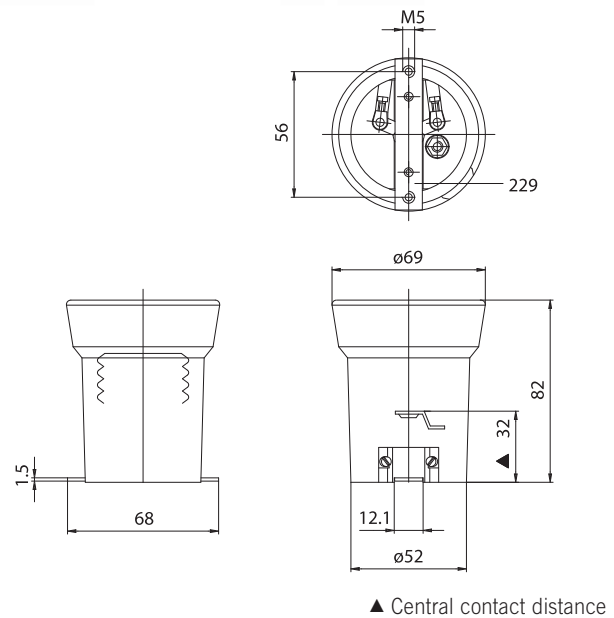
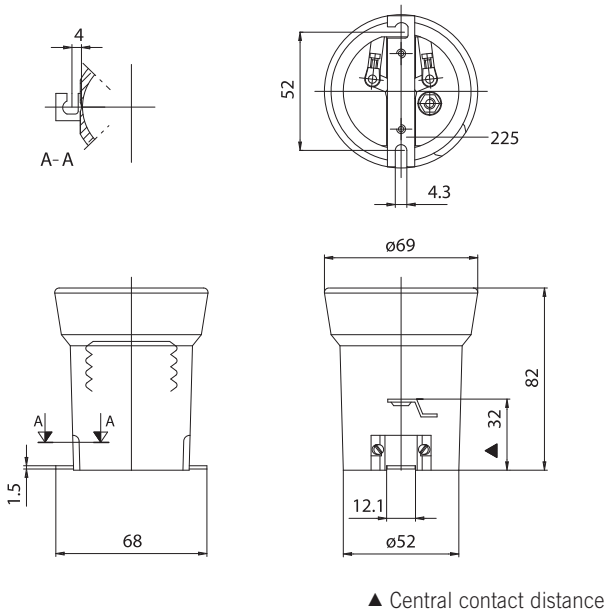


# P25D

CE

# P25G

CE



**P25D:** P25 lampholder assembled with white zinc-plated iron fixing plate bracket, with slotted holes diameter 4,2 mm with center distance 52 mm (art. 225).

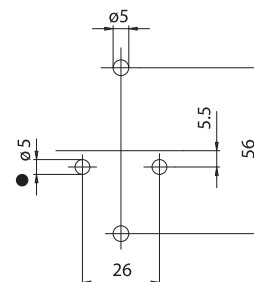
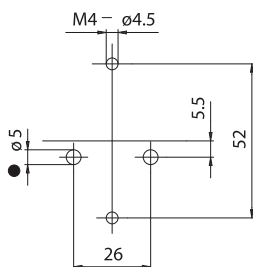
**P25G:** P25 lampholder assembled with white-zinc-plated iron fixing plate bracket, with threaded holes M5 with center distance 56,5 mm (art. 229).

**P25AD:** lampholder as P25D with anti-vibrations device.

**P25AG:** lampholder as P25G with anti-vibrations device.

- Weight: 245 g.
- Instructions to fix the lampholder on structures.

- Weight: 240 g.
- Instructions to fix the lampholder on structures.

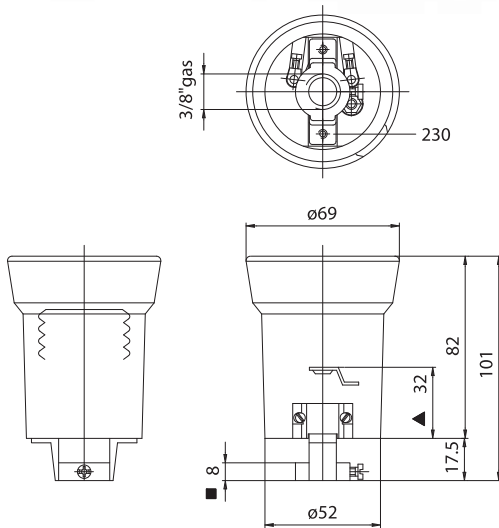


- Suggested minimum dimension for cables passage (if necessary)
- Fixing of the lampholder using M4 screws, to be inserted in the slotted holes with center distance 52 mm.

- Suggested minimum dimension for cables passage (if necessary)
- Fixing of the lampholder using M5 screws, to be inserted in the threaded holes with center distance 56,5 mm.

# P25H

CE



▲ Central contact distance ■ Depth of thread

**P25H:** P25 lampholder assembled with adapter in white zinc-plated aluminium, 20 mm height, with threaded hole 3/8", with screws for nipple-block.

**P25AH:** lampholder as P25H with anti-vibrations device.

- Weight: 250 g.

- Fixing of the lampholder by 3/8" nipples.