

BAYONET CAP LAMPHOLDERS

P37M



Note: to tighten the clamps screws, use a screwdriver with a slot max. diameter 3,5 mm.

Lampholder:

B15d

Maximum power:
Rated voltage:
Working temperature:
Type of clamps for cable connection:
Clamps connecting capacity:
In conformity to the standards:

500 W
125 V
T 250°C

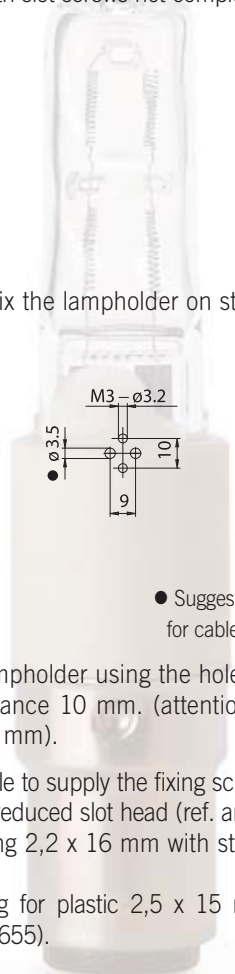
SCREW CLAMPS
0,50 ÷ 1,00 mm²
UL 496
CSA 22.2 N.43

Approval marks:

cURus

- Steatite body.
Contact in nickel-plated brass.
Contacts pressure springs in normalized stainless steel.
Brass clamps with slot screws not completely tightened.

- Weight: 30 g.



- Instructions to fix the lampholder on structures.

● Suggested minimum dimension for cables passage (if necessary)

- Fixing of the lampholder using the holes diameter 3,2 mm with center distance 10 mm. (attention: max diameter of screw head 4,5 mm).
- Note: it is possible to supply the fixing screws:
 - M3 x 16 with reduced slot head (ref. art. 502)
 - Thread-forming 2,2 x 16 mm with star-slotted head (ref. art. 514).
 - Thread-forming for plastic 2,5 x 15 mm with star-slotted head (ref. art. 655).

Single-conductor flexible connecting cables, black and white polarized, which could be connected to the lampholder (arranged with crimped end-terminals or with stripping 6 mm):

Insulation	T in °C	Conduct.	Available voltages and AWG		
			300V	600V	18AWG
Silicone <i>Single insulation</i>	200	CuSn		•	•
Silicone+glass-braid <i>Single insulation</i>	200	CuSn		•	•
FEP <i>Single insulation</i>	200	CuNi	•	•	•
FEP+FEP <i>Double insulation</i>	200	CuNi	•		•
PTFE <i>Single insulation</i>	250	CuNi	•	•	•
PTFE+PFA <i>Double insulation</i>	250	CuNi	•		•



P37

1987



Lampholder:

B15d

Rated voltage:

250 V

Rated current:

8 A

Working temperature:

T 250°C

Type of clamps for
cables connection:

SCREW CLAMPS

Clamps connecting capacity:

0,50 ÷ 1,00 mm²

Overvoltage category:

III

Protection degree (IP):

IP20

In conformity to the standards:

EN 61184

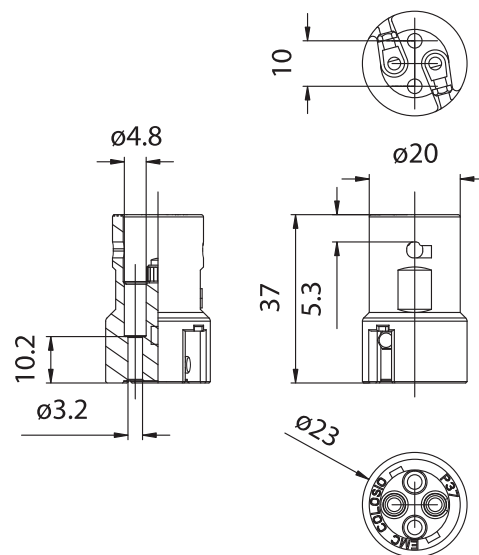
In conformity to the requirements
of the directive:

2014/35/EU

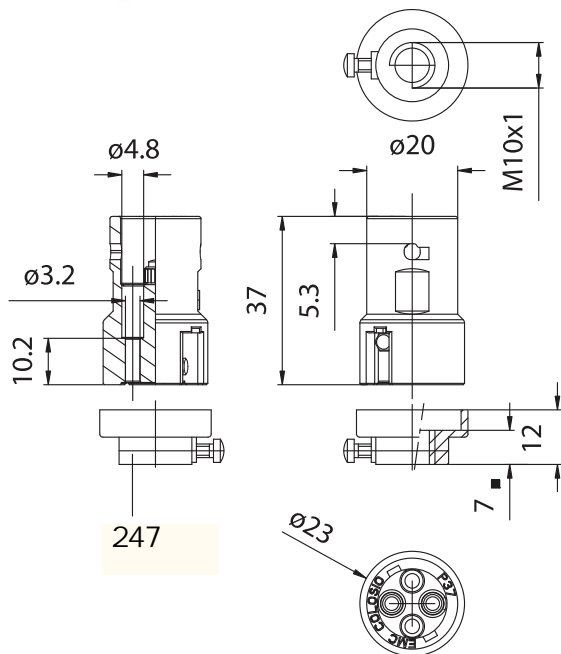
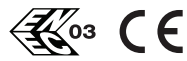
Approval marks:

ENEC 03

CQC



P37H



● Depth of thread

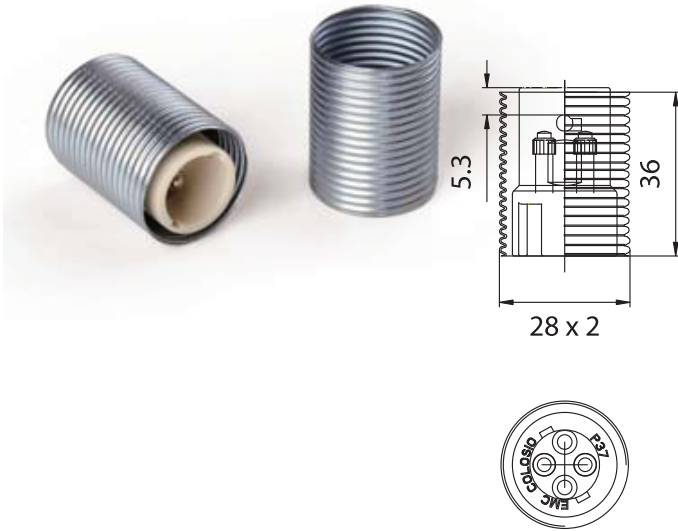
P37H: lampholder P37 equipped with adapter in black PA66 20% G.F. T140°C, 12 mm height, with threaded hole M10 x1 with screw for nipple-block (ref. art. 247).

Note: this code is supplied with the adapter unassembled on the lampholder (included the two thread-forming screws for plastic 2,5 x 15 mm with star-slotted head - ref. art. 655).

- Weight: 35 g.

- Fixing of the lampholder by M10 x1 nipples.

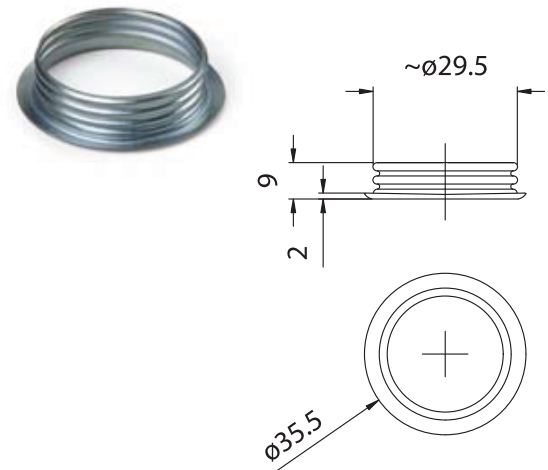
428/36



428/36: case, in white zinc-plated iron, with round thread 28 x2 mm, height 36 mm.

- Weight: 8 g.

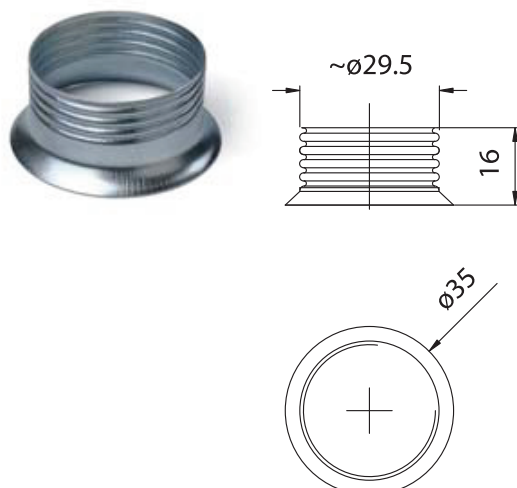
428FV/9



428FV/9: ring-nut, in white zinc-plated iron, with plain ledge with round thread 28 x2 mm, height 9 mm, for case 428/36.

- Weight: 2 g.

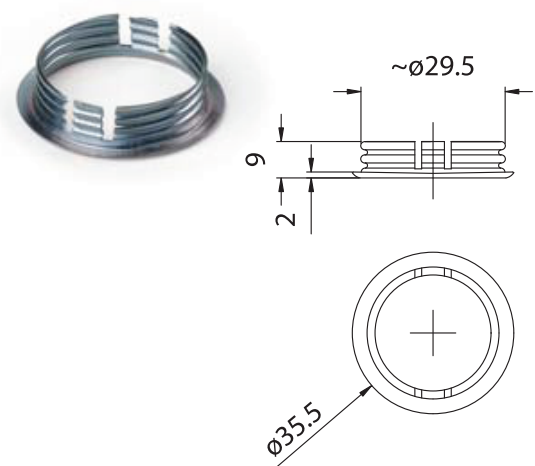
428F/16



428F/16: ring-nut, in white zinc-plated iron, with round thread 28 x2 mm, height 16 mm, for case 428/36.

- Weight: 2 g.

428FV/9T6



428FV/9T6: ring-nut, in white zinc-plated iron, with plain ledge with round thread 28 x2 mm, height 9 mm, with rifts, for case 428/36.

- Weight: 2 g.

Note: this ring-nut works properly when inserted in holes diameter $29,5 \pm 0,2$ mm.