

FOR VERY LOW TENSION 12 - 24V

P72B

Lampholder: G6.35 - GY6.35

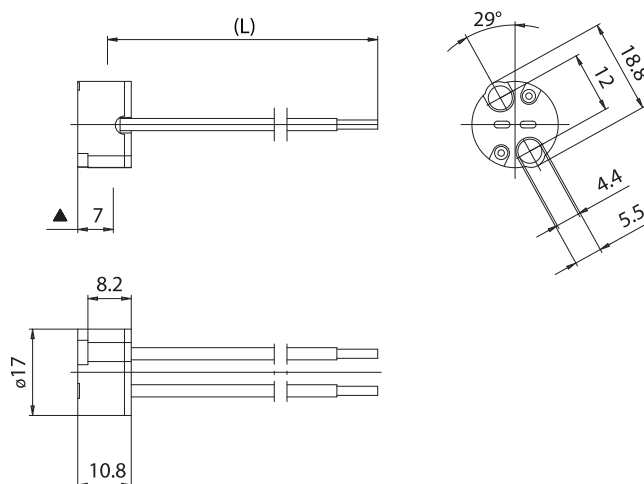
Rated voltage: **24 V**
 Rated current: **8 A**
 Working temperature: **T 210°C**
 Connected cables working temperature: **T 90°÷ 250°C**
 Protection grade: **IP20**
 In conformity to the standards: **EN 60838-1**

Approval marks:



Single-conductor flexible connecting cables crimped to the lampholder:

Insulation	T in °C	Conduct.	Available sections in mm ²			
			0,50	0,75	1,00	1,50
Silicone <i>Single insulation</i>	180	CuSn	•	•	•	
Silicone+glass-braid <i>Single insulation</i>	180	CuSn	•	•		
FEP <i>Single insulation</i>	180	CuSn	•	•	•	•
PTFE <i>Single insulation</i>	180	CuSn	•	•	•	•
PTFE <i>Single insulation</i>	250	CuNi	•	•	•	•
PFA <i>Single insulation</i>	260	CuNi	•	•	•	



▲ Lamp contacts reference plane



LAMPHOLDER FOR INCANDESCENT HALOGEN LAMPS

P72B



Current carrying capacity of cables:
 - 6A for cables section 0,50 mm² or 20 AWG
 - 8A for cables section 0,75 mm² or 18 AWG

Lampholder: G6.35 - GY6.35

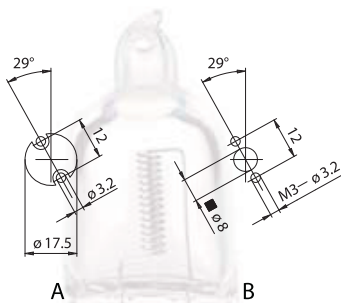
Rated current: 8 A
 Rated voltage: 24 V ★
 Working temperature: T 210°C
 Connected cables working temperature: T 105°÷ 250°C
 In conformity to the standards: UL 496
 CSA 22.2 N.43

Approval marks: cURus

- Steatite body.
 Double contacts in special alloy.
 Back closing plate in PPS.
- Weight of the lampholder in standard execution (with cables L = 15 cm): 5 g.

Single-conductor flexible connecting cables crimped to the lampholder:

- Indications to fix the lampholder on structures.



A - Front fixing B - Back fixing

■ Suggested minimum dimension for cables passage

- Lampholder fixing by threaded holes diameter 3,8 mm, with center distance 12 mm (if M3 screws are used, the diameter of the screw head must be less than 5,5 mm).

Note: it is possible to supply white zinc-plated iron screws with cross head, M3 x 12 (ref. art. 523).

Insulation	T in °C	Conduct.	Available voltage and AWG		
			300V	600V	18AWG
Silicone Single insulation	200	CuSn		•	•
FEP Single insulation	200	CuNi	•	•	•
PTFE Single insulation	250	CuNi	•	•	•

The UL version can also be used by rated voltage 120V, maximum power 100W.

In this case the distance between the metal parts, which are not insulated or of different polarizations, must be at least 1,2 mm and the lighting fixture must be approved by Underwriters Laboratories Inc. (UL).

