

# FOR VERY LOW TENSION 12 - 24V

## P77-

1990

**Clamp lampholder  
for lamp with base:**

**G4 - GZ4 - G5.3 - GX5.3 - GU5.3  
G6.35 - GY6.35 - GZ6.35**

Rated voltage:

**24 V**

Rated current:

**10 A**

Working temperature:

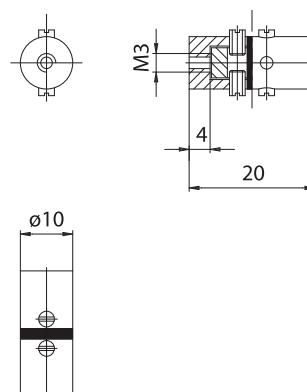
**T 240°C**



**P77:** lampholder P77 with contact -body in nickel-plated brass.

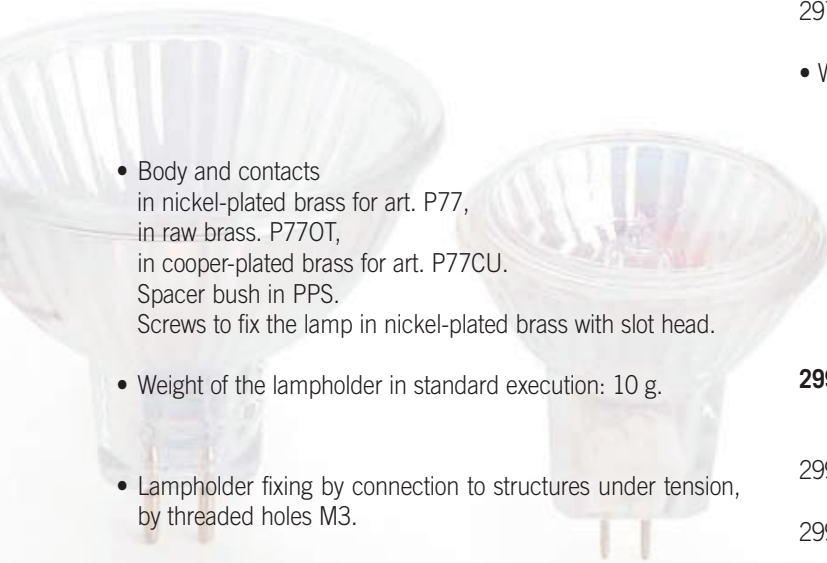
**P770T:** lampholder P77 with contact -body in raw brass.

**P77CU:** lampholder P77 with contact -body in copper-plated brass.



# LAMPHOLDER FOR INCANDESCENT HALOGEN LAMPS

**Note: to screw the clamps screws use a screwdriver with slot max. diameter 2 mm.**



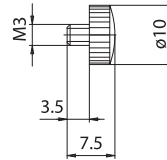
- Body and contacts in nickel-plated brass for art. P77, in raw brass. P77OT, in copper-plated brass for art. P77CU. Spacer bush in PPS. Screws to fix the lamp in nickel-plated brass with slot head.
- Weight of the lampholder in standard execution: 10 g.
- Lampholder fixing by connection to structures under tension, by threaded holes M3.

**297:** nickel-plated brass fixing screw for M3 x 3,5 mm, with knurled knob, without point.

297OT: article 297 in raw brass.

297CU: article 297 in copper-plated brass.

- Weight: 3 g.

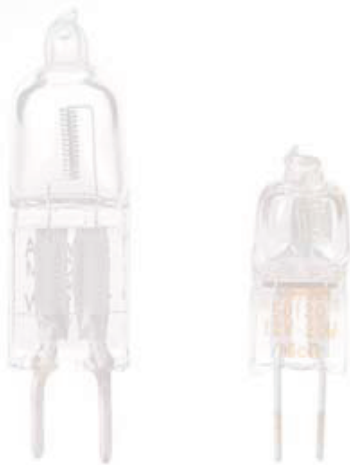
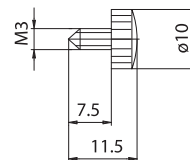


**299:** fixing screw, for P77, in nickel-plated brass, M3 x 7,5 mm, with point to cut the power cable.

299OT: article 299 in raw brass.

299CU: article 299 in copper-plated brass.

- Weight: 3 g.



**294:** adapter, in nickel-plated brass, for the connection to the power.

294OT: adapter, in raw brass.

294CU: adapter, in copper-plated brass.

- Weight: 4 g.

